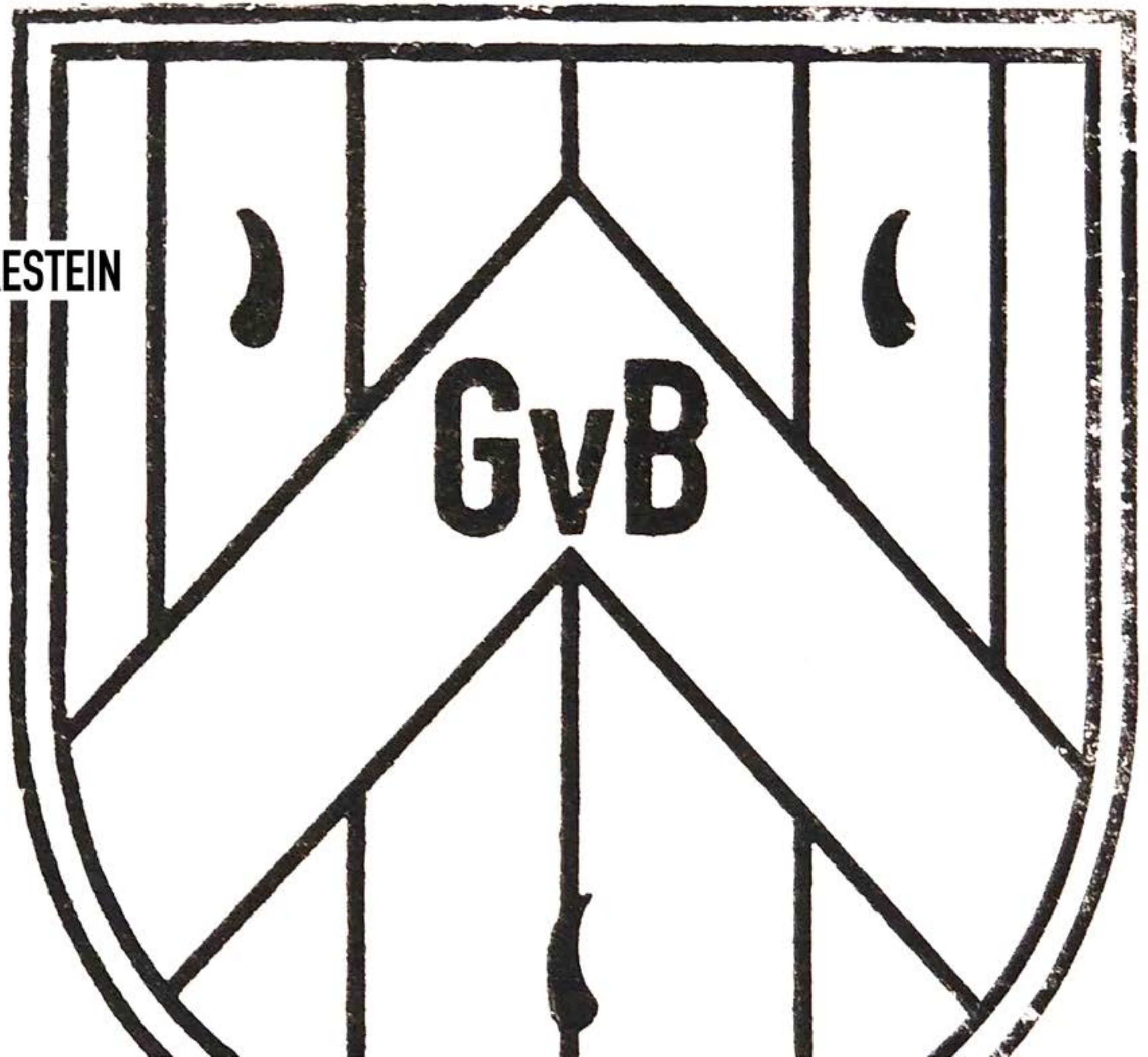
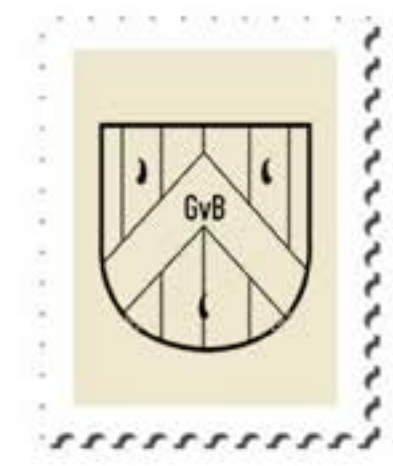


AITANA GIEBELS van BEKESTEIN



This collection is about creating a new heritage brand that does not limit itself to one culture or nationality.

Inspired by my own english and spanish upbringing I intend to open up this idea of national identity for the quintessentially cosmopolitan woman.



AITANA

GIEBELS van BEKESTEIN

Opá's Military Uniform

Naranjos + Flores Sevilla.

Savile Row

Lace

Tea & Biscuits.

Manor de Manila

Twin sets/Suits.

Structure



Hunting/countryside

Chaquetilla/
Traje de Luces.

↑
Yaya ↑
Abuelo

China set

Crochet/
Ganchillo

Ruffles/
Fiesta de abril

Architecture
Spain/UK → Historic
culture



reference
crochet
as a frill?

Alternative ways to interpret frills





Using knots to make different shapes



Fringe



Frill Pattern 1

| | | | | | | | | | |
|---|---|---|---|---|---|---|---|---|---|
| 1 | ○ | ○ | ○ | ○ | ○ | ○ | ○ | ○ | ○ |
| 2 | + | + | + | + | + | + | + | + | + |
| 3 | + | + | + | + | + | + | + | + | + |
| 4 | + | + | + | + | + | + | + | + | + |
| 5 | + | + | + | + | + | + | + | + | + |
| 6 | ⌊ | ⌊ | ⌊ | ⌊ | ⌊ | ⌊ | ⌊ | ⌊ | ⌊ |
| 7 | ⌊ | ⌊ | ⌊ | ⌊ | ⌊ | ⌊ | ⌊ | ⌊ | ⌊ |
| 8 | ⌊ | ⌊ | ⌊ | ⌊ | ⌊ | ⌊ | ⌊ | ⌊ | ⌊ |

Volume Frill Pattern 2

| | | | | | | | | | |
|---|---|---|---|---|---|---|---|---|---|
| 1 | ○ | ○ | ○ | ○ | ○ | ○ | ○ | ○ | ○ |
| 2 | + | + | + | + | + | + | + | + | + |
| 3 | + | + | + | + | + | + | + | + | + |
| 4 | + | + | + | + | + | + | + | + | + |
| 5 | ⌋ | ⌋ | ⌋ | ⌋ | ⌋ | ⌋ | ⌋ | ⌋ | ⌋ |
| 6 | ⌋ | ⌋ | ⌋ | ⌋ | ⌋ | ⌋ | ⌋ | ⌋ | ⌋ |
| 7 | ⌋ | ⌋ | ⌋ | ⌋ | ⌋ | ⌋ | ⌋ | ⌋ | ⌋ |
| 8 | + | + | + | + | + | + | + | + | + |

Waist Placket Pattern

| | | | | | | | | | |
|----|---|---|---|---|---|---|---|---|---|
| 1 | ○ | ○ | ○ | ○ | ○ | ○ | ○ | ○ | ○ |
| 2 | + | + | + | + | + | + | + | + | + |
| 3 | + | + | + | + | + | + | + | + | + |
| 4 | + | + | + | + | + | + | + | + | + |
| 5 | + | + | + | + | + | + | + | + | + |
| 6 | + | + | + | + | + | + | + | + | + |
| 7 | + | + | + | + | + | + | + | + | + |
| 8 | + | + | + | + | + | + | + | + | + |
| 9 | + | + | + | + | + | + | + | + | + |
| 10 | + | + | + | + | + | + | + | + | + |
| 11 | + | + | + | + | + | + | + | + | + |
| 12 | + | + | + | + | + | + | + | + | + |
| 13 | + | + | + | + | + | + | + | + | + |
| 14 | + | + | + | + | + | + | + | + | + |
| 15 | + | + | + | + | + | + | + | + | + |
| 16 | + | + | + | + | + | + | + | + | + |
| 17 | + | + | + | + | + | + | + | + | + |
| 18 | ○ | ○ | ○ | ○ | ○ | ○ | ○ | ○ | ○ |

Voliminous Frill Pattern 2

Waist Placket Pattern + X2 Crochet Frill Pattern 1



Hemp Tweed Chunky Yarn Pattern 1x2 layered

*Horizontal length of pattern differs



Double stitching centre

Folded top stitch



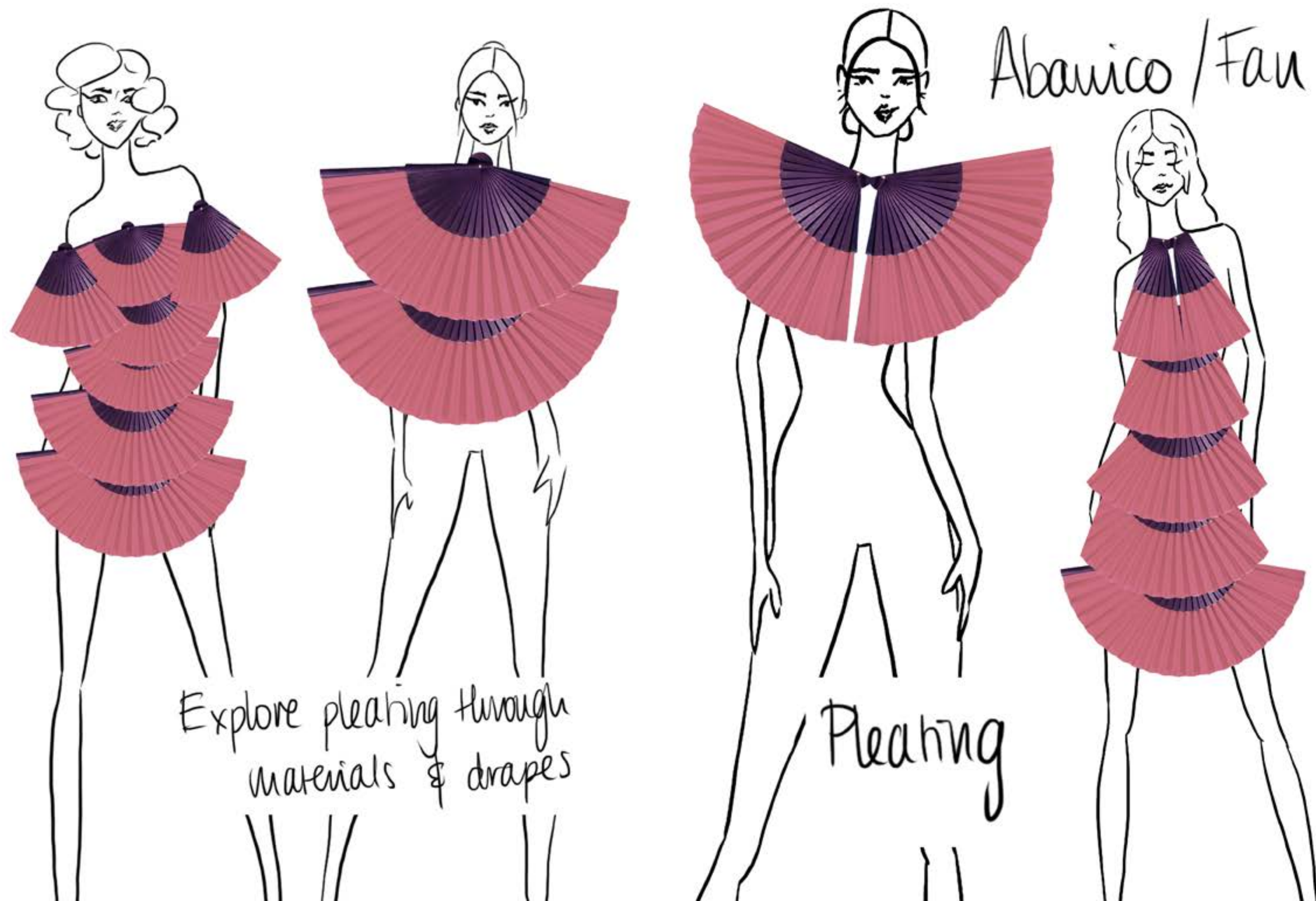
Top stitch



Mustin pleats are very light (a lot of movement) don't hold a lot of shape



* Application & function of pleates needs to be resolved through more relevant materiality.



Muslin

*Shape: (rectangle) opens nicely in areas creating curves - try curved patterns to drape

Muslin too soft / light

enhancement of waist = flattening (belt?)

interfaced wool heavy no stiffness - loss of shape / flops



Interfaced Wool



Cotton corduroy



Cotton waffle



Interfaced wool



Double fused wool



Double fused wool



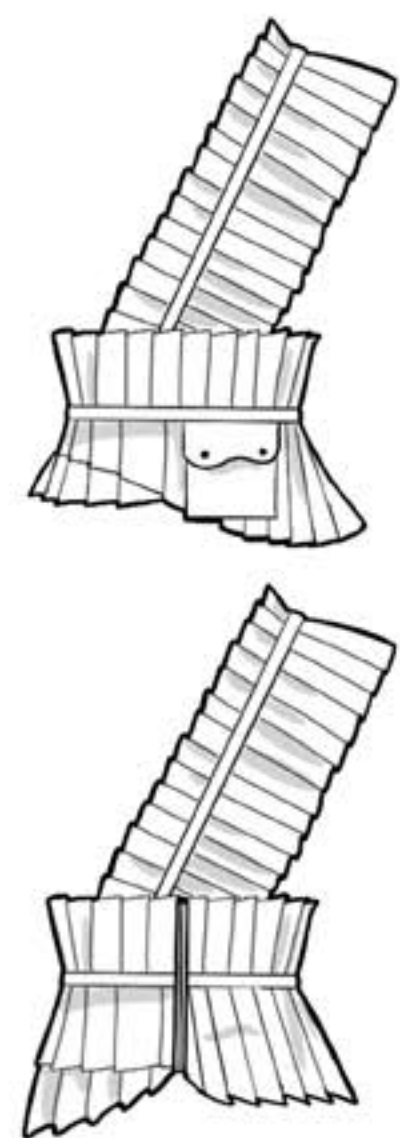
Double fused satin/wool blend



Double Fused Wool

- Very sturdy
- Holds shape
- Heavy





centre stitch allows pleats to stay in place & open up according to direction of pattern



Creates a lot of bulk

*make with double fused heavy fabric

Too long



sturdy = holds shape



play with more volume drapes

swatches



add crochet onto sketches



Muslin



Scuba Crepe



Boiled Wool



An exploration of shoulder/sleeve pleats



Shape/control/movement





Digital Drawing - Colour Inspo



Initial Swatches

Patterned Print Design Ideas

Chaquetilla

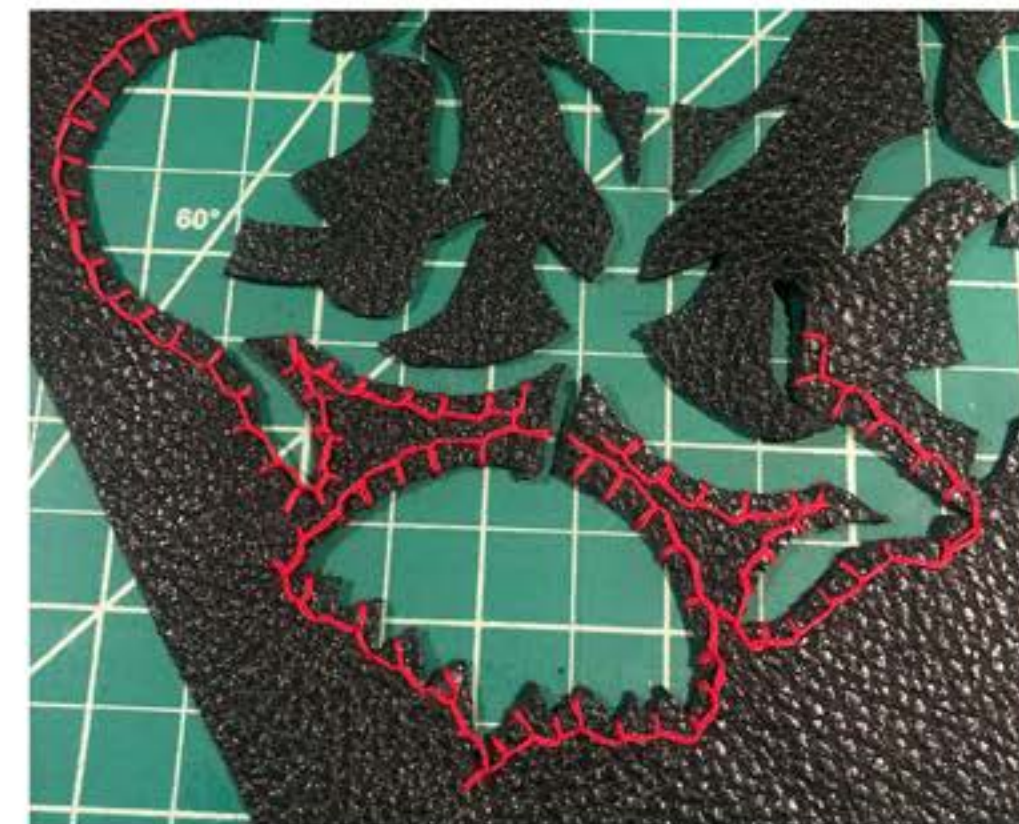


White Charcoal & artist pen on mixed paper

Mantón de Manila



Digital Drawing & Digital Pattern

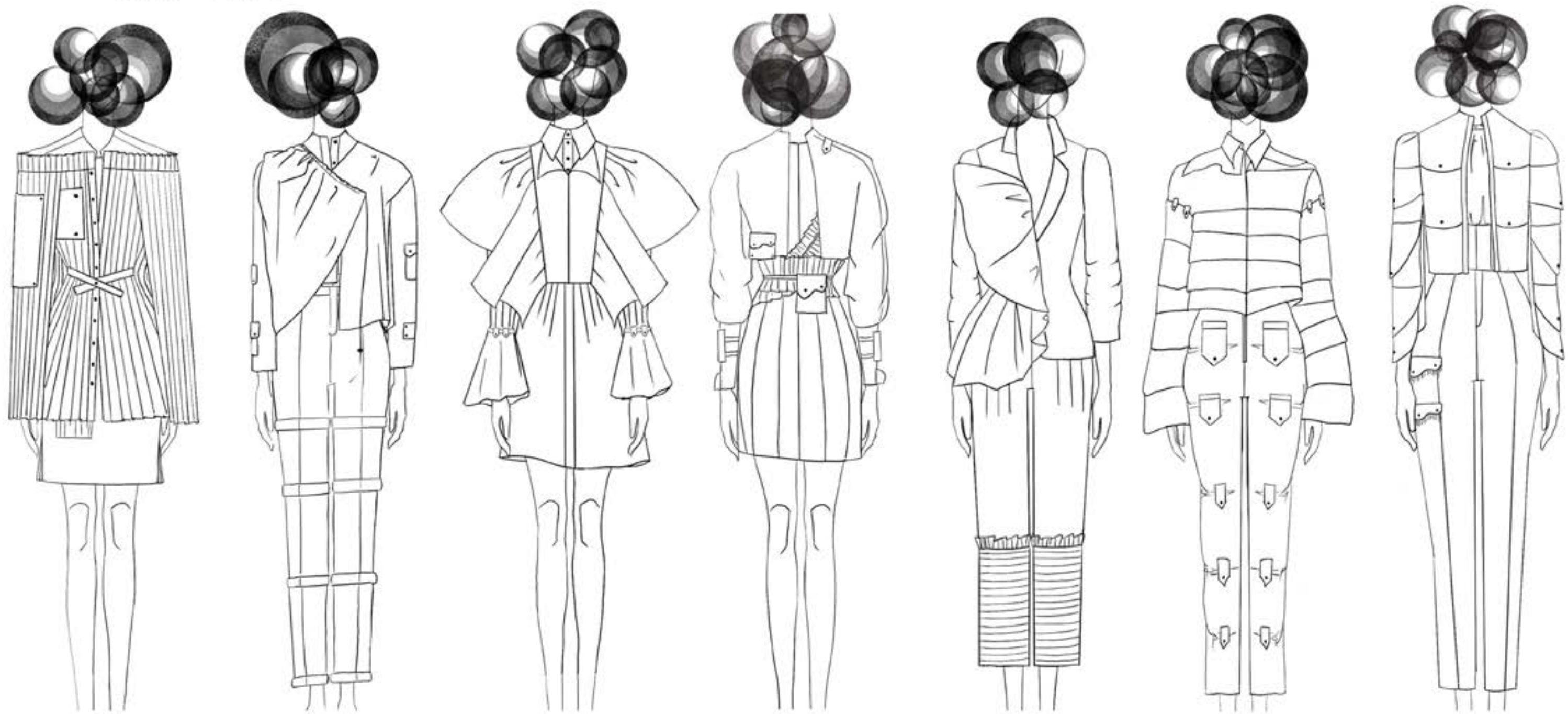


Handcut leather



Laser-cut Leather on Merino Wool

Needs a long/midi dress
one with more volume



Test muslins & see if pieces
should be moved around
between looks

*line up will have changes





Silk embroidery tulle



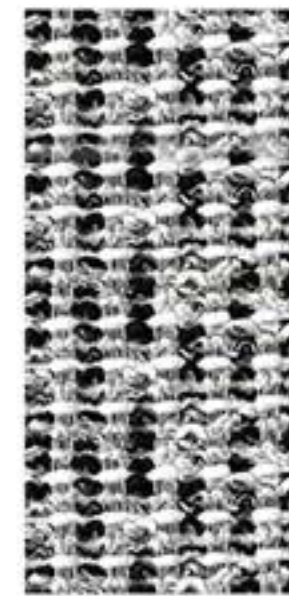
Organza



Boucle tweed



Nylon, Polyester, wool blend



Boucle tweed



Worsted wool



Astor Velvet

Swatch suggestions



FABRIC SWATCHES



Top grain leather on Super 150 wool



Cotton lace



Super 150 wool



Boiled wool



Cotton blend



Satin, wool blend

Top Grain Leather in colours below:



Night Black Top grain leather, Powder Blue Top grain leather, Khaki Green Top grain leather, Ruby Pink Top grain leather, Whisper White Top grain leather

Complete muslins + try look & decide of fabric



* soft pleates work well
 * fabric needs to hold them in place



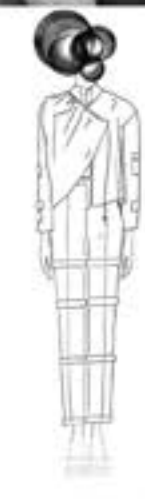
* Too long
 * too straight/revise shape
 * more of a Cape effect
 * sturdy



* revise bottom
 * pocket (too much?)
 * waist pleats shorter.
 * sturdy
 * should be paired with something softer not dress



* Add front flap
 * longer



* explore waist
 ↓
 wider?
 belt loops?
 double bottom closure
 * adjustable cuffs



* add front flap.
 * top flaps should be more centred.



cuffs in leather - don't like placket



Needs support to hold shoulder pleat - add polyorganza or crocheted?



straps to be unattached to avoid unwanted tension



no straps oversized layers



think of closure



leather full back remove garter at the back



pocket too much

Line up changes/updates

changed around outfits/garments



added another look

switched around fabrics

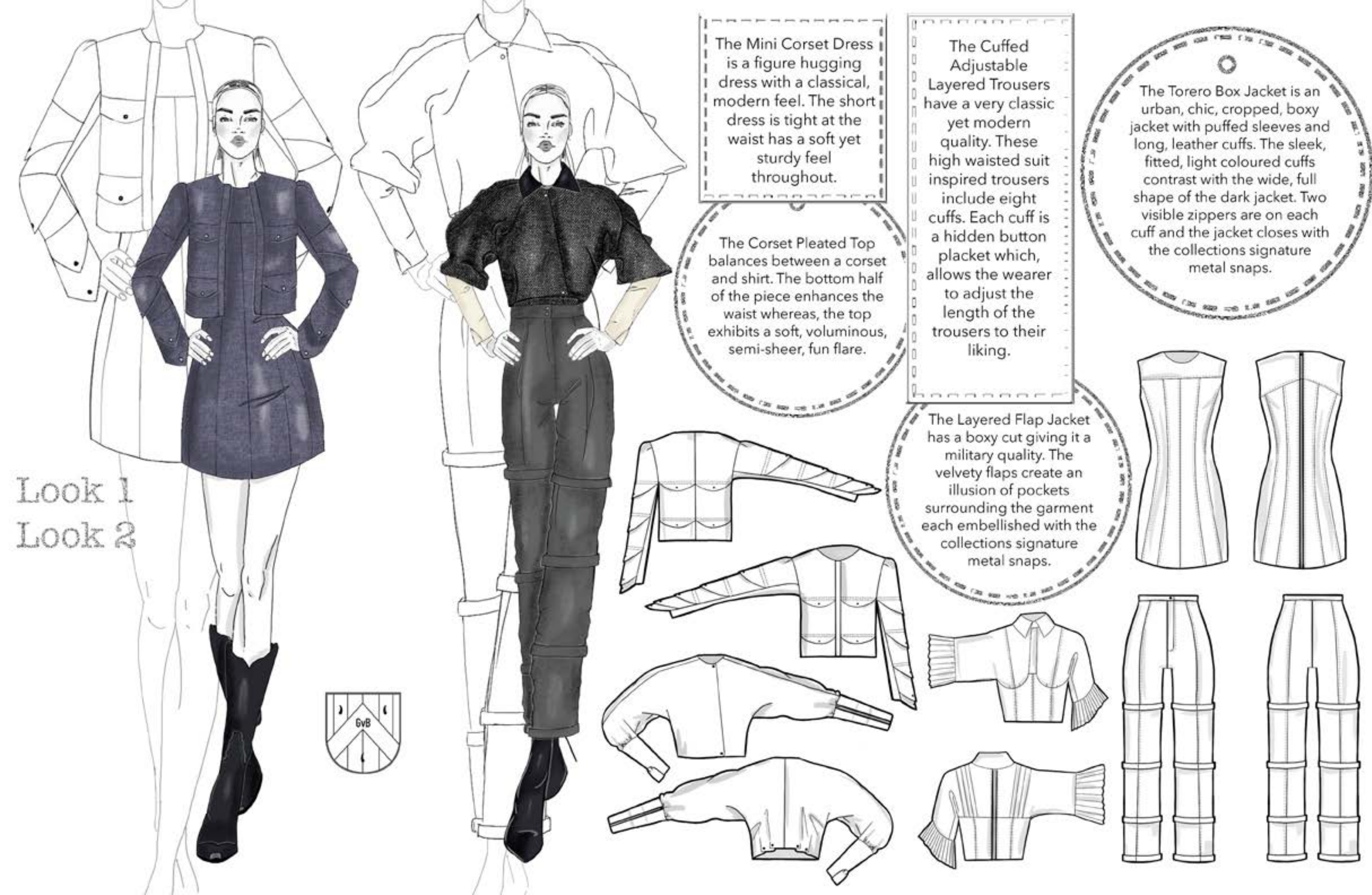


MY MUSE

With this collection I want to accomplish a mixed idea of heritage and national identity. My consumer is a woman who travels, is independent and feels comfortable connecting herself to different parts of the world. She's brave and expresses this through her character and way of dress. She's proud of who she is, has an open mind and doesn't like to define things by the restrictions and stereotypes made by society.

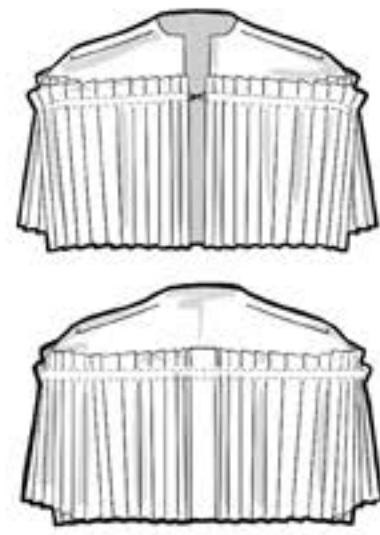


Digital Drawing

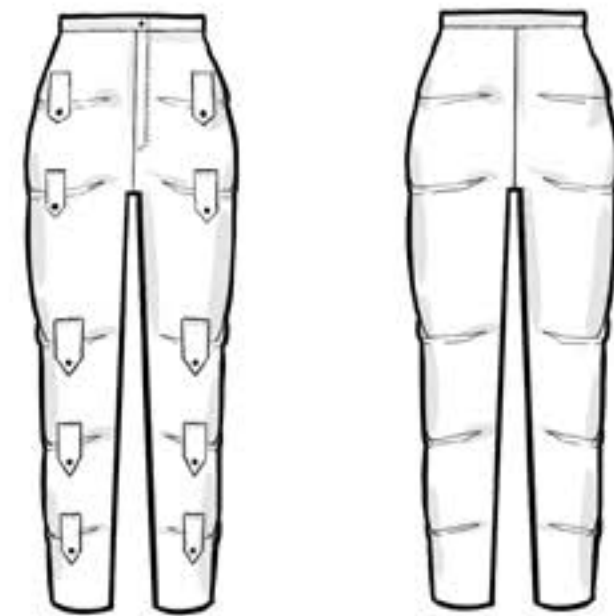




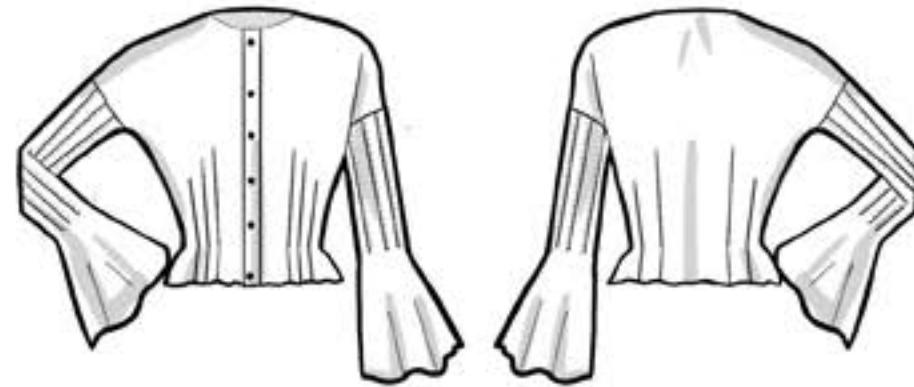
The Embroidered Wool Dress is a delicate mini, button down shirt dress with a mimicking, light wool undergarment. The piece exposes delicate pleats to enhance the waist and open, flared bottom sleeves.



The Leather Flapped Gathered Trousers have a military quality. Light coloured leather flaps hold the gathers in the high waisted trouser together and are embellished with the collections signature metal snaps.



The Embroidered Wool Oversize Sleeved Shirt is a delicate short, button down shirt. The piece exposes delicate pleats to enhance the waist and open, flared bottom sleeves.

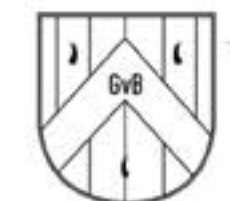


Hand Crochet Knitwear Look 5



The Layered Oversized Jacket has an elegant, casual quality. The dropped shoulders, enlarged sleeves and contrasting fabric layers enhance the jackets movement and shape.

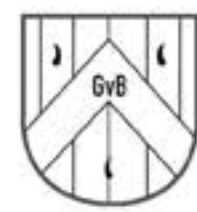
The Crochet Frill Tweed Dress is a figure hugging corset dress with a classical, modern feel. The short dress is embellished with a crochet, frill, finish at the bottom.



Leather Volume Blazer

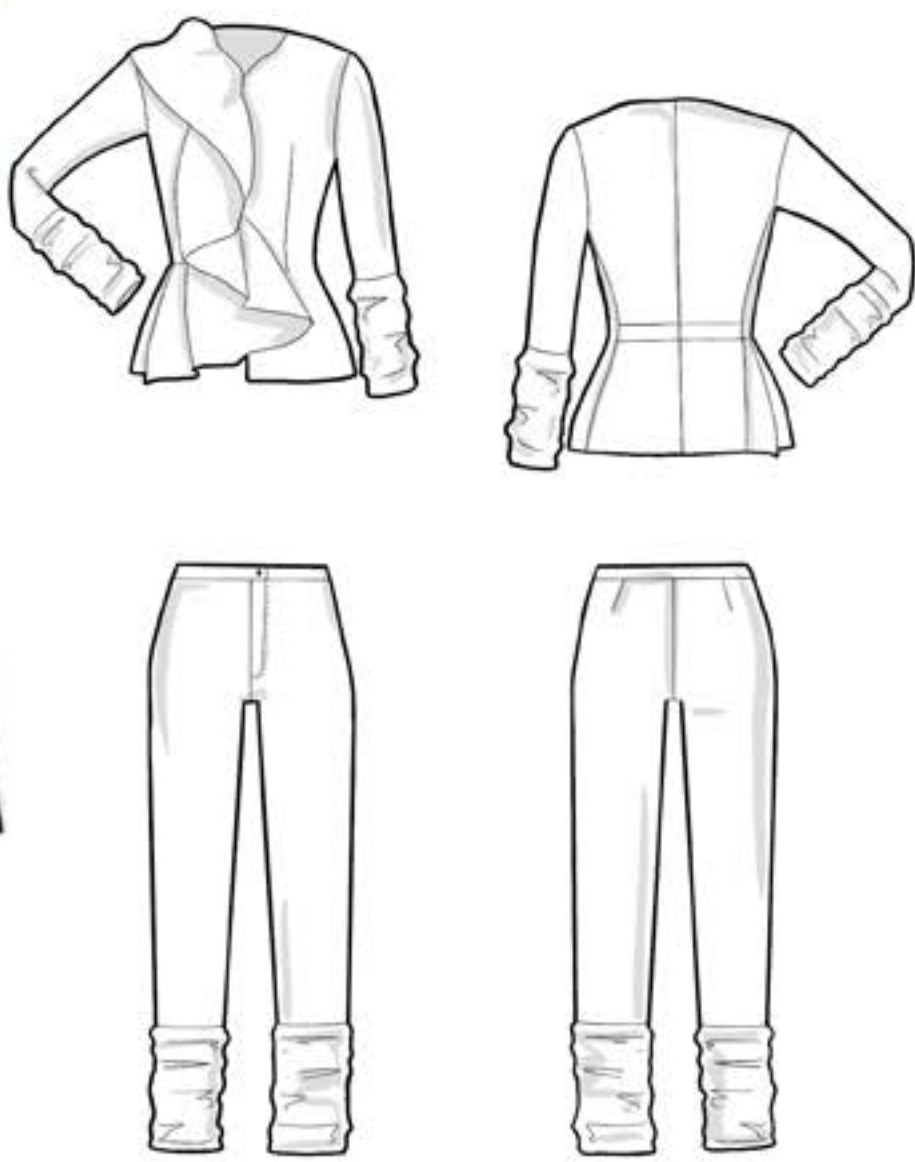
Suit Trousers

Look 6



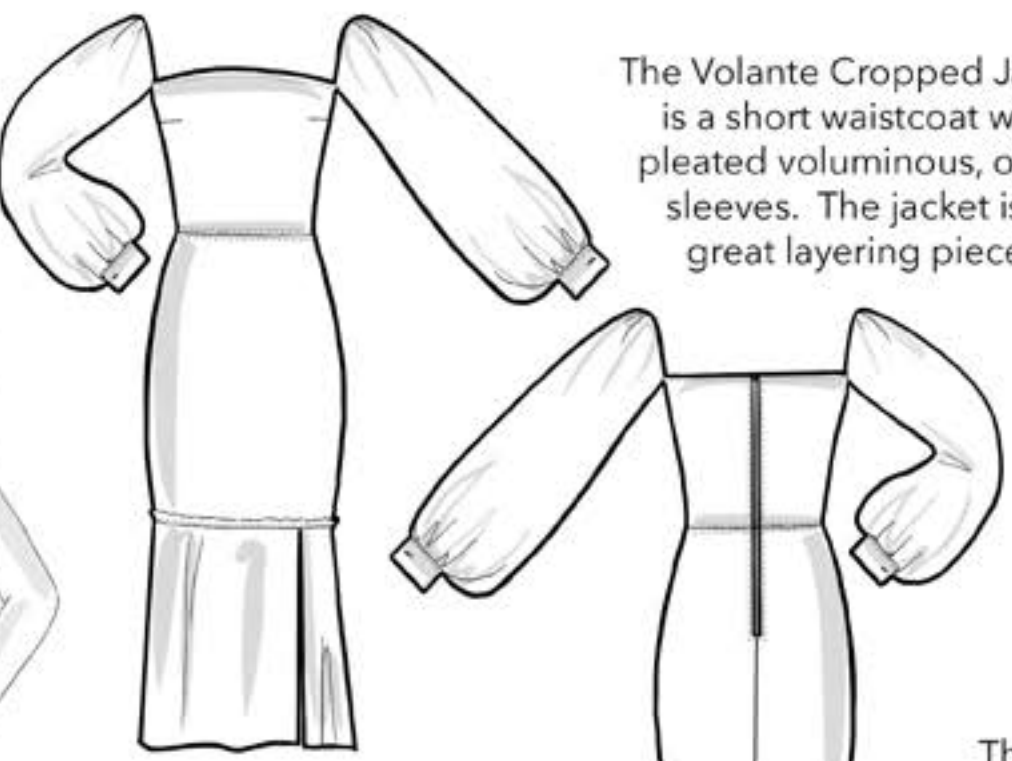
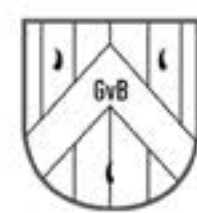
The Leather Volume Blazer has a voluminous ruffle adorning the front and extenuating the figure. Combined with gathered sleeves and an elegant, black Manton de Manila inspired leather pattern at the back.

The Suit Trousers are high waisted, fairly fitted, elegant, sleek, minimalistic trousers with gathered bottoms.

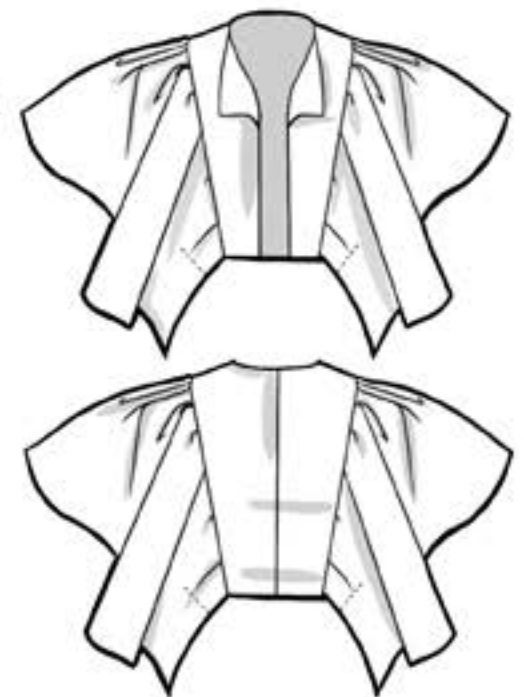


Look 7

Look 8

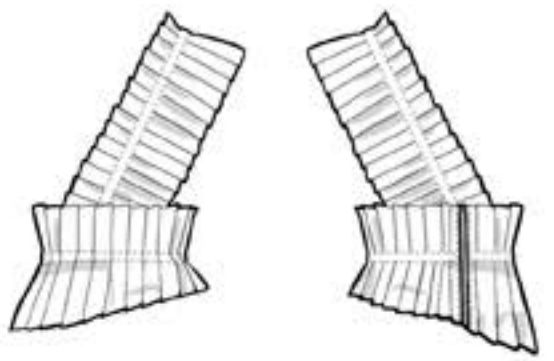


The Volante Cropped Jacket is a short waistcoat with pleated voluminous, open sleeves. The jacket is a great layering piece.

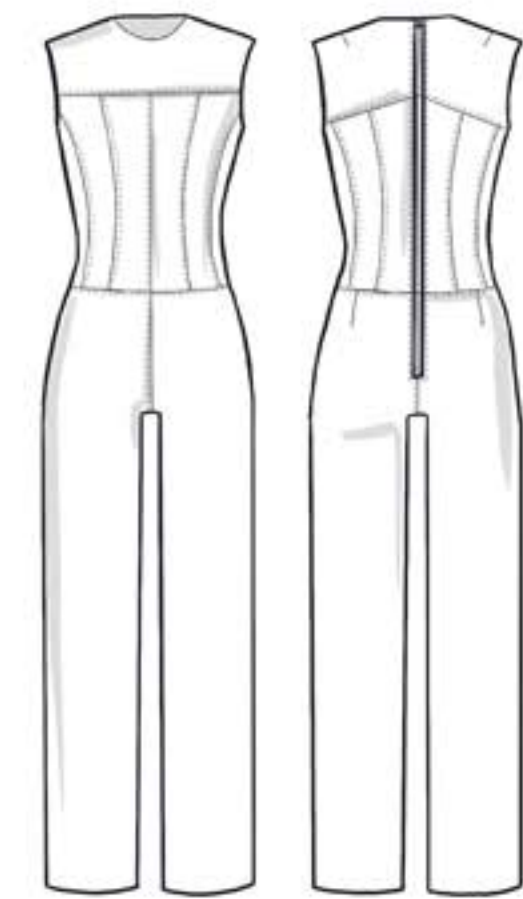


The Corset Jumpsuit has an elegant, classic quality. The tight fitted corset bodice contrasts flatteringly with the loose, ample trouser.

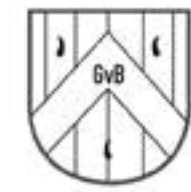
The Midi Wool Lace Dress is a heavy weight, figure hugging silhouette with lace oversized sleeves and a lace bottom finishing ruffle. The sleeves hold in place with heavy weight fabric cuffs creating an elegant contrast between sturdiness and flow.



The Pleated Belted Top has a very fun quality. The several layered pleated piece is a great layering accessory. Finished



G v B



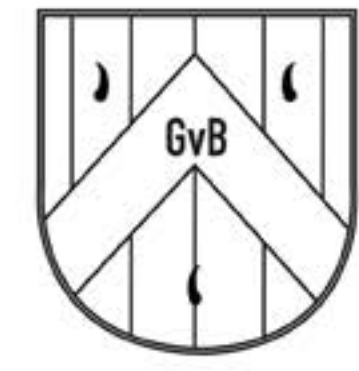


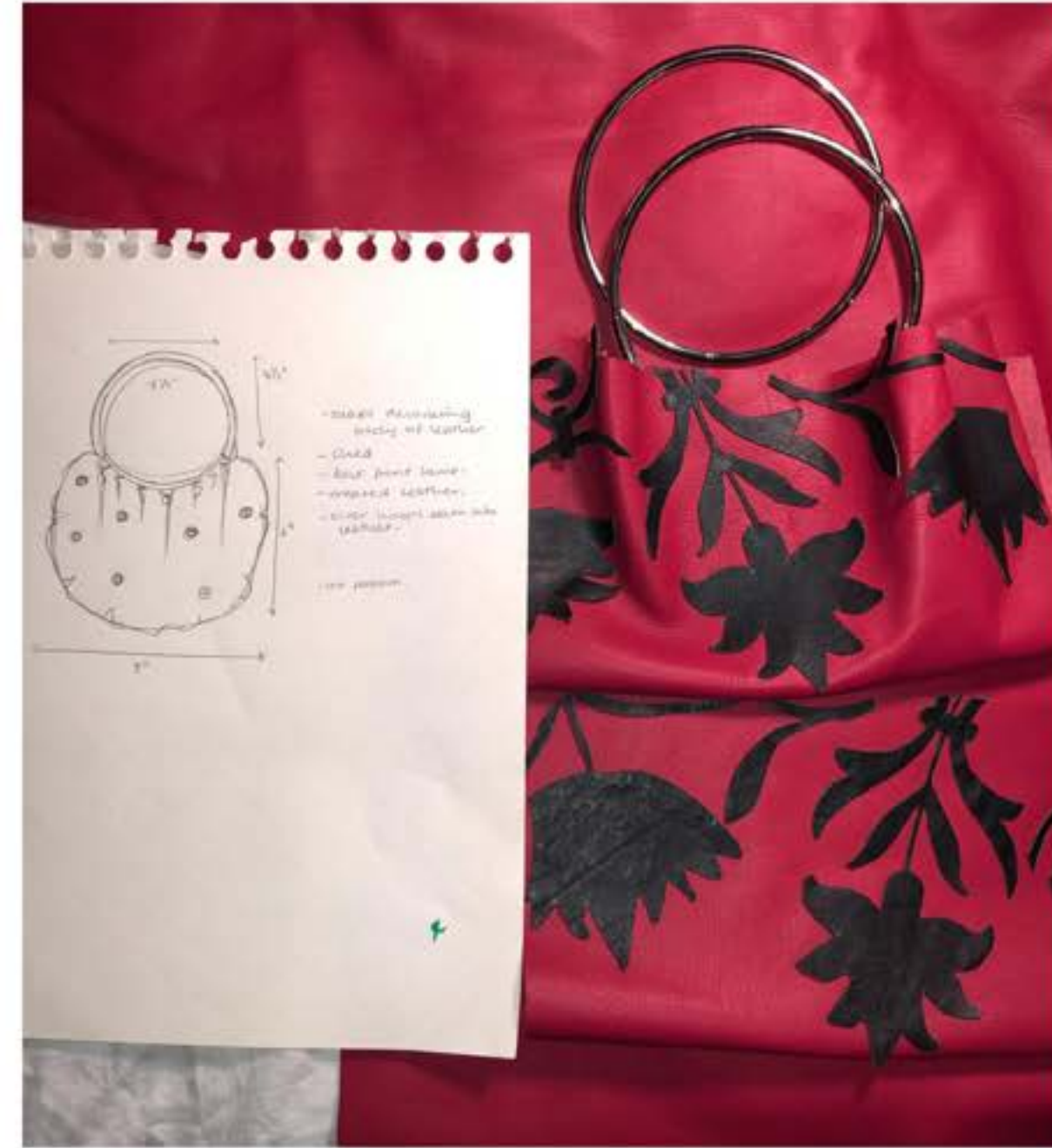
Top Grain Leather in colours below:



FABRIC SWATCHES

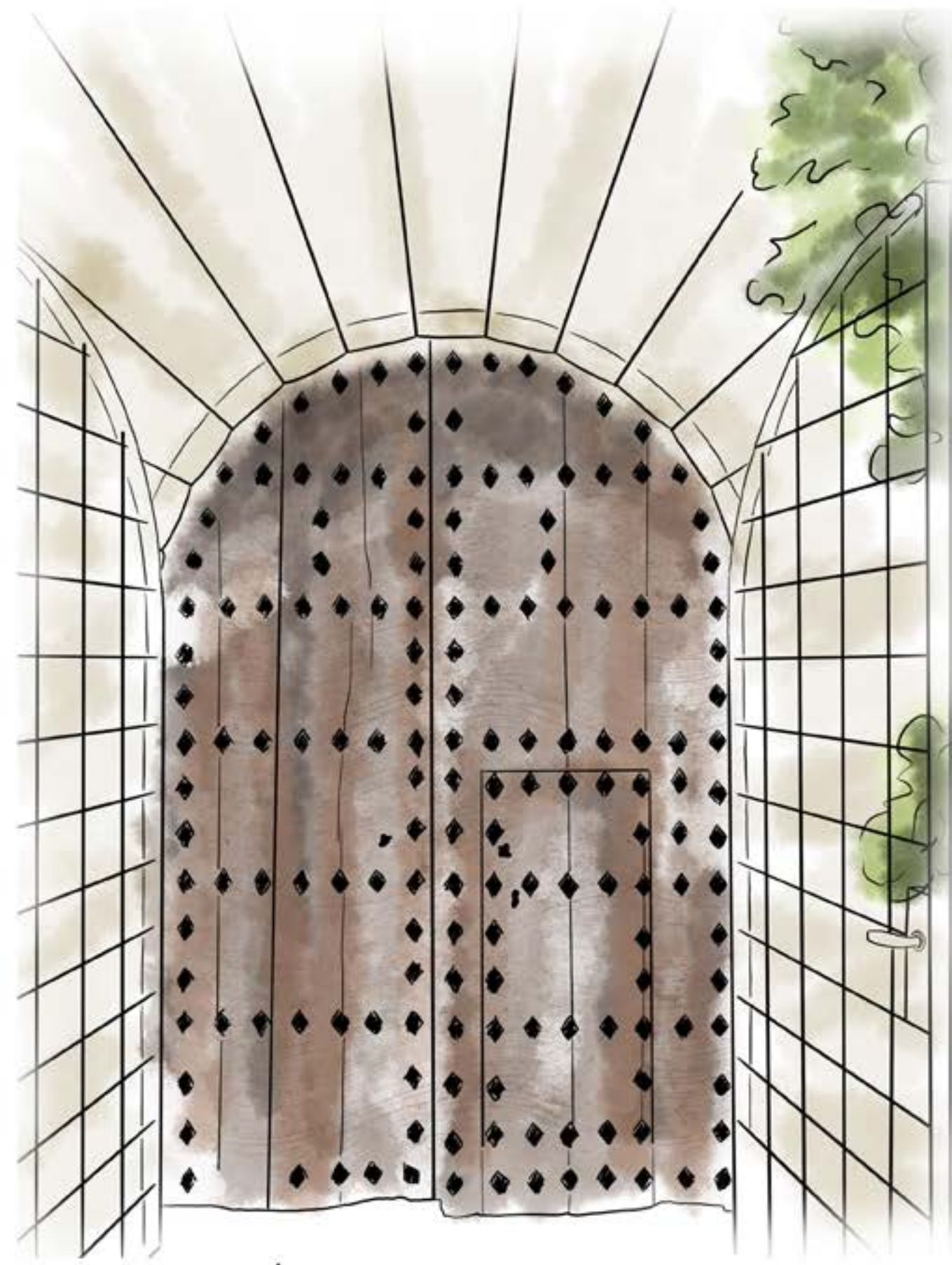
HANDBAGS OUTCOME





LOOKBOOK

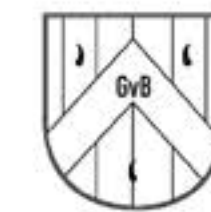




Digital Drawing



The Thesis Collection Lookbook, made during quarantine at home in the Spanish Countryside.





















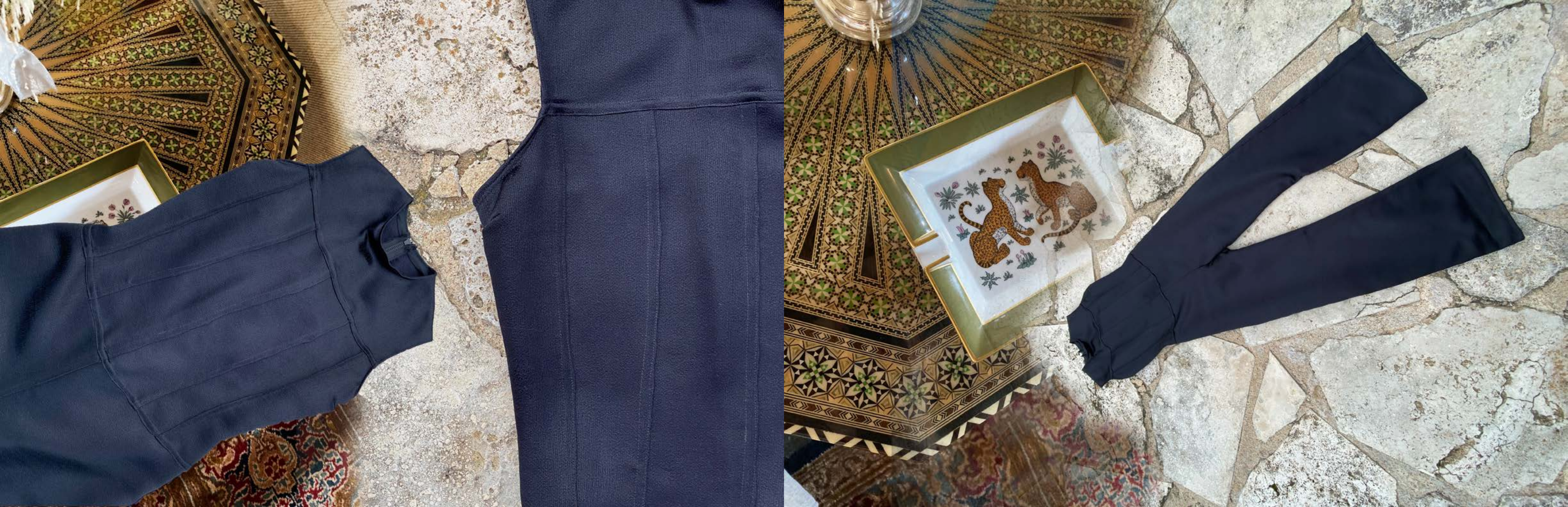




















VIRTUAL REALITY EXPERIENCE

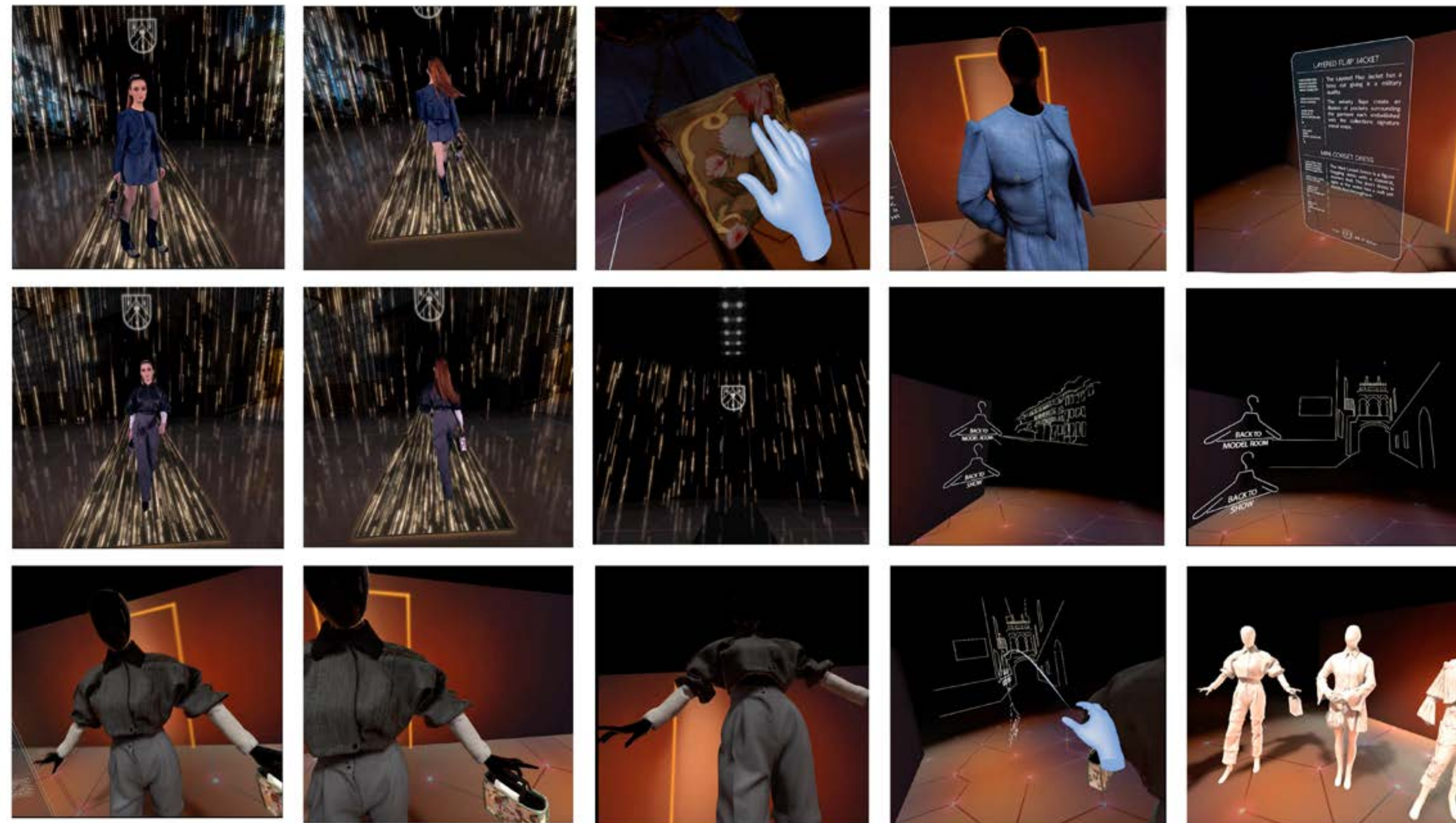
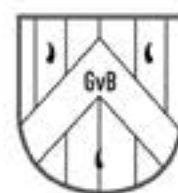
AITANA  GvB X VIRTUALSOFT STUDIOS

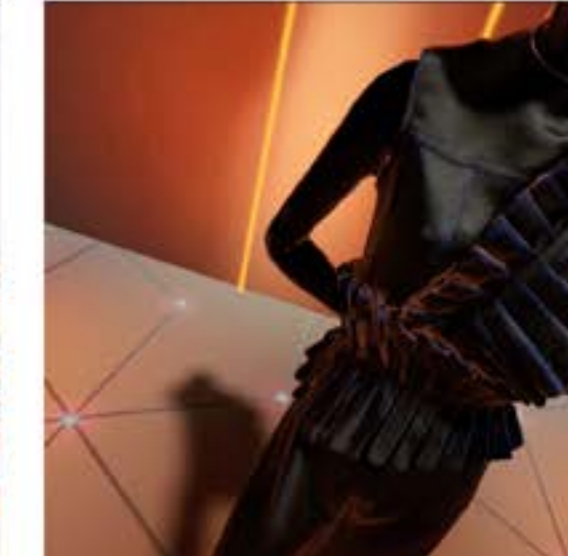
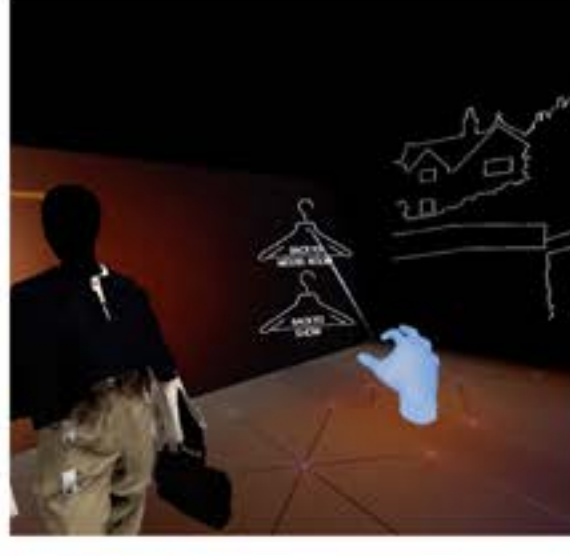
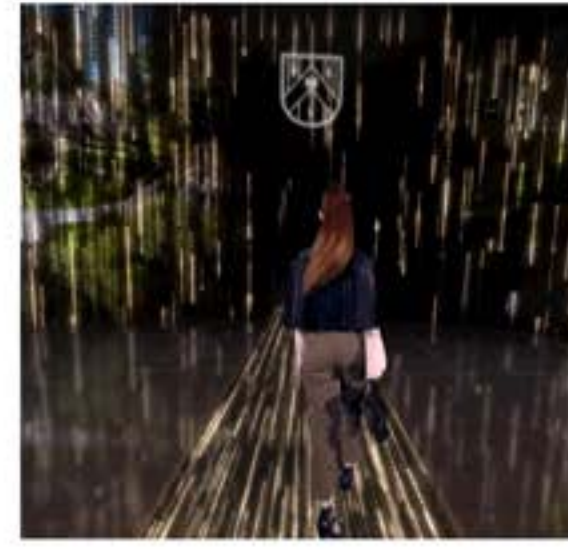
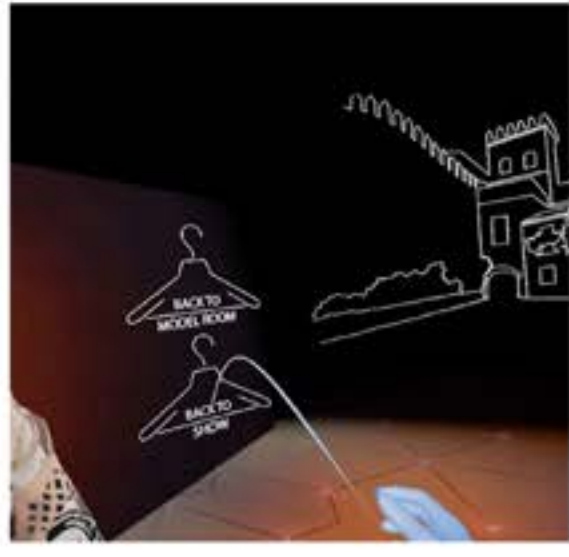
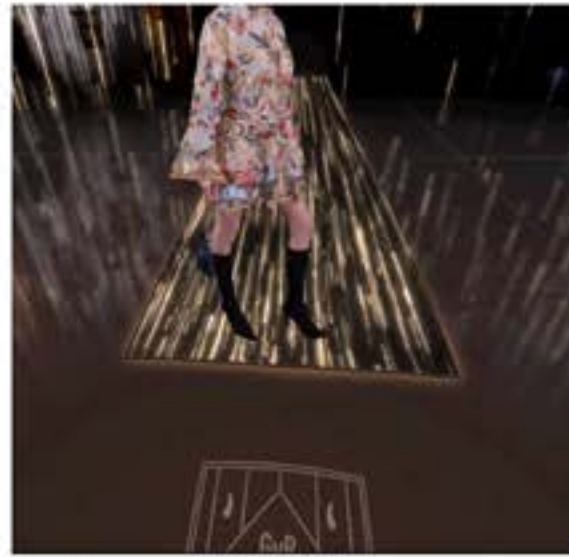
I have always been interested in finding new and exciting ways to exhibit and show fashion. I collaborated with the company VirtualSoft Studios in Seville, Spain to create a different way of expressing my story visually.

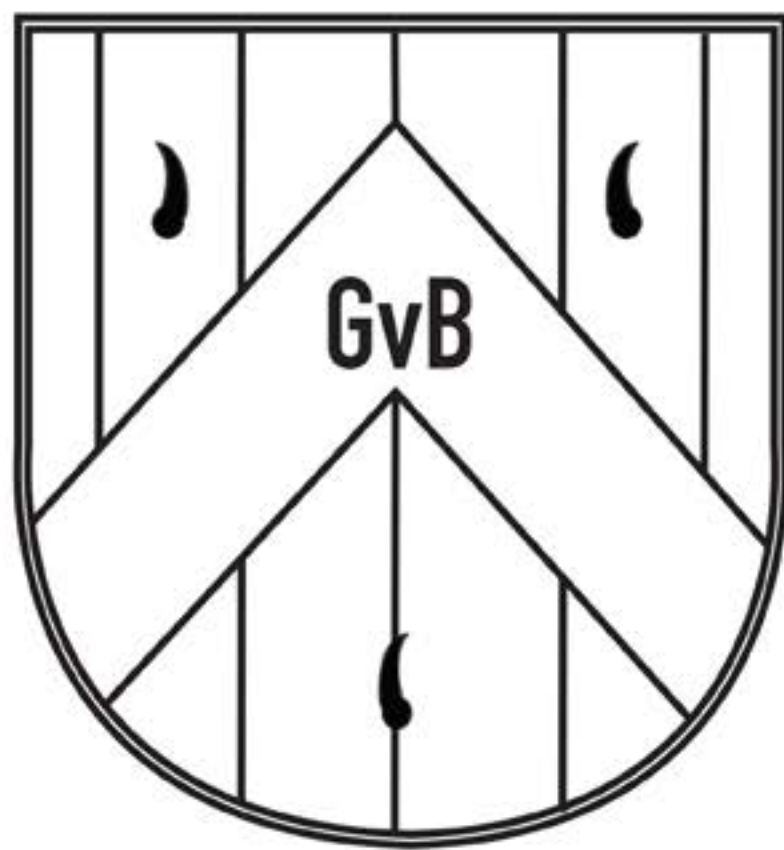
The VR experience is a full 360° environment where, when wearing the headset embraces a different reality and accomplishes a sense of presence for the viewer. We have created a runway show for each of my looks. Every look has a slightly different room and experience. The music and images change for each look which, creates a visual story based on the inspirations of each outfit.

Through the process of 3D scanning we have also designed a virtual showroom. The viewer again has a 360° view of the looks and garments. The idea is for the viewer to be able to get up close and examine the garments as well as, read from a panel any information they might want to know for each of the garments.

The idea is to create an experience that brings the clothes to life and takes the viewer along with them.







AITANA GIEBELS van BEKESTEIN