



YU CHENG YEH

THESIS



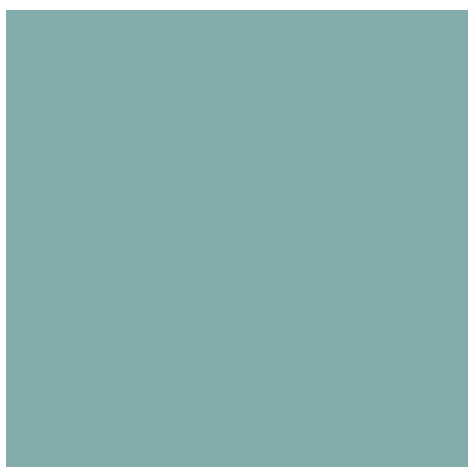
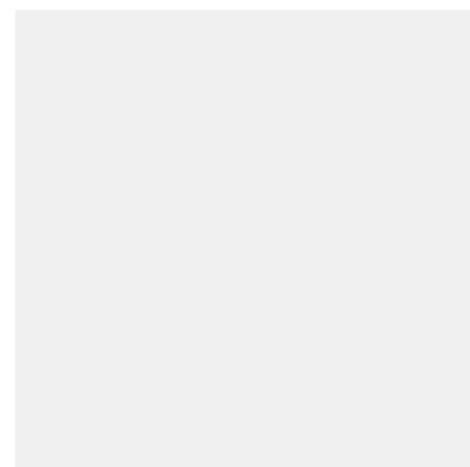
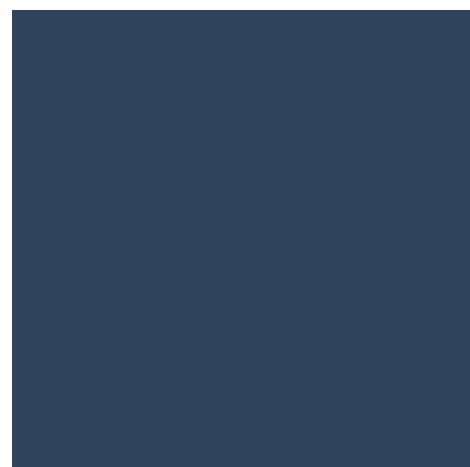
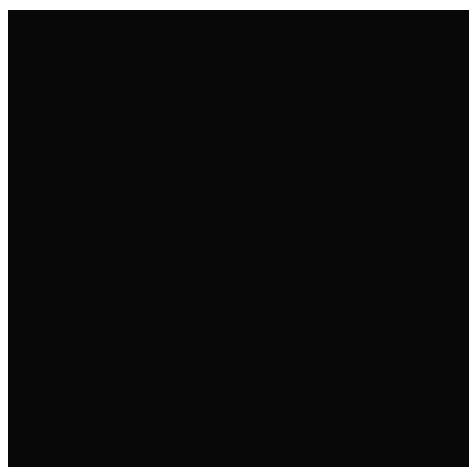
Throughout my life, I've struggle a lot because of my queer identity. I realized that the identity is not so welcomed by everyone at very young age. Related childhood memories changed my personality a lot and lead me to have the tendency of dealing with all the emotions myself. Long term effects was that I do not know how to express how I feel anymore and it limits my ability to feel. From that, I decided to deliver all the words I want to speak out and the emotions I want to express from my works.

In my collection, I combined a lot of my past work that talks about my emotions into the garments. Also, flowers and ruffles are essential elements to represent the feminine part of me. A flower to me is something that is exquisite for such a short moment but dies relatively fast, which is how I see all my relationships and happy memories. The silhouette and style of the garments are the projection of how I want people to see me. The whole atmosphere of the collection is quite feminine as menswear but still masculine for the most part. That is the balance I want to keep with myself. I hope people who have the same identity or struggle with me can find their most comfortable balance and way to express themselves.

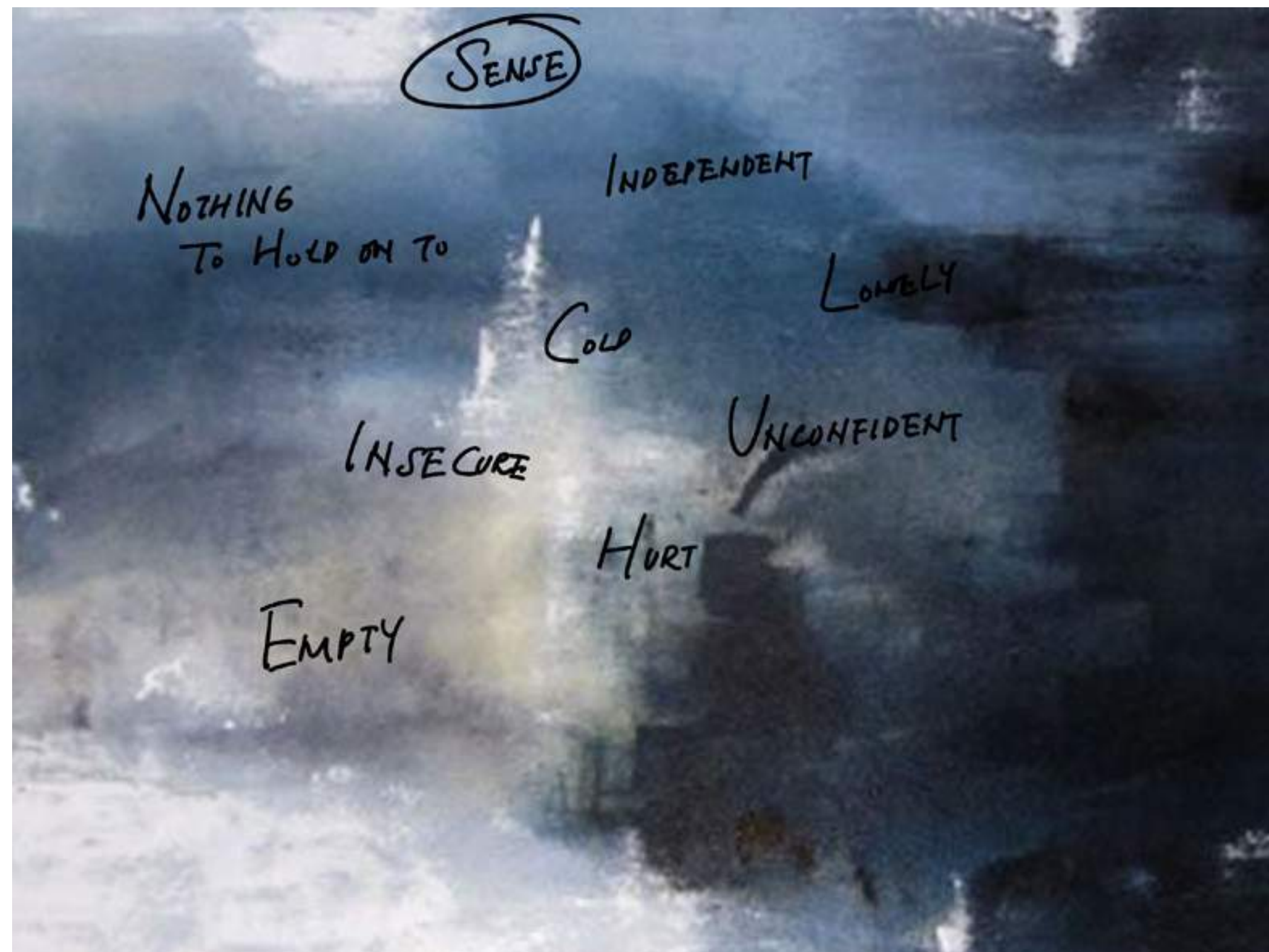
MOODBOARD

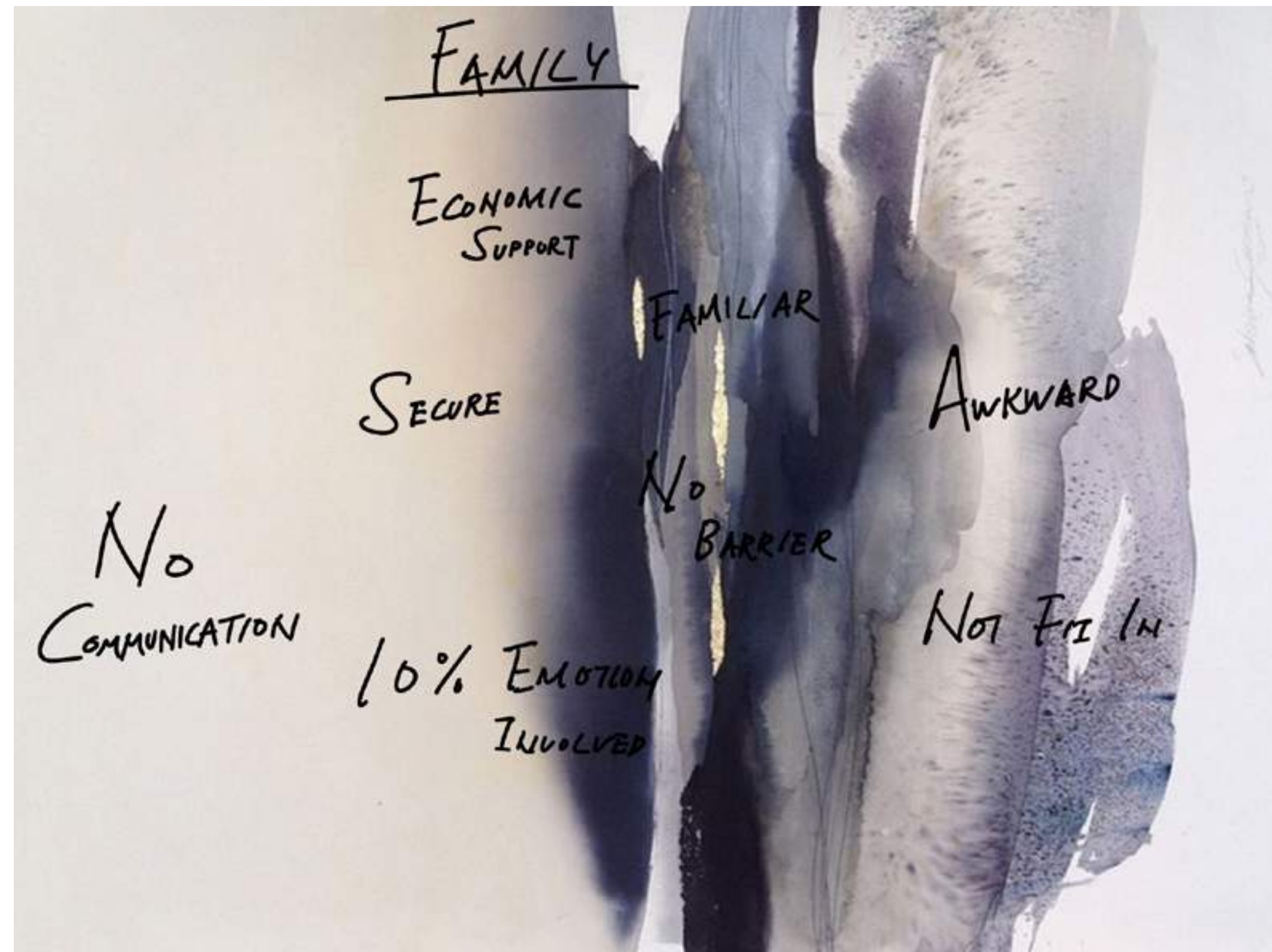
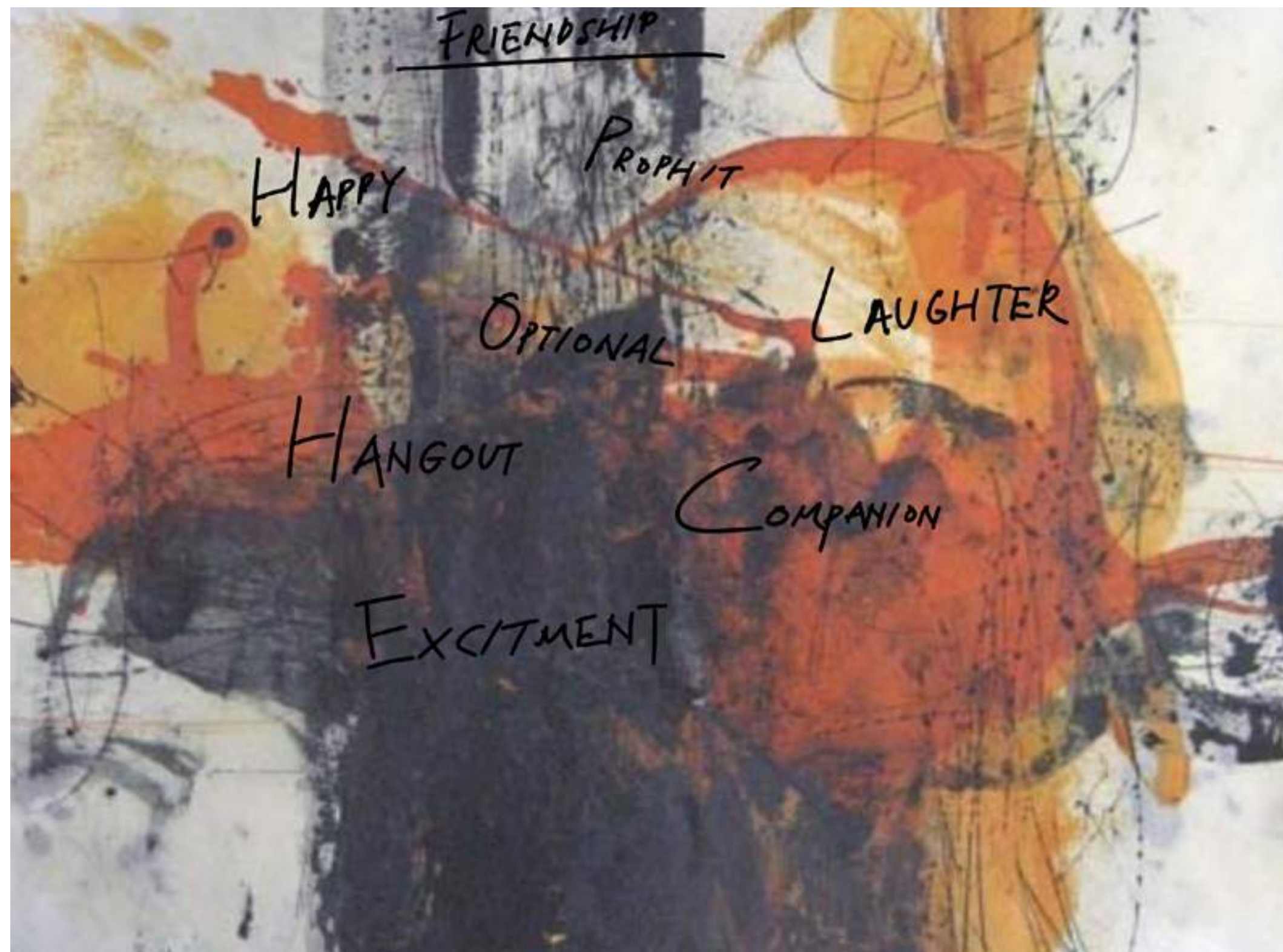


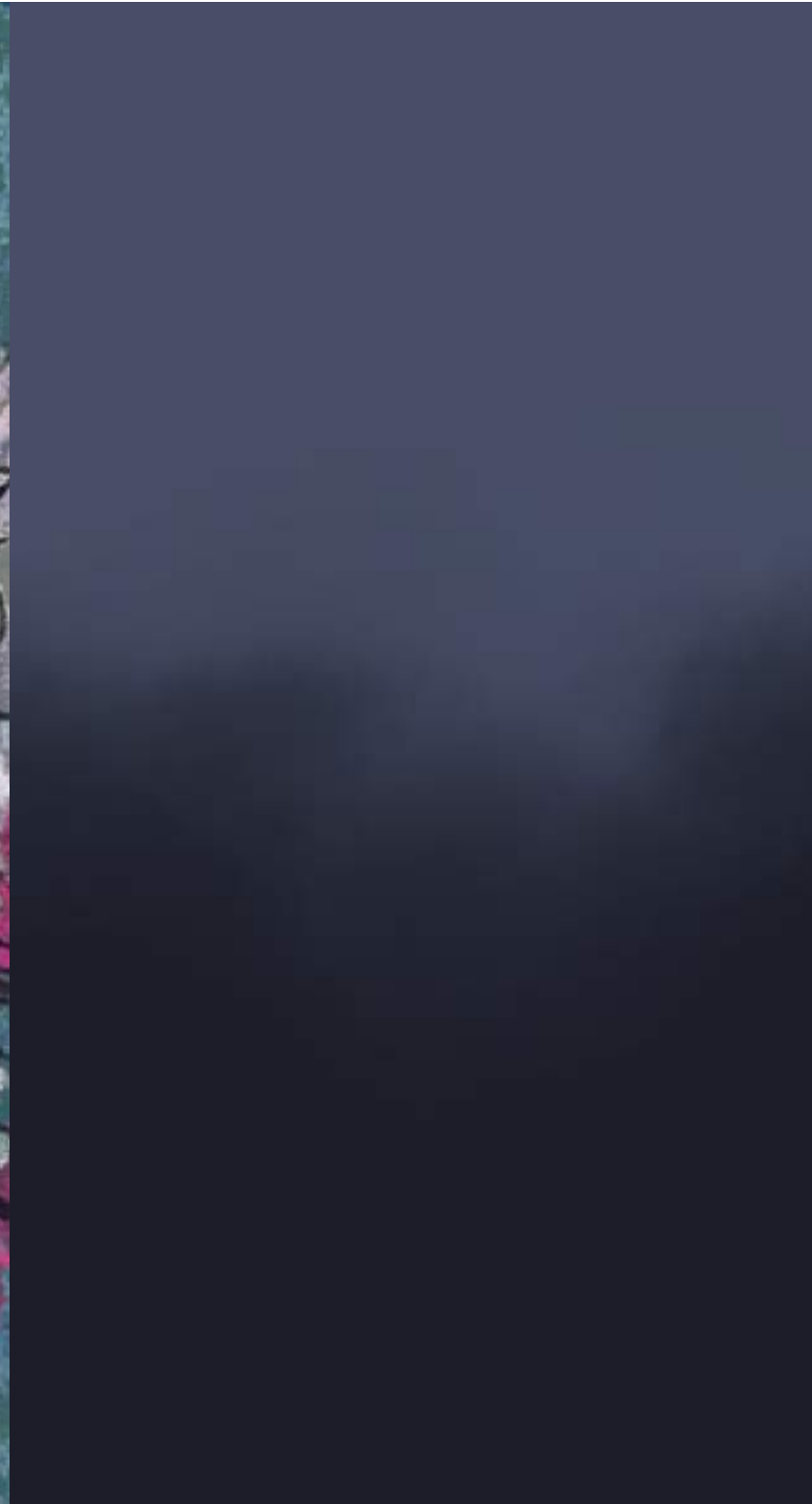
COLORBOARD











MANIPULATION



DESIGN PROCESS



Navy cashmere
with longer hero
versized sleeves
and two front
pockets



Navy color with
embroidery
of withered
flower from past
painting work

DESIGN PROCESS



Tifaany blue with exaggerated shoulder. Tags of people who made big impact sewn on top



Gradation from whitish blue to navy blue



Gradation from navy to lighter blue



DESIGN PROCESS



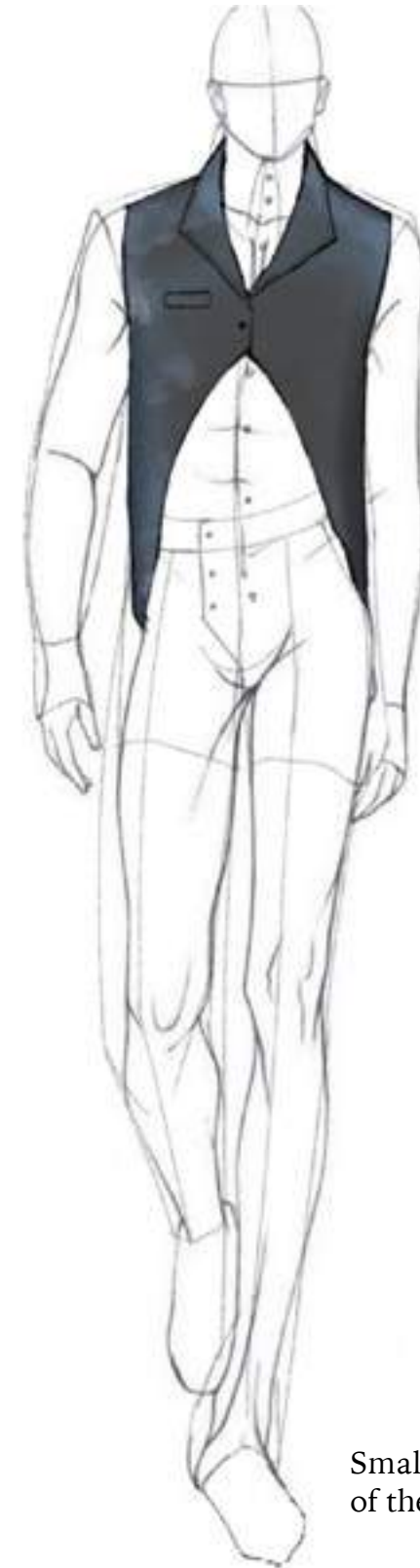
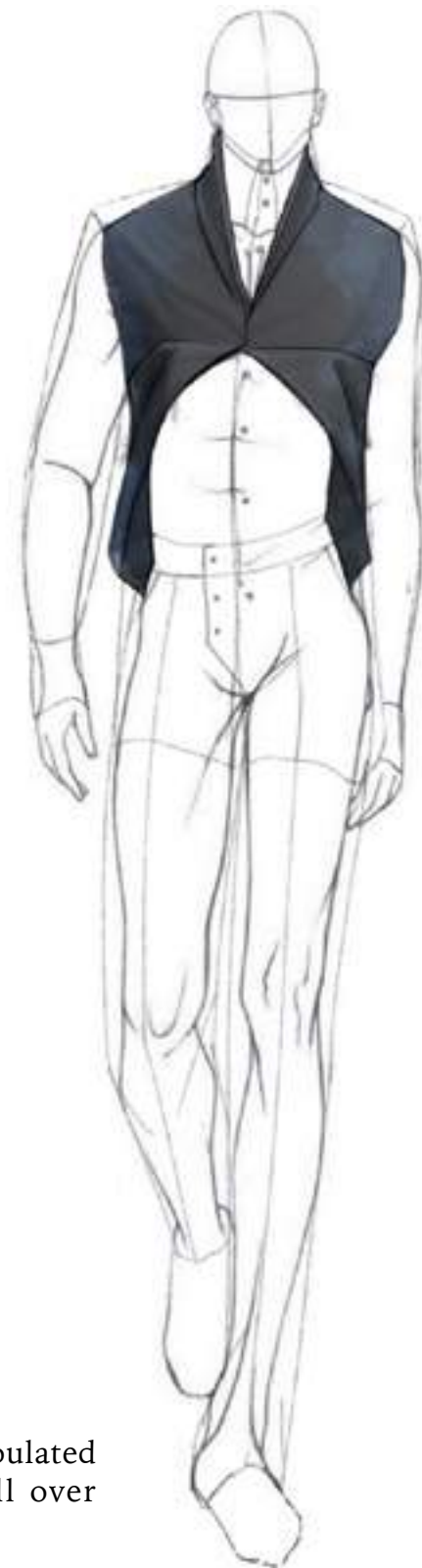
Self manipulated
textre surface
with intentional
whole on top



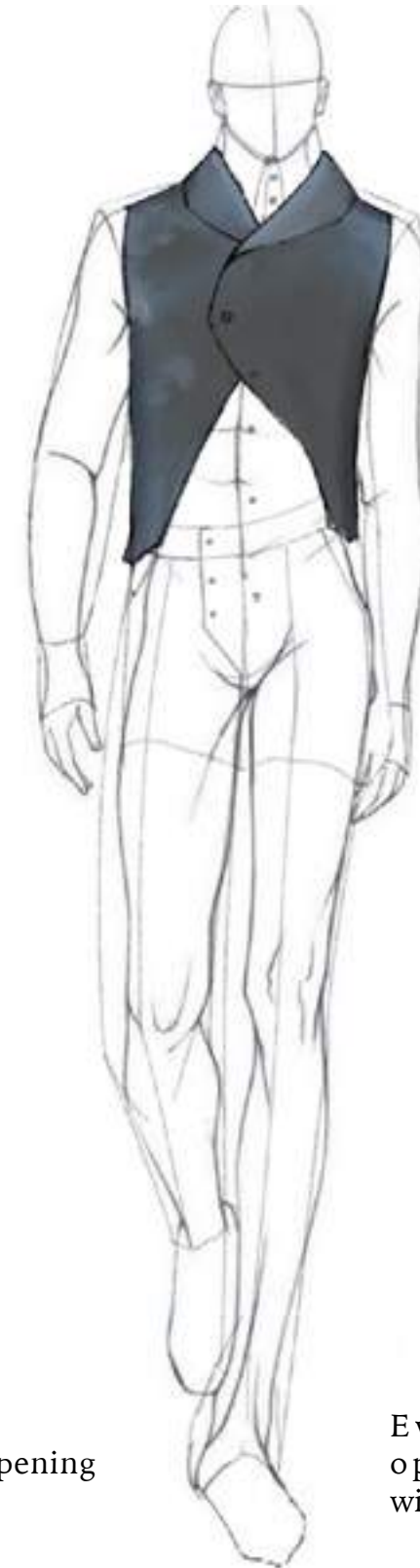
Self manipulated
textre surface
on half of the
shirt and only
dark green on the
other side



self manipulated
texture all over
the shirt



Smaller opening
of the vest



Even smaller
opening with
wider collar



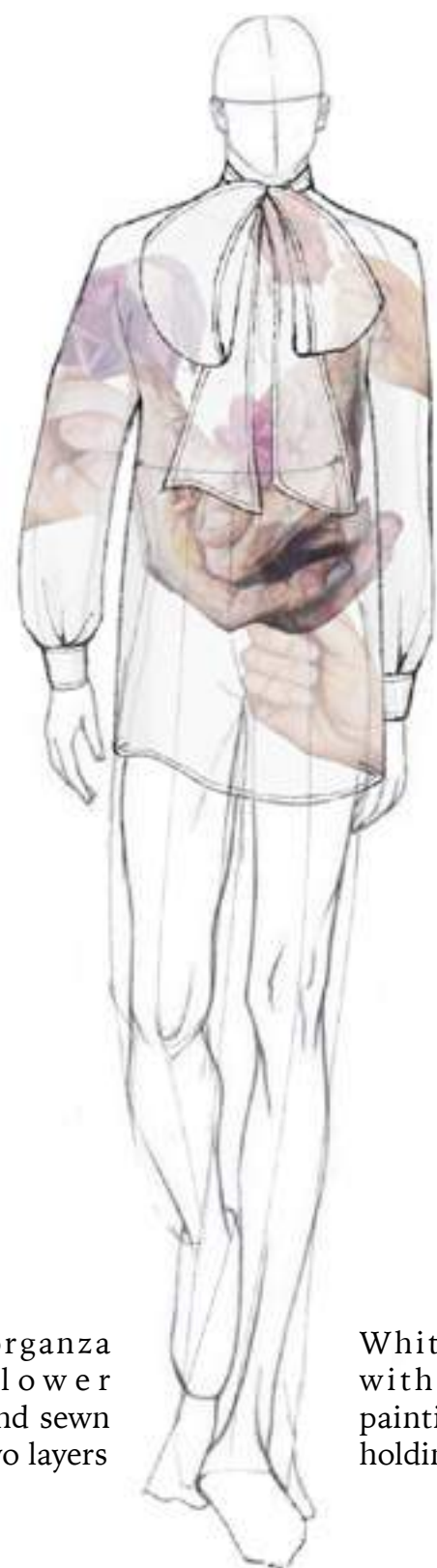
DESIGN PROCESS



Two layers of yellow and pink pleated fabric



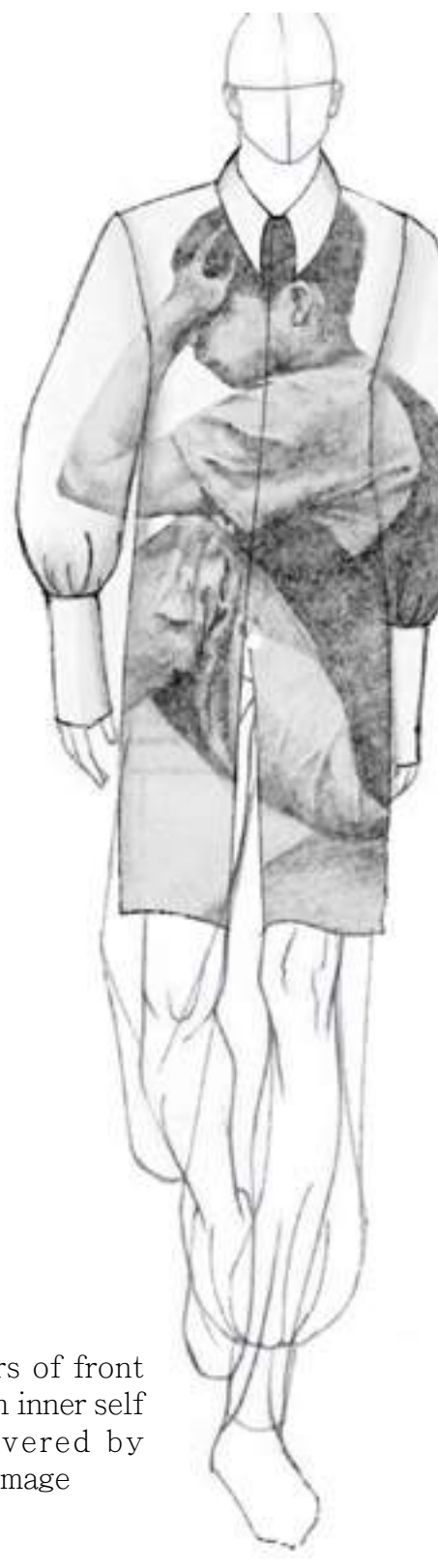
White organza with flower petals hand sewn within two layers



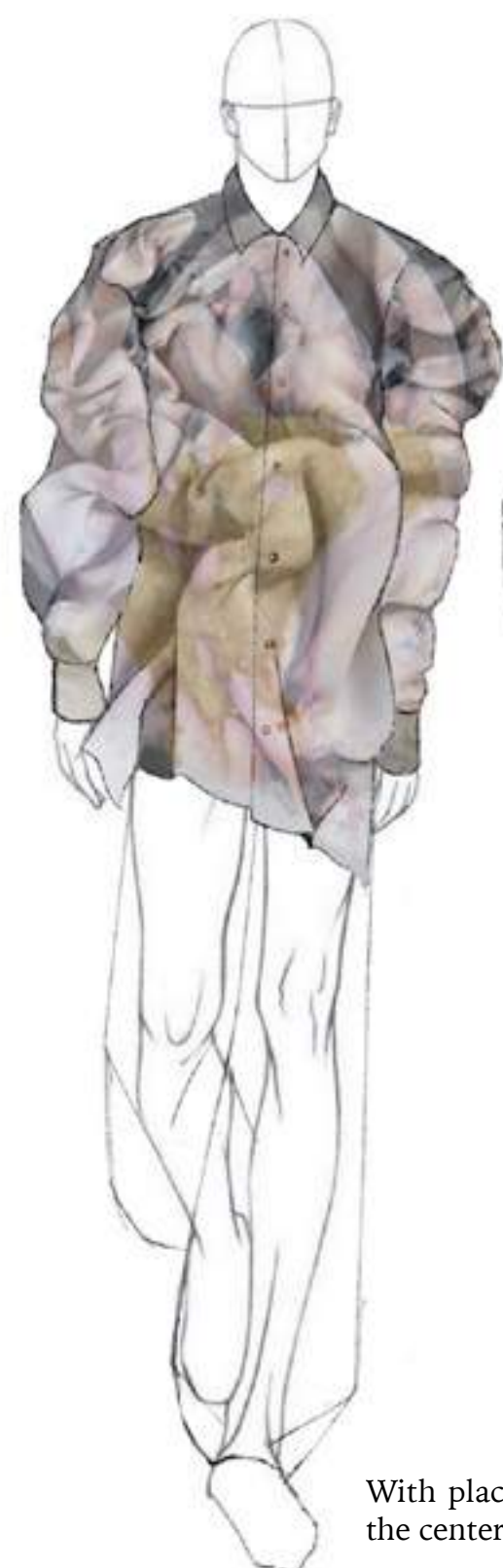
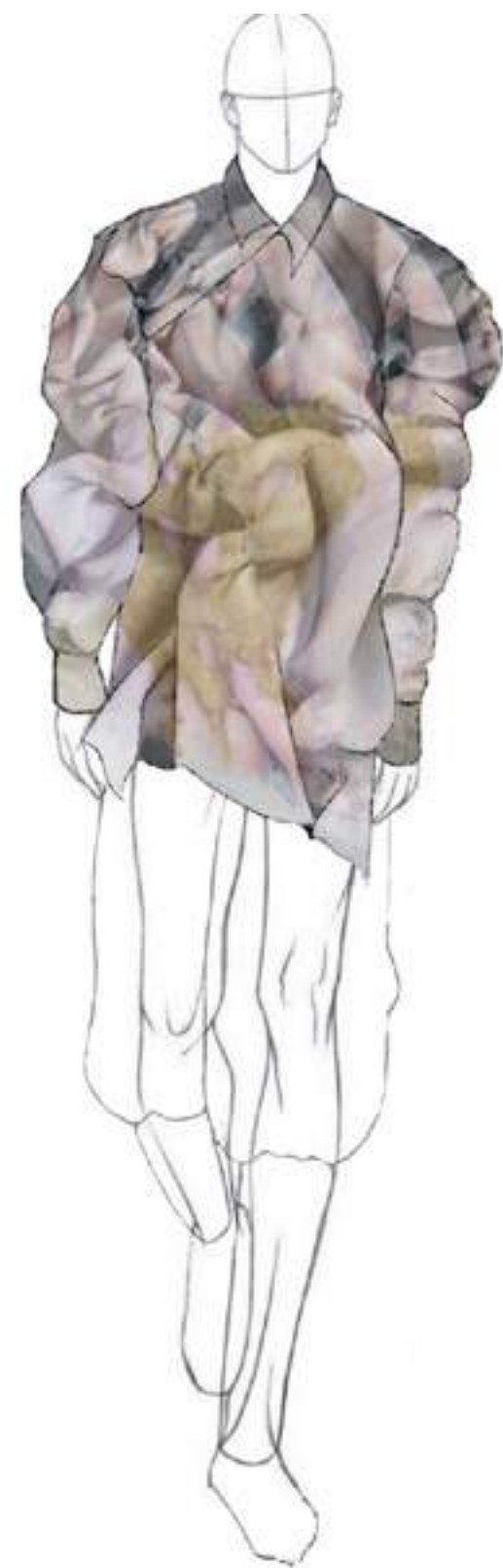
White organza with prints of painting of hand holding flower



Two layers of front pieces with inner self image covered by outer self image



DESIGN PROCESS



With plackets on the center front



Puffed pants with slimmer silhouette at the location of calf



Wider pants with more puffness near the ankle



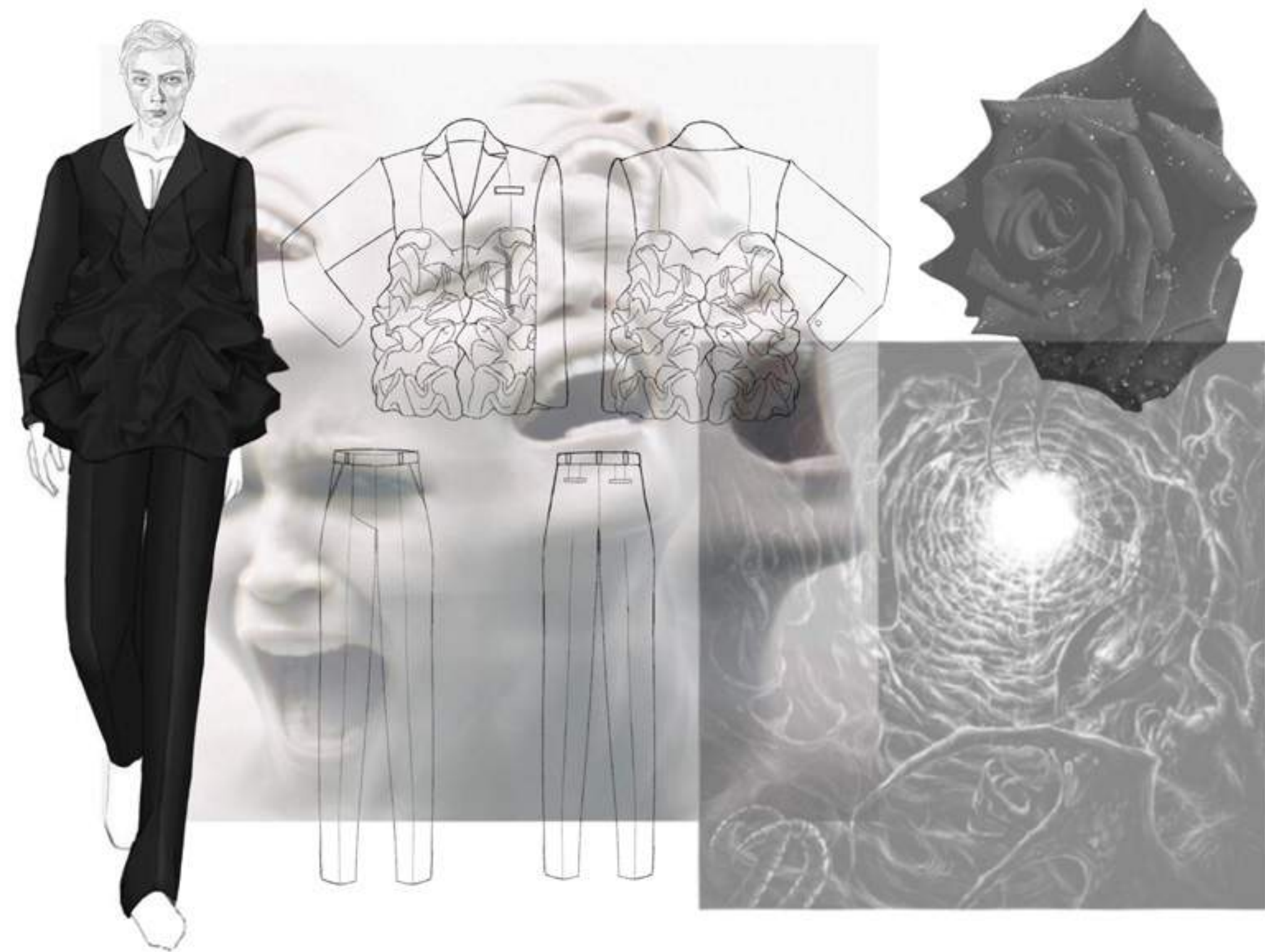
Handsewn flower all over the shirt following the the



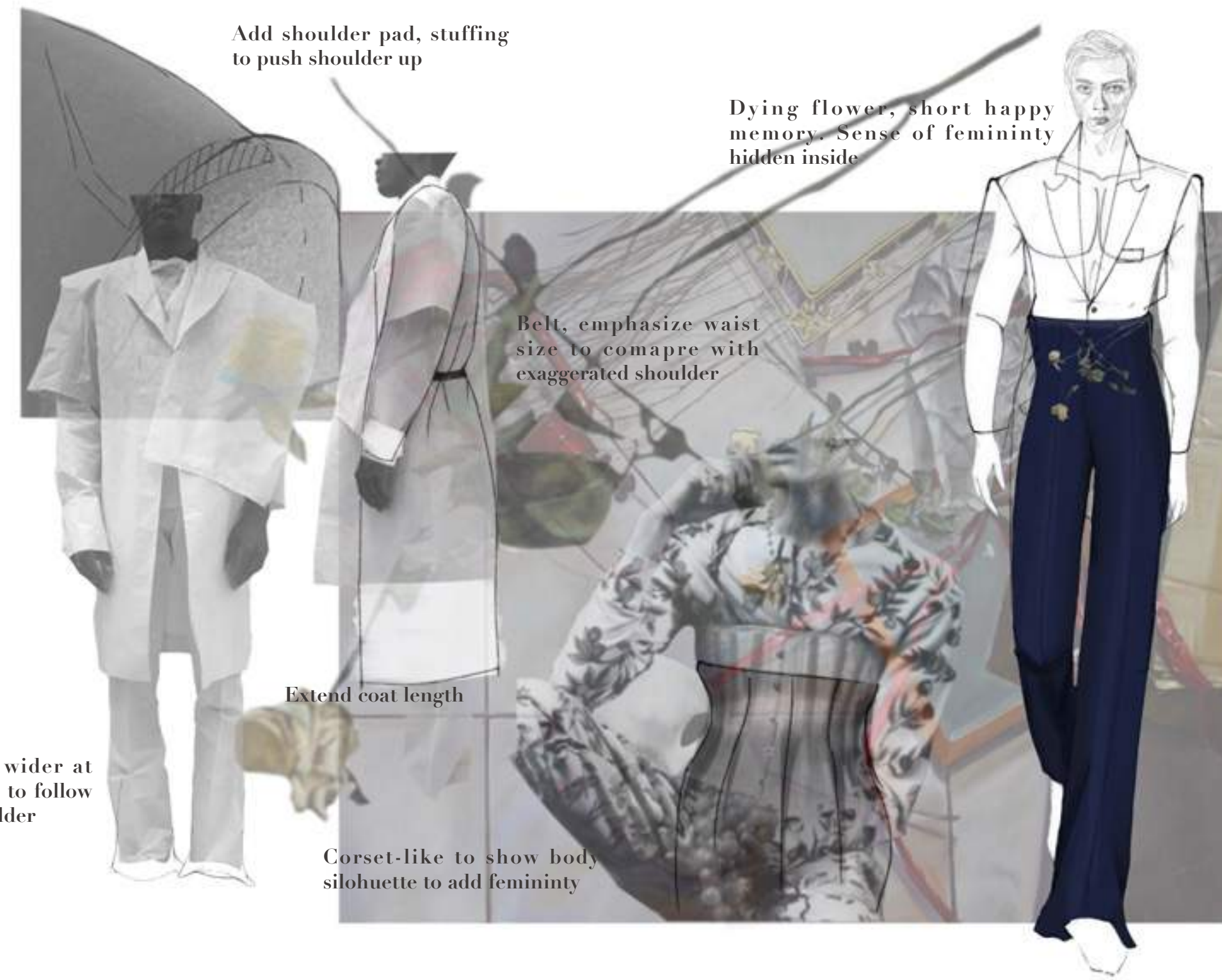
LINE UP



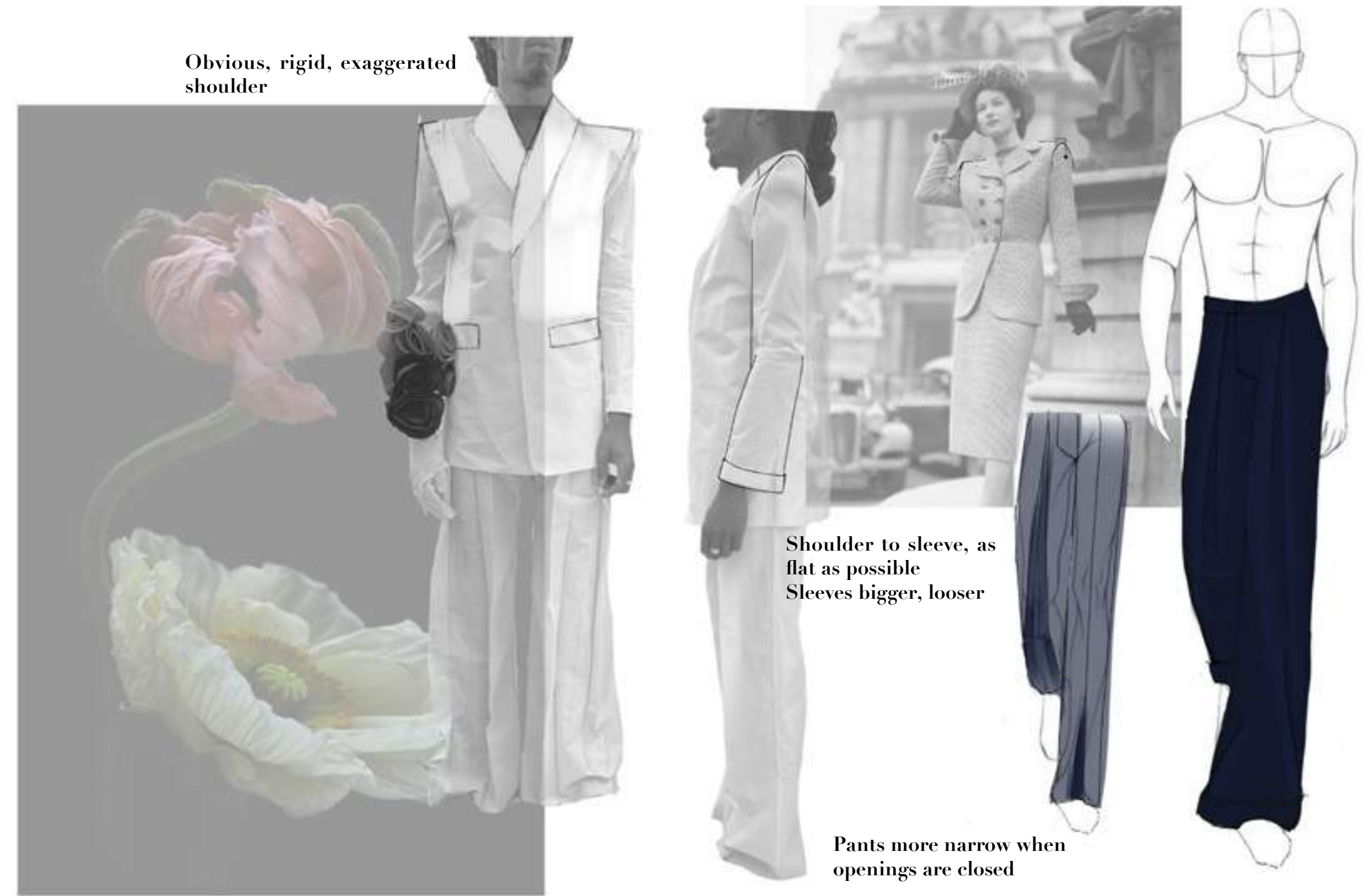
LOOK 1



LOOK 2



LOOK 3

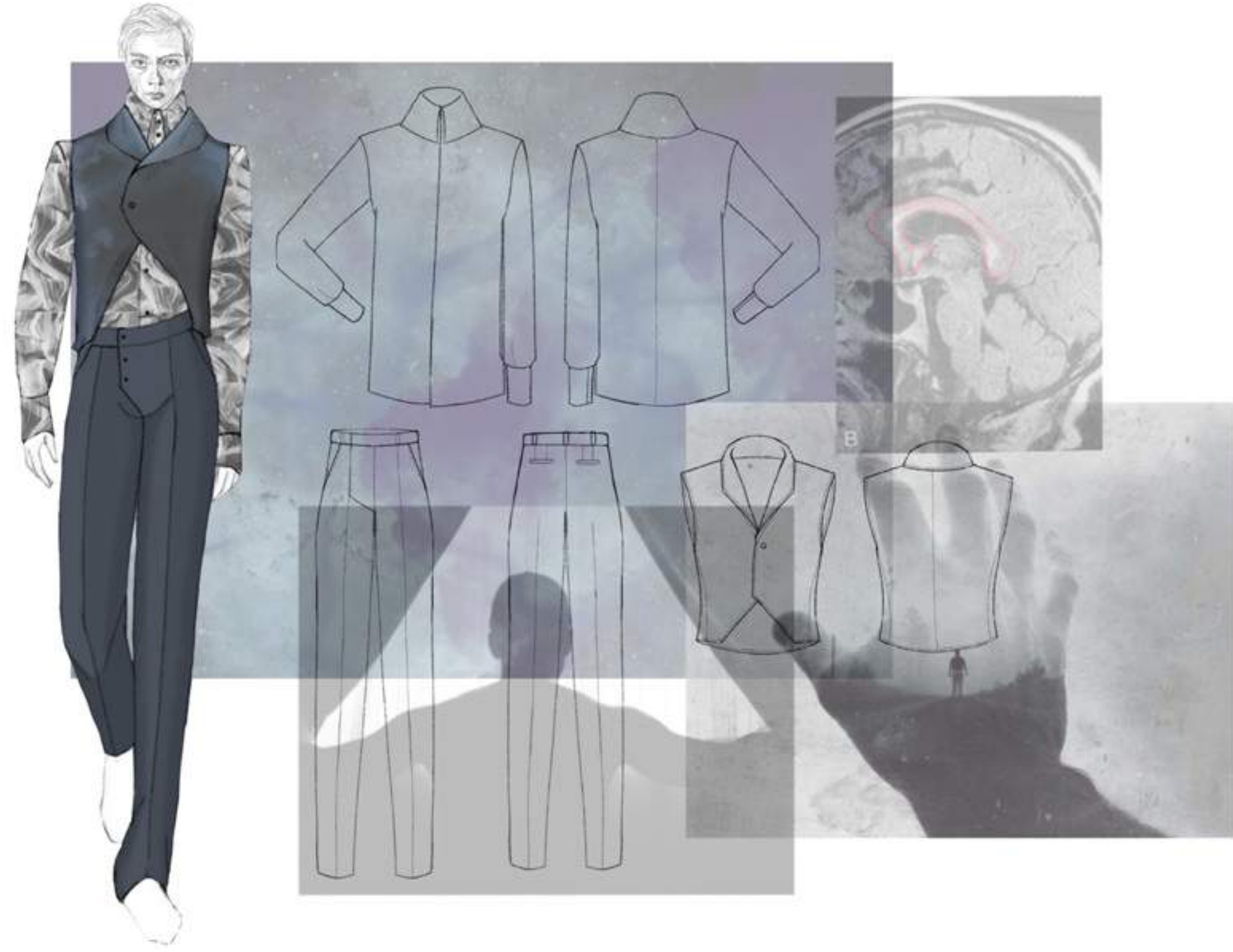


Obvious, rigid, exaggerated shoulder

Shoulder to sleeve, as flat as possible
Sleeves bigger, looser

Pants more narrow when openings are closed

LOOK 4



Vest redesign from suit

Fly Front inspired by corpus callosum, the part of brain that controls emotion

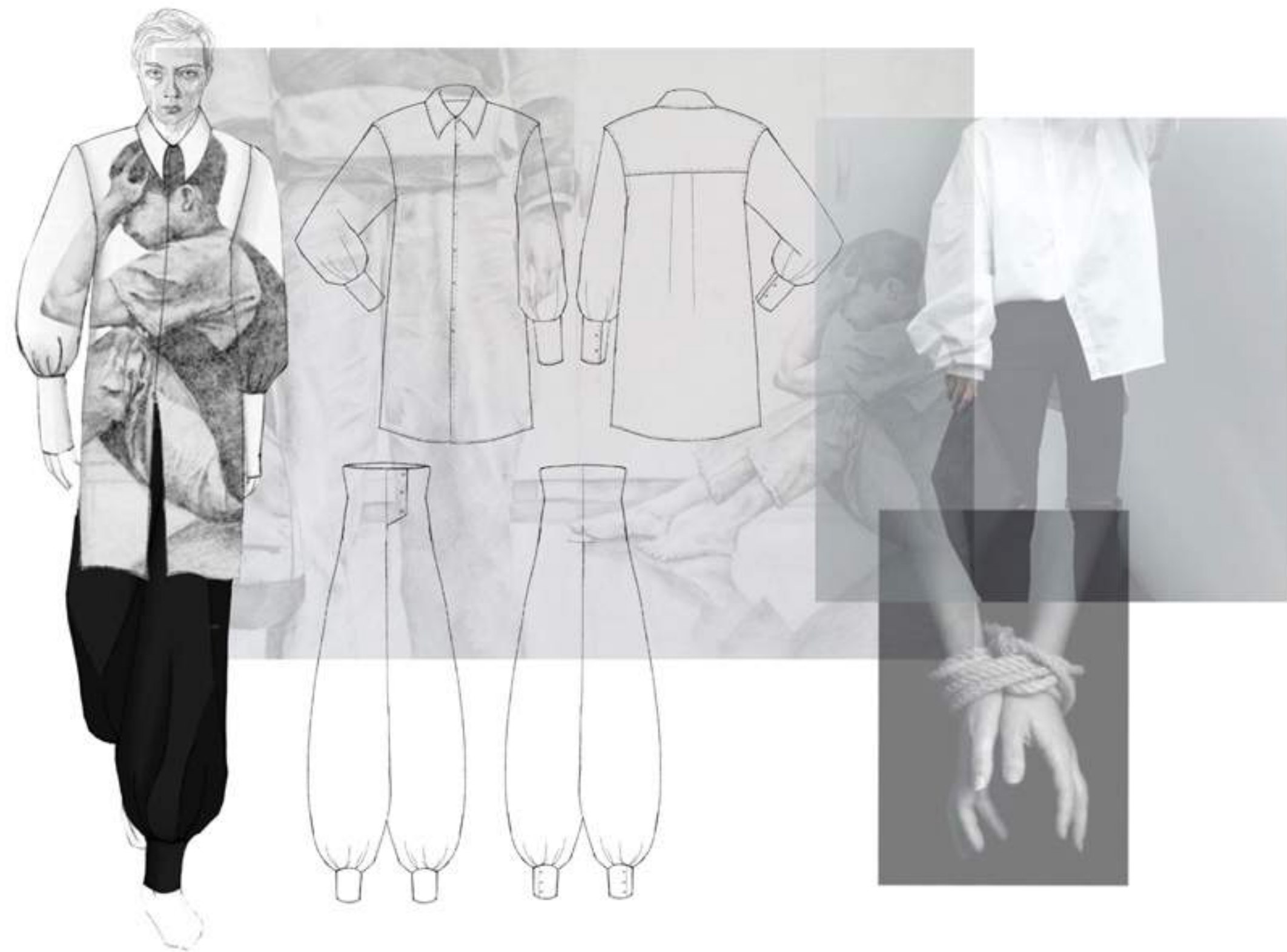
Sleeves much longer

Pocket with rounder edge and bigger in size

LOOK 5



LOOK 6



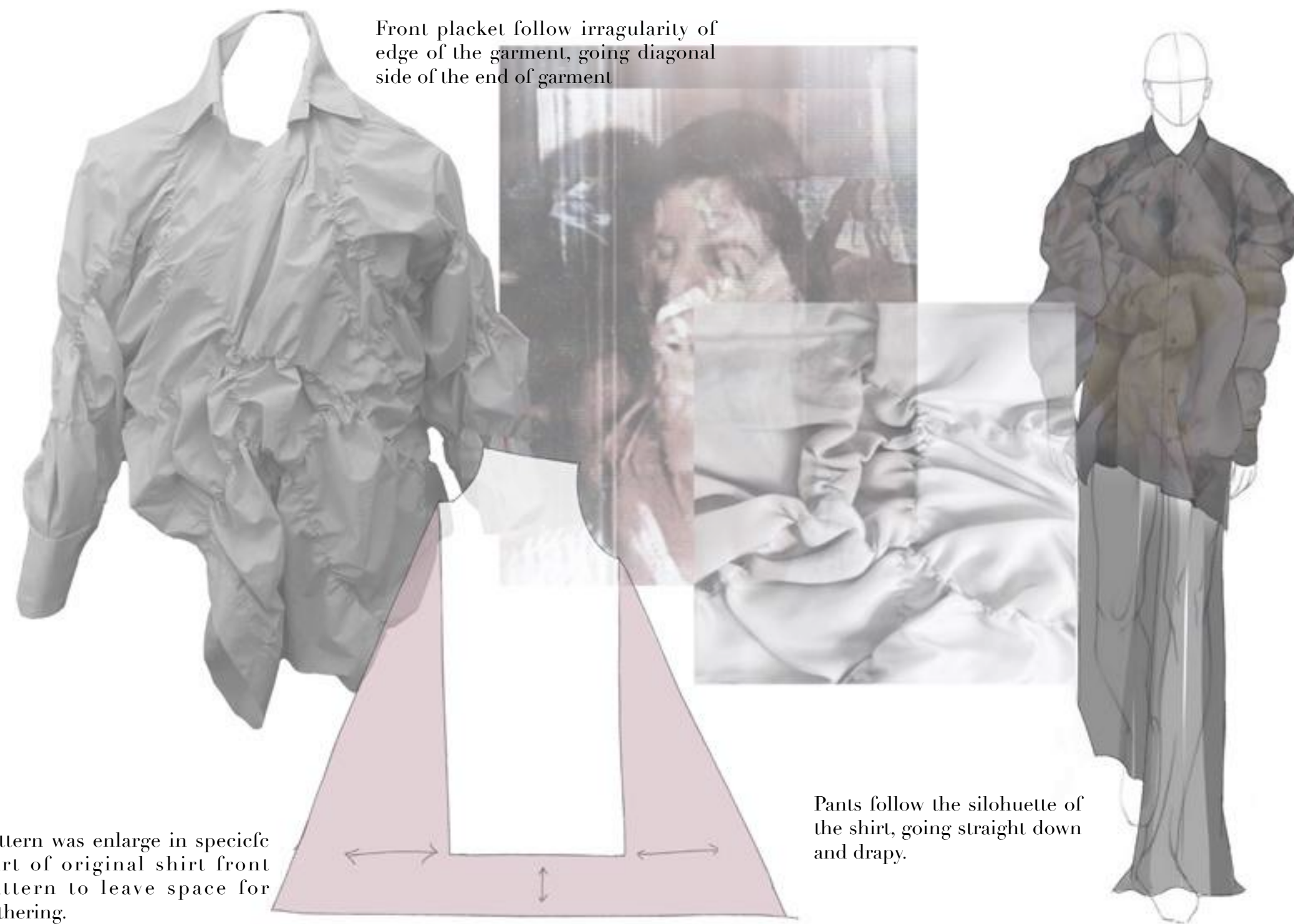
Double layer to show
different layer of self
(original)

Huomongous puffed
pants to match with
the puff sleeve

Higher waist to balance
the proportion of the
pants

Hand drawn on fabric to
recreate the mood of work.

LOOK 7



Front placket follow irregularity of edge of the garment, going diagonal side of the end of garment

Pattern was enlarge in specific part of original shirt front pattern to leave space for gathering.

Pants follow the silhouette of the shirt, going straight down and drapy.

LOOK 8



Increase size of back piece that the whole shirt doesn't swing back.



Bigger pleat to fit with oversize of the shirt.



Bigger in size of the pleats to create contrast of the sleeve and cuff.

Pearl made buttons can reflect from the multicolors of the shirt.