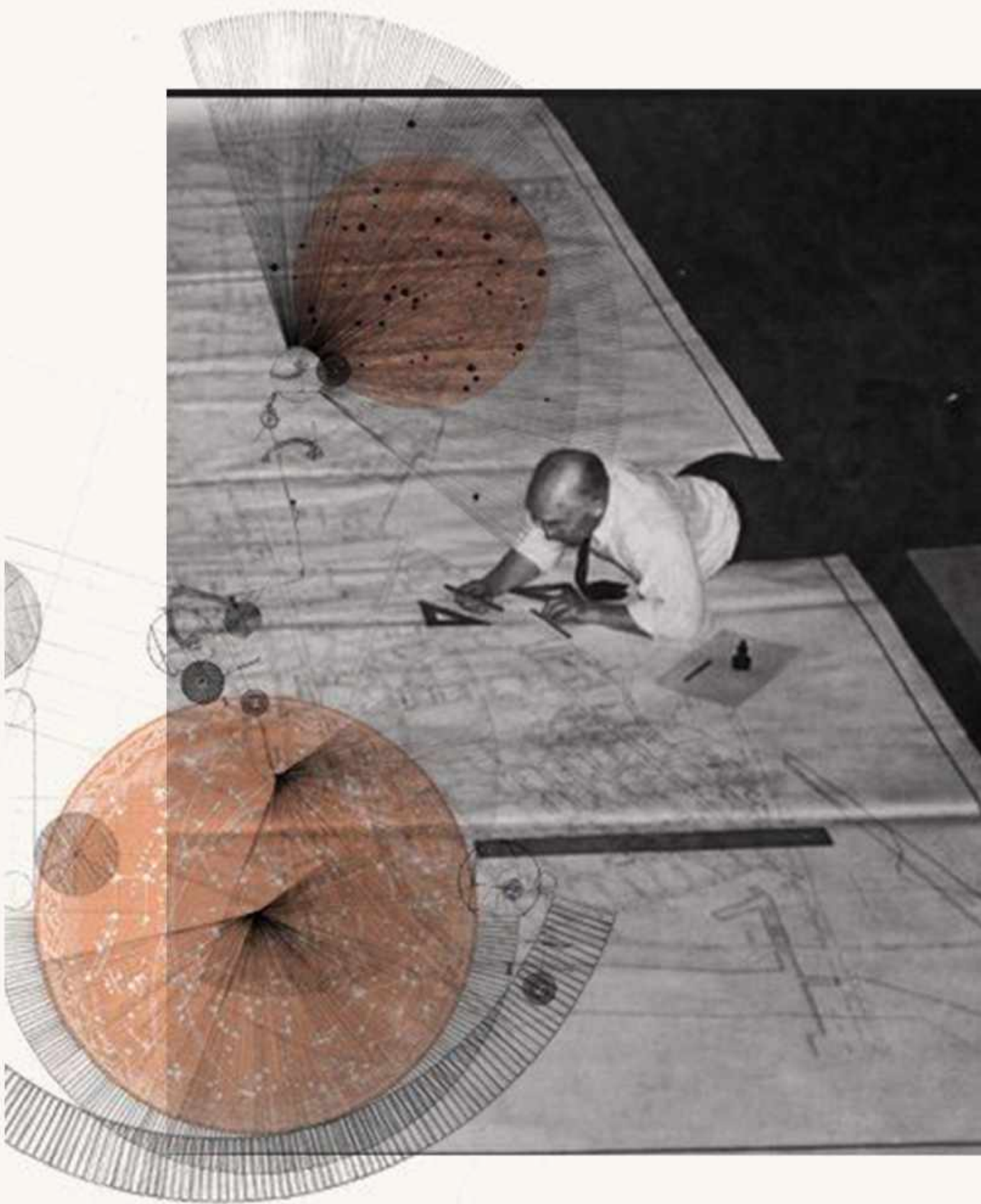




PLAY!

ASSOCIATED OBJECTS

CHUROU WANG



Meret Oppenheim | SWISS, BORN BERLIN. 1913–1985
 OBJECT [LE DÉJEUNER EN FOURRURE]. 1936
 FUR-COVERED CUP, SAUCER, AND SPOON; CUP, 4 1/4" (10.9 CM) IN DIAMETER; SAUCER, 9 1/4" (23.7 CM) IN DIAMETER; SPOON, 8" (20.2 CM) LONG, OVERALL HEIGHT 2 1/4" (7.3 CM)
 PURCHASE

At the beginning of the designing process, I was reading a book about Carl Auböck, the Austrian family studio which primarily dedicated to design sculptural yet functional brass products. The concept of most of their work involved this Objet Trouvé (found object) art style. I truly found pleasure in looking at their work. The work embodies a sense of humor that is almost innocent, but the functionality is so much connected with the profession. For example, my favorite piece of theirs, the nut-motif magnifying glass was designed for their architect clients.

Since then, I couldn't stop having these mind drifting ideas: I started with making a shirt just like how one fold an origami shirt, and soon after that it comes with pants to the look; what does a shirt/skirt will look like if it's been worn like a necklace; the candle wick is very similar to the stalk on the top of a beret, I made one and I burnt it; I created a set of sewing kit for travel based on the mechanism of the game Connect Four; toy started to become part of the theme as I also designed a bag which was inspired by the IKEA MULA toy.....

The "Play!" collection is composed of a series of the capsule, which all serves the purpose of looking at the object in a whimsical angle. The curiosity that comes from the association enables the viewers and the designers to explore. Meanwhile, the essence is remaining a child-like passion to allow oneself to drift their minds, playing.

BELOW:
 Custom Tea Trunk by *Louis Vuitton*

BOTTOM:
 Desktop Brush by *Carl Auböck*

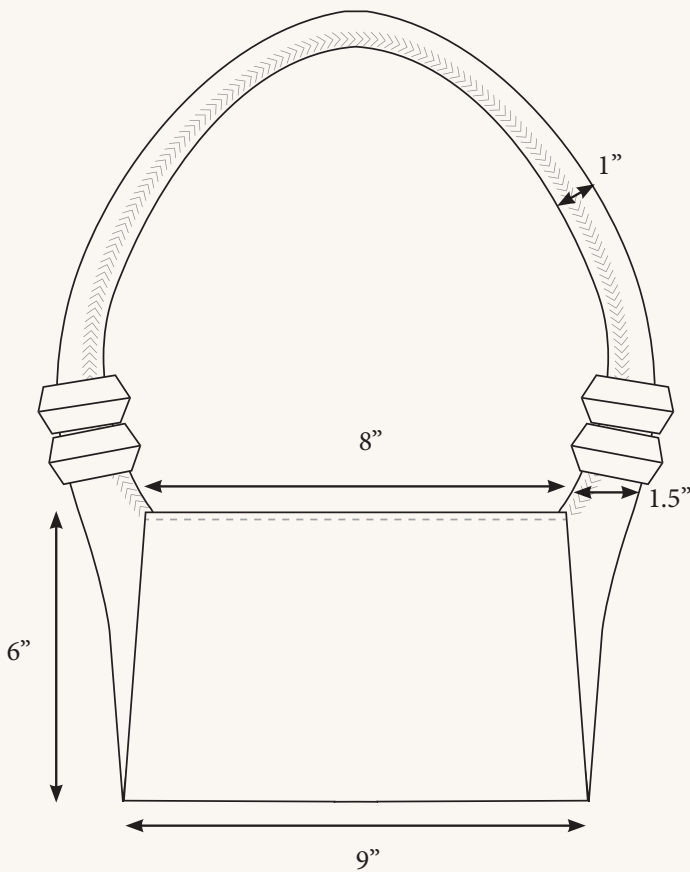
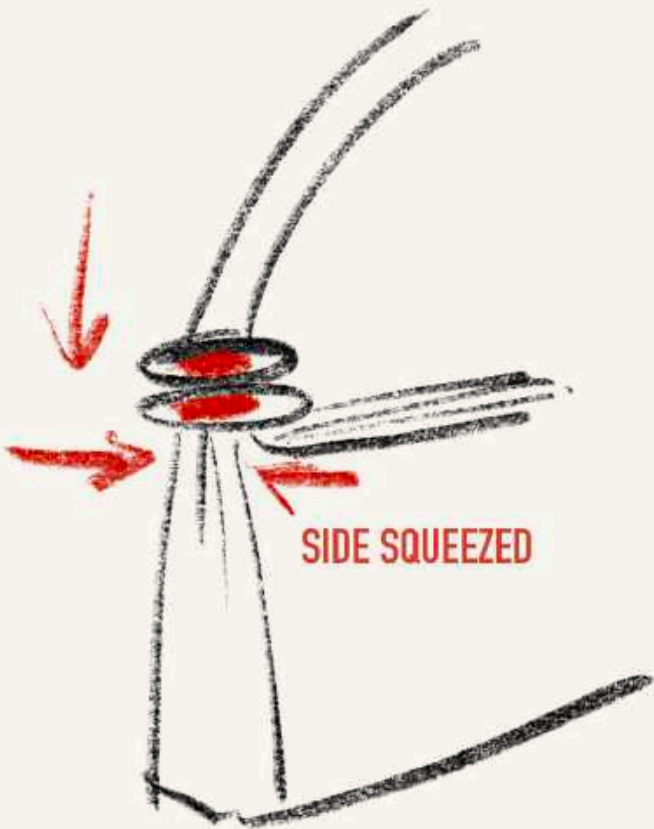


BELOW LEFT:
Roller Coaster Handbag (Final Product Detail)

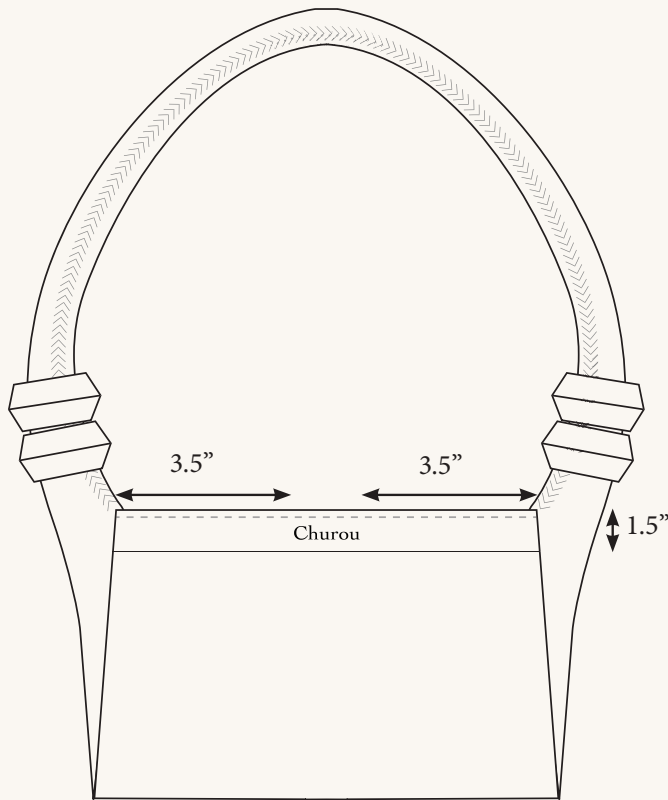
BELOW RIGHT:
Long Purse with Guilt Beads, France. late 18th c.



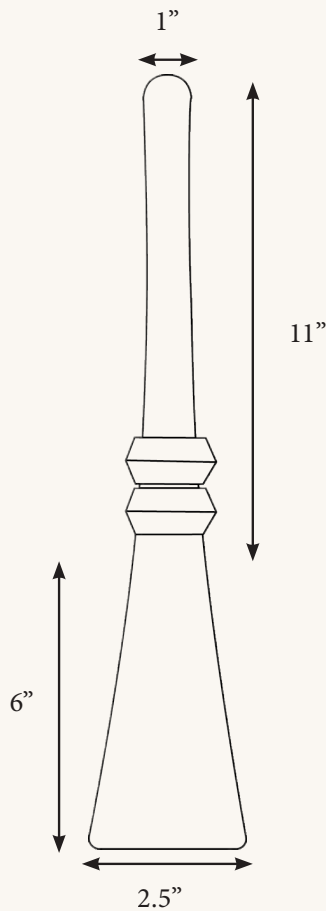
Inspired by the “**SLIDE-AND-SQUEEZ**” opening mechanism of long coin purse, the product which was in fashion during the late 18th century. This simple and deserted mechanism is adapted to the creation of ***Bead Roller Coaster Bag***. The bag earned its name from the nostalgic IKEA toy MULA the bead roller coaster, which was meant for pre-school education. The simple movement interaction with colored blocks seemed pointless, but a lot fun for the younger ones. As IKEA described the product, “**PLAY IS LEARNING FOR LIFE**”.



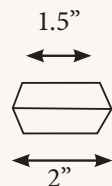
front view



inside view



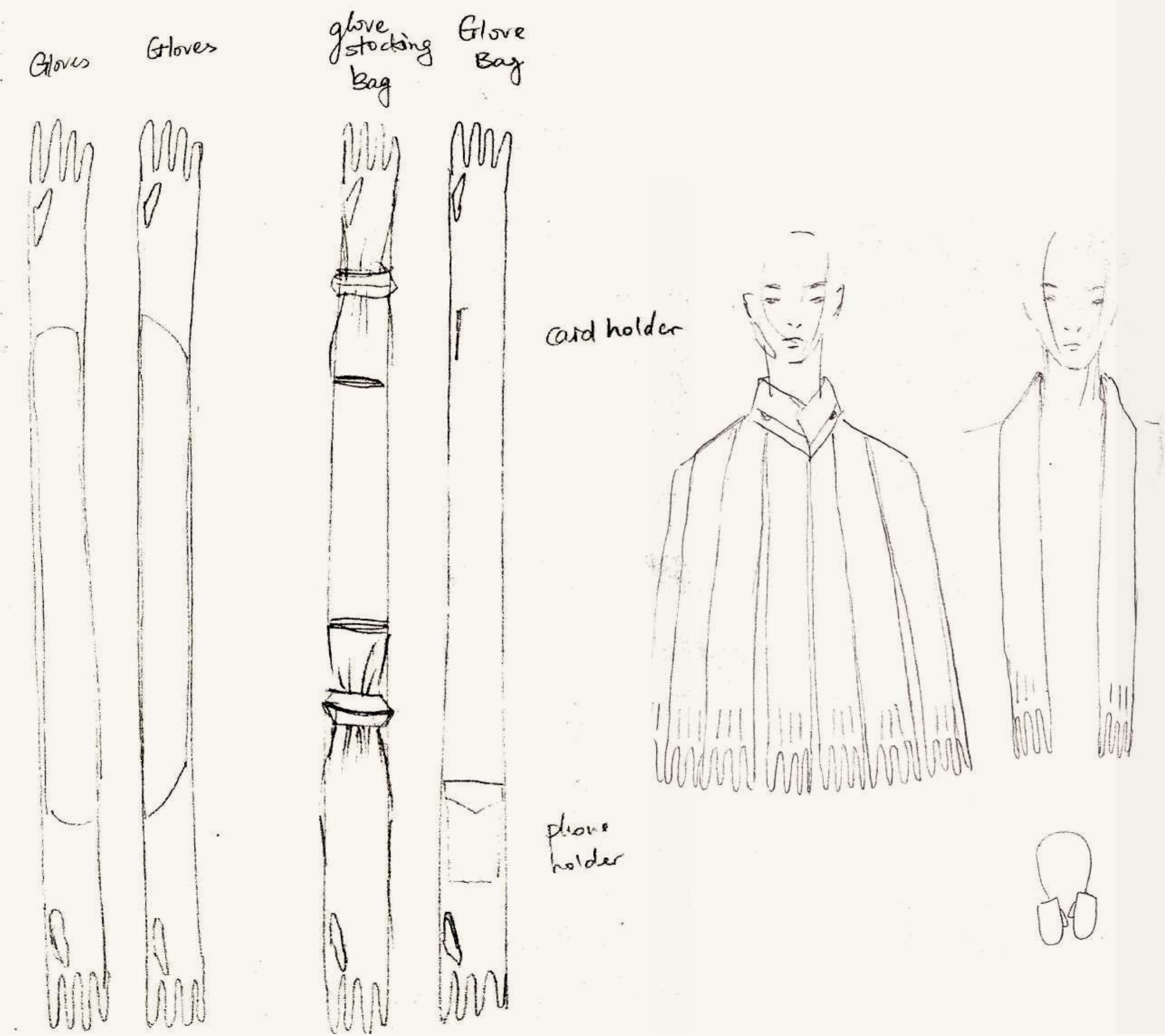
side view



hoop detail measurement

BELOW LEFT & MIDDLE:
Linked Leather Gloves Sketches

BELOW RIGHT:
Melting Beret



BELOW :
Beret Candle Melting Note

ON THE LEFT :
Beret Candle Melting Photo



ON THE LEFT:

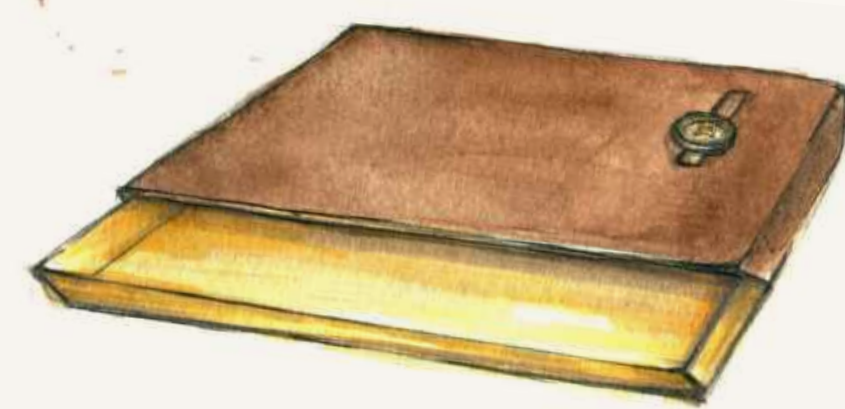
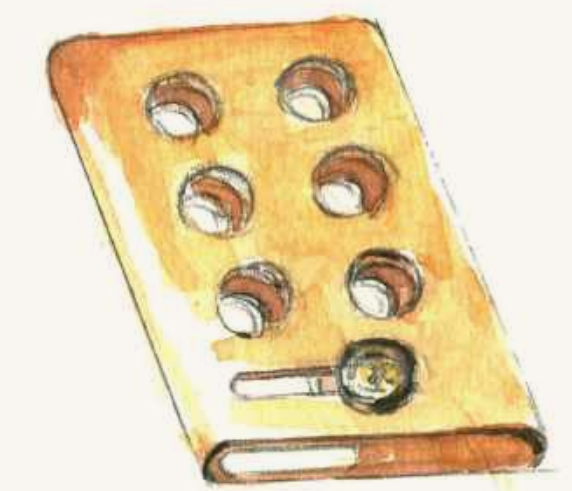
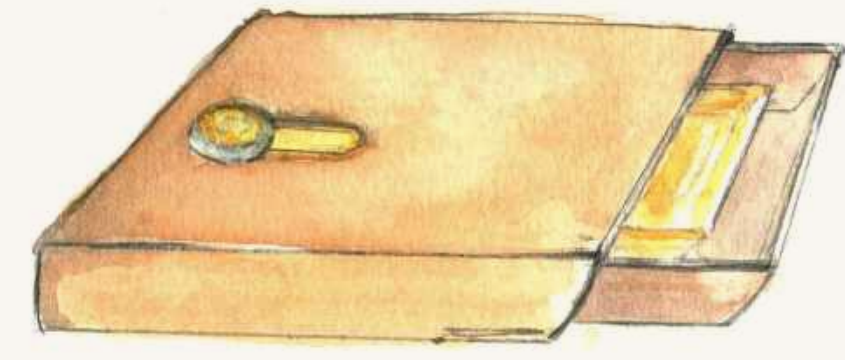
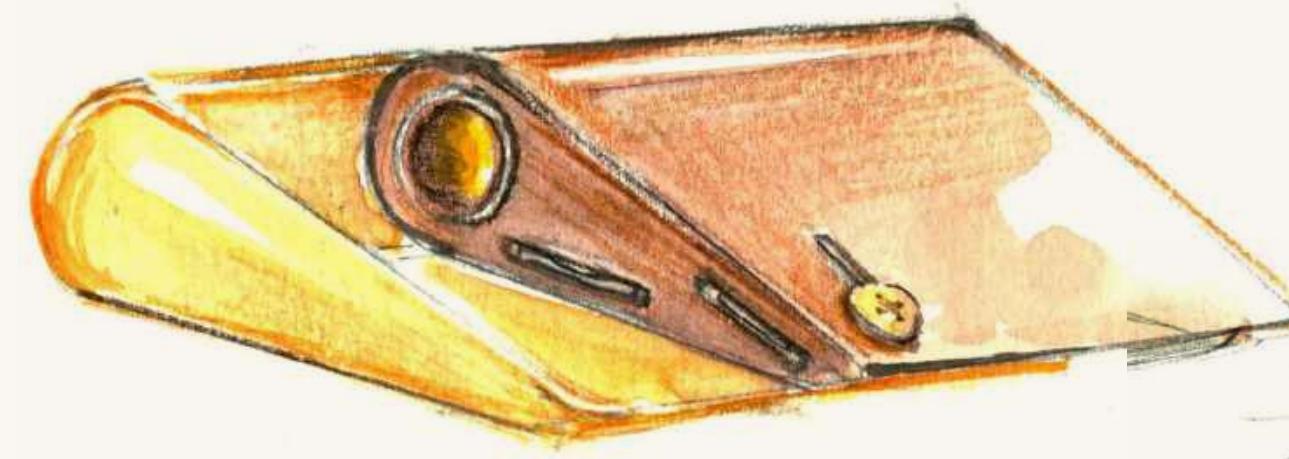
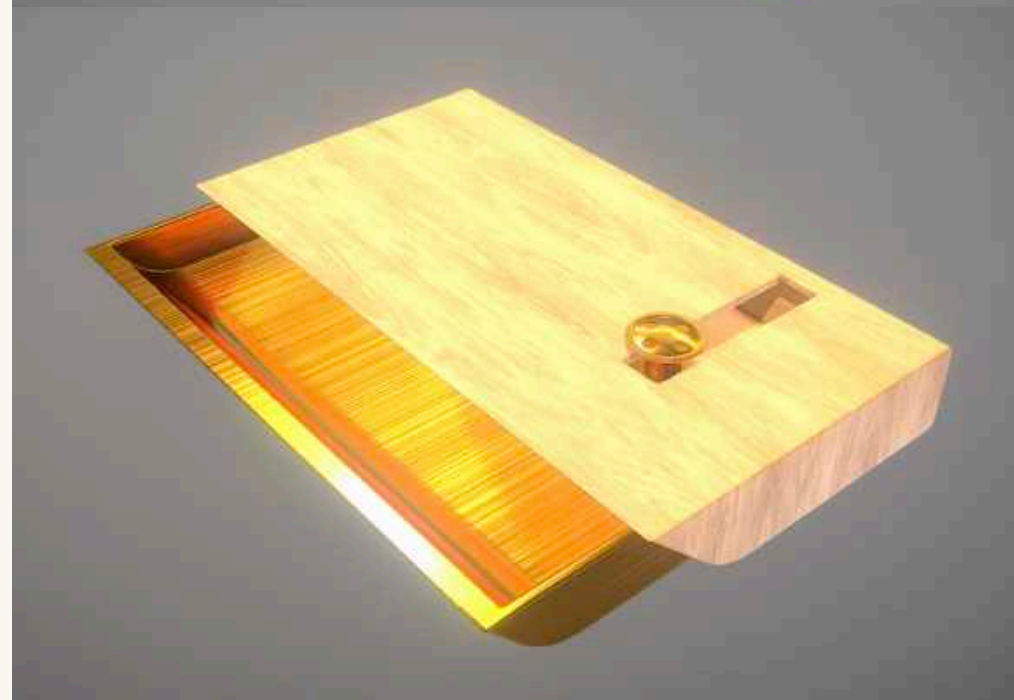
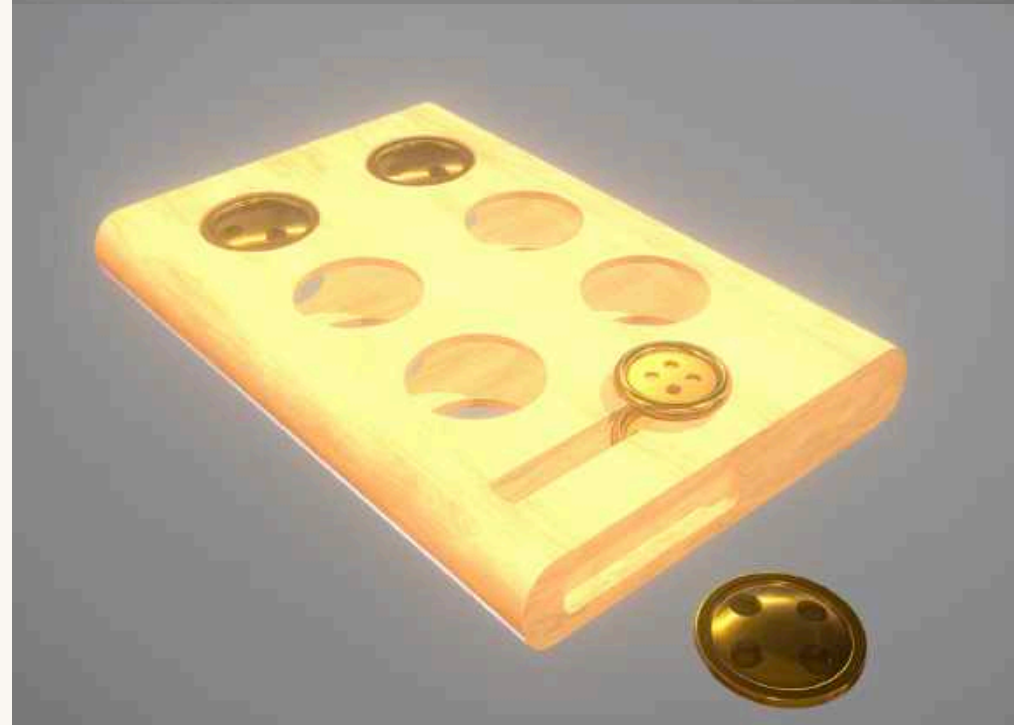
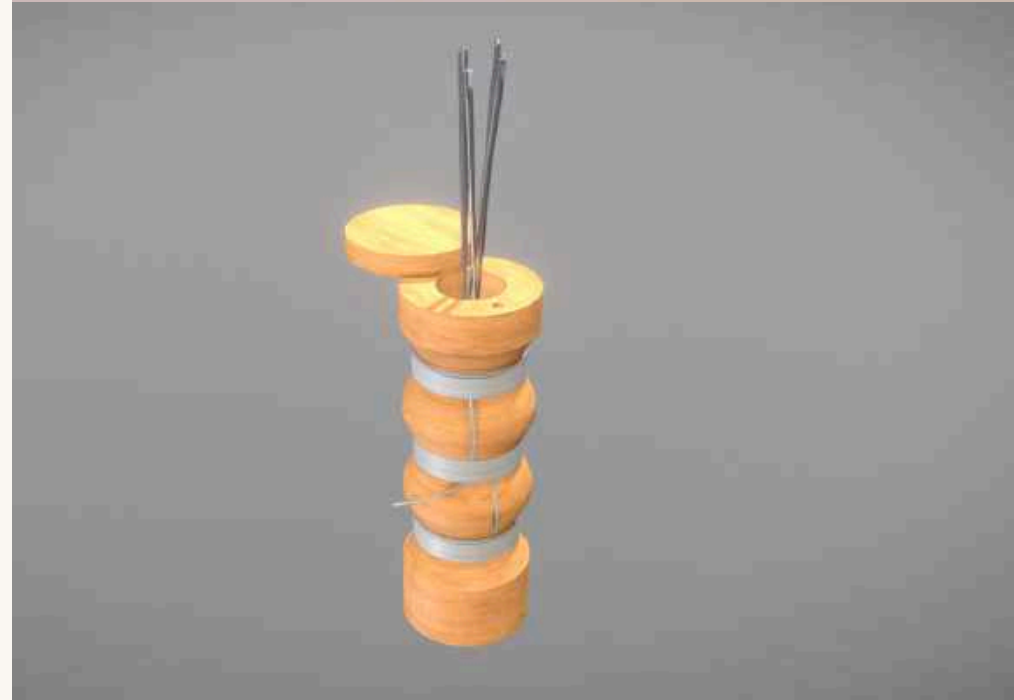
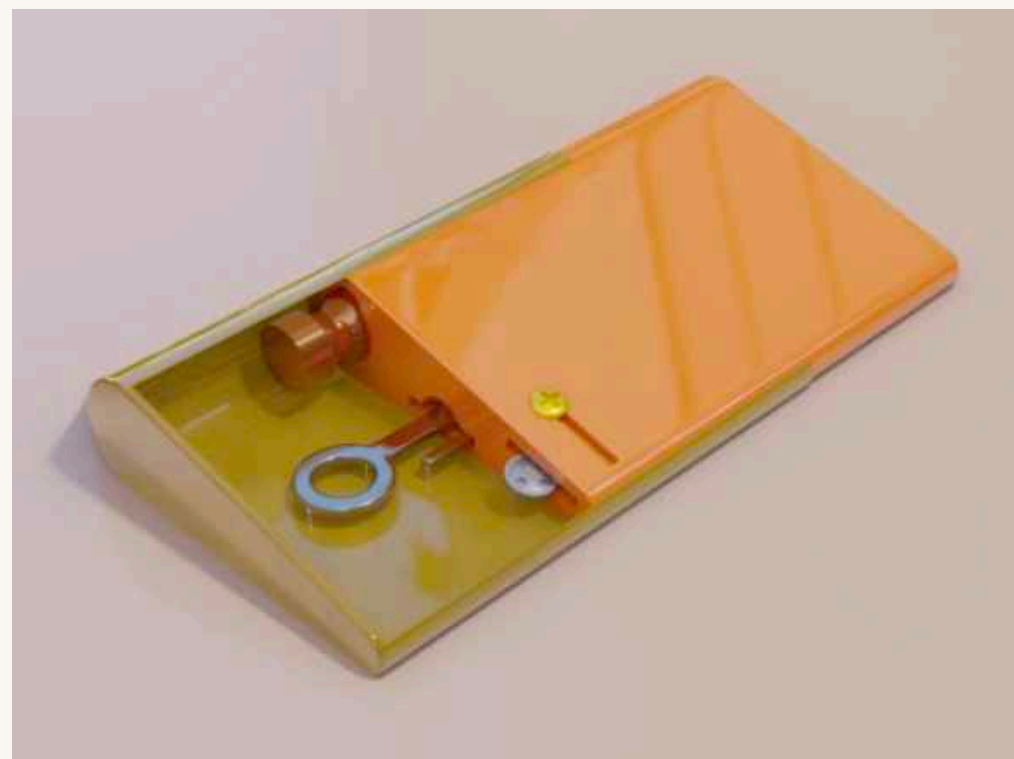
3D stimulation and Sketches of:

Sewing Kit

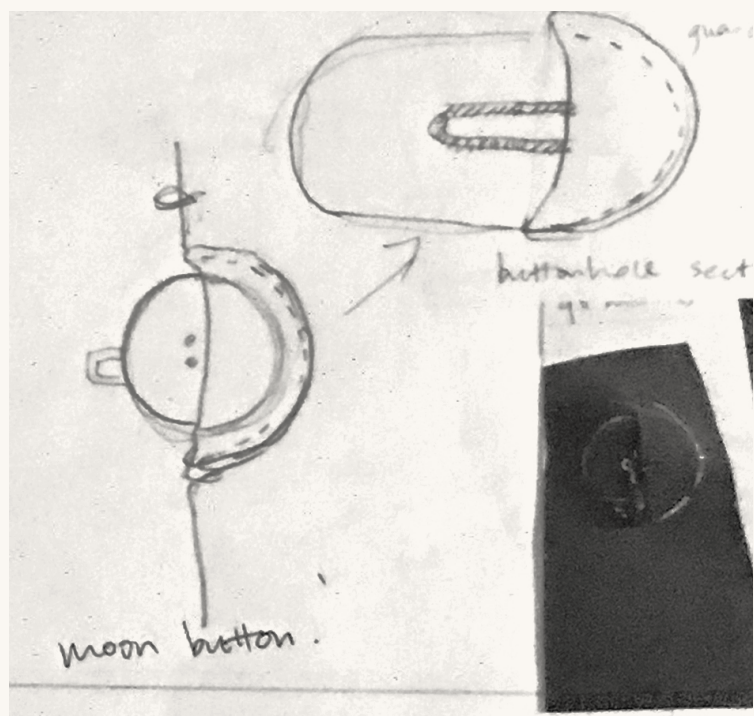
Needle-bobbin Case

Replacement Button Case

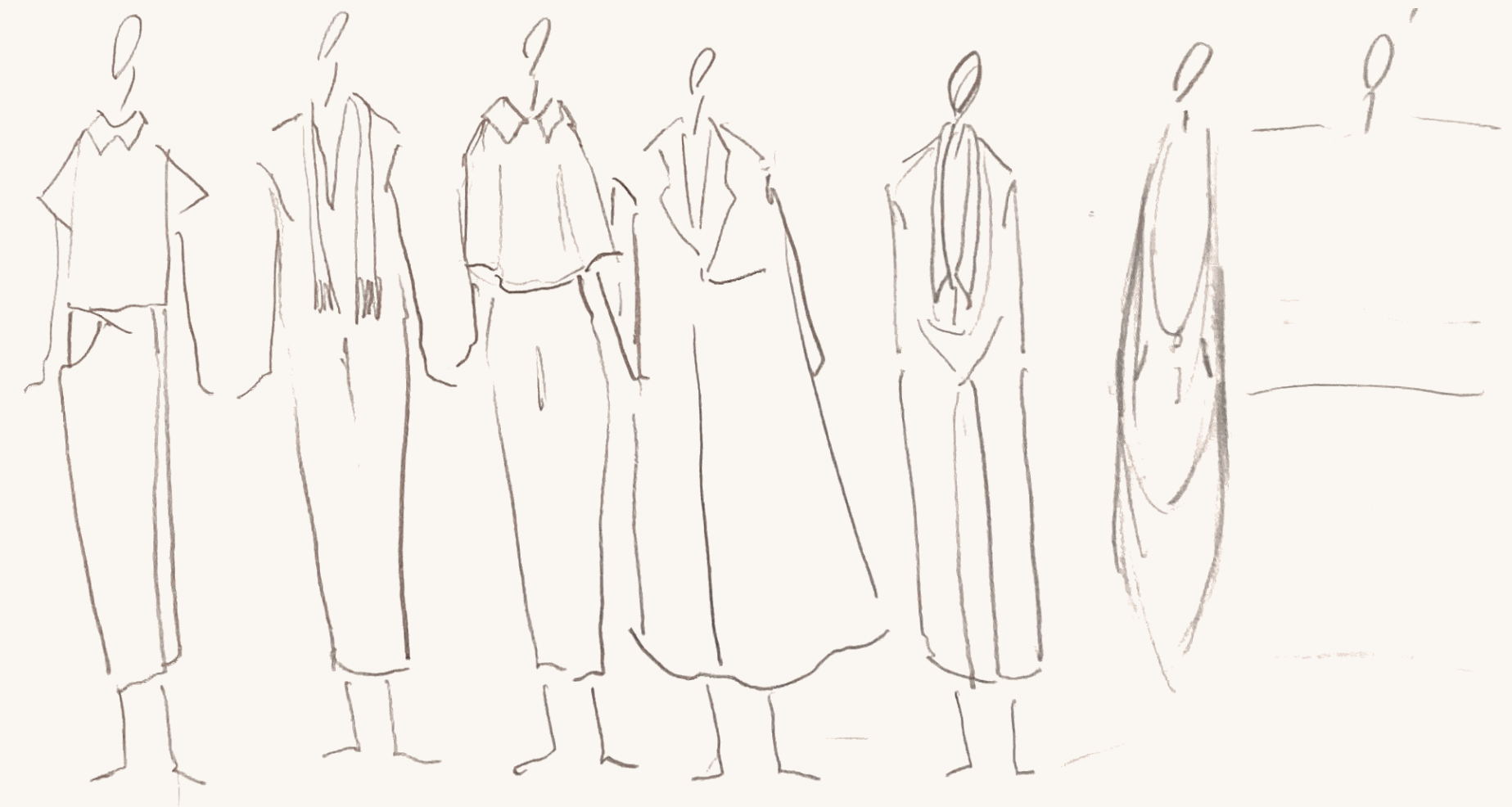
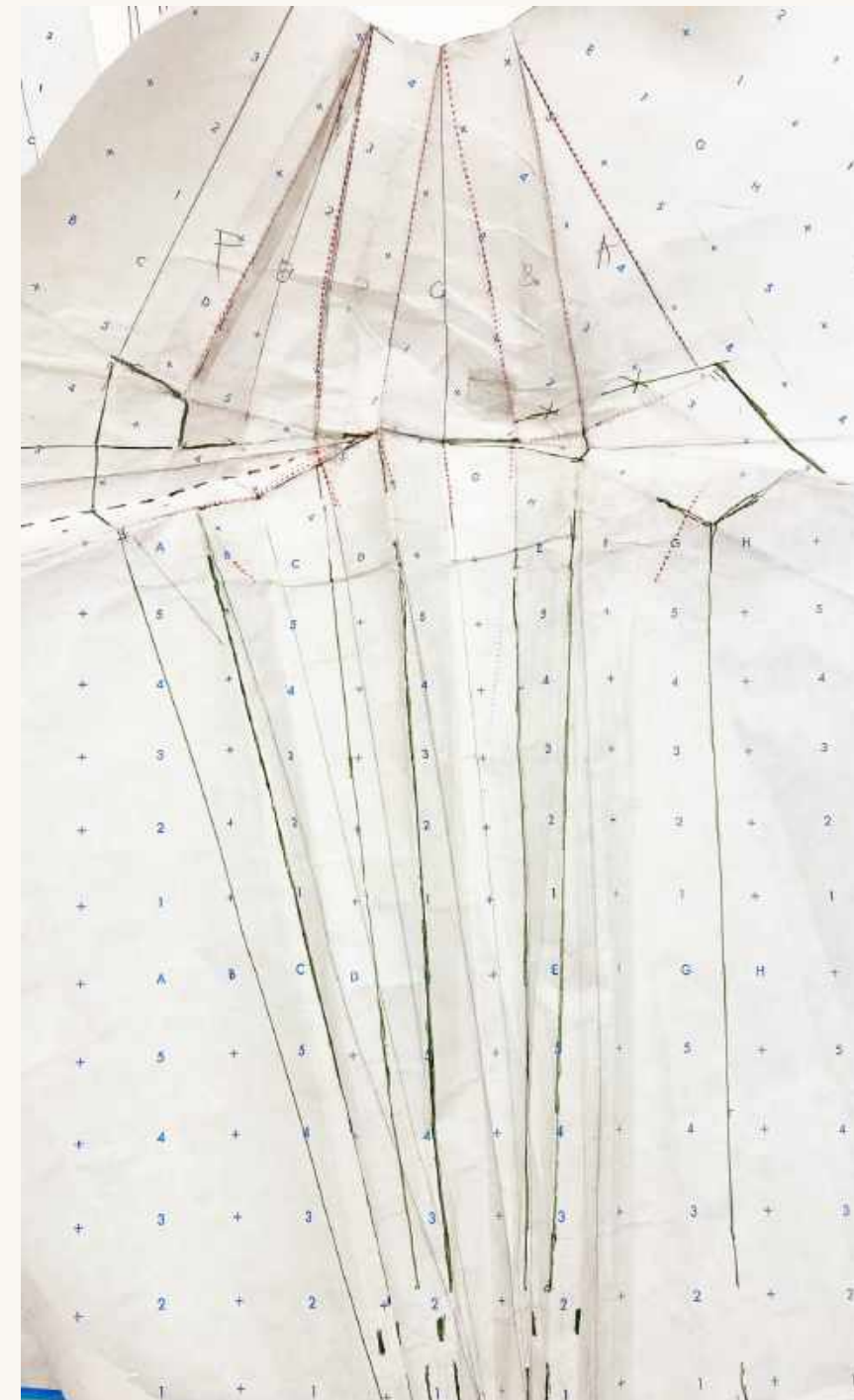
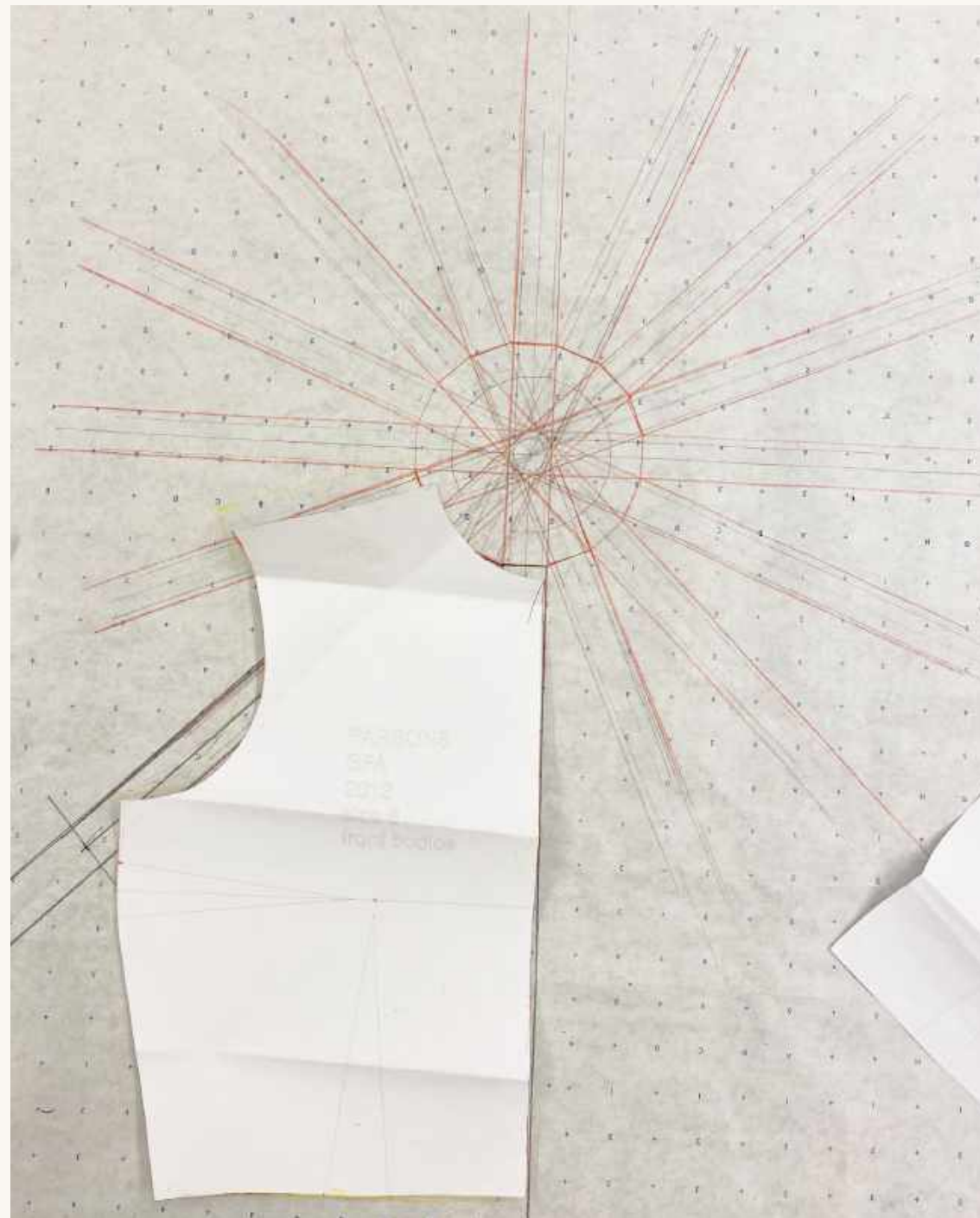
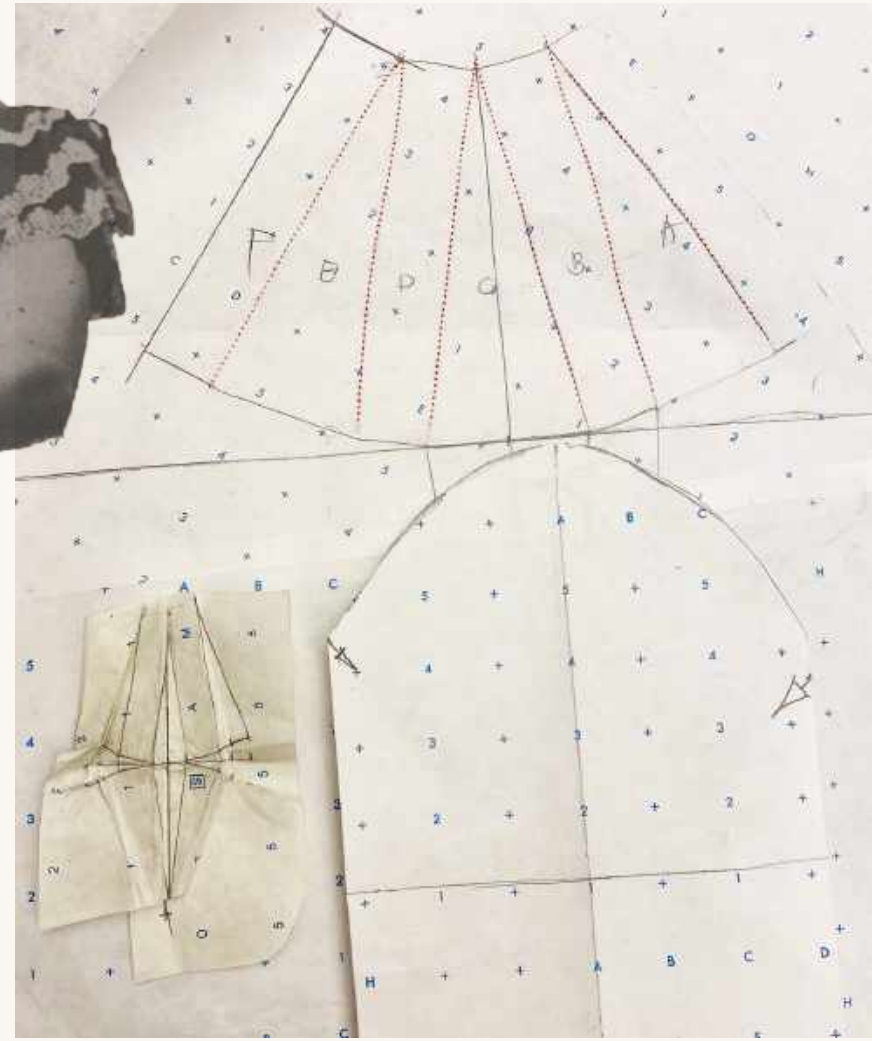
Card Case

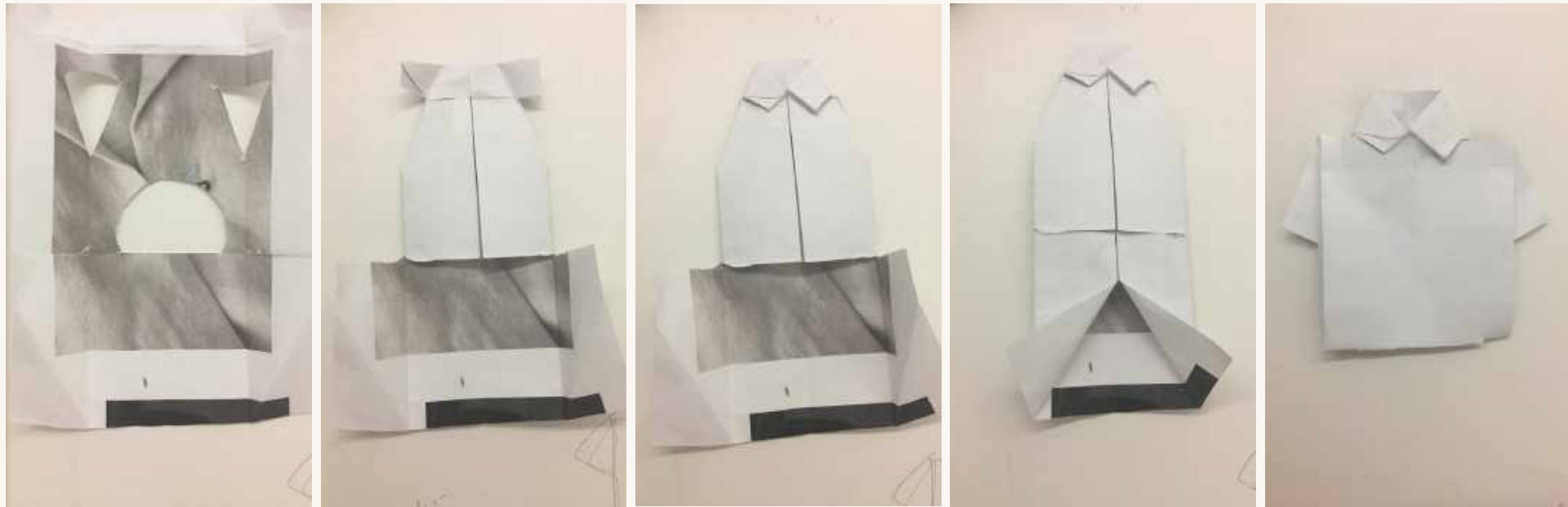




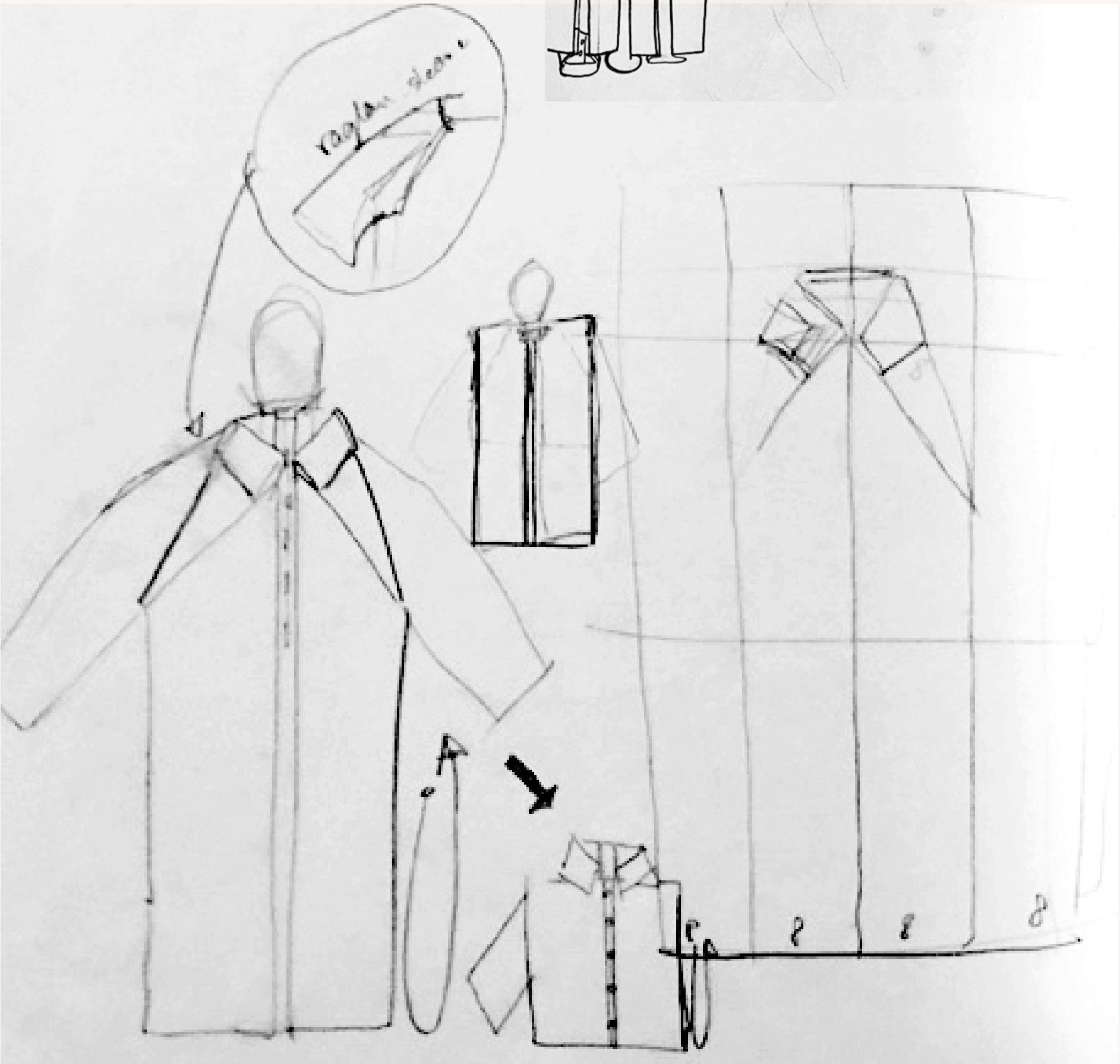
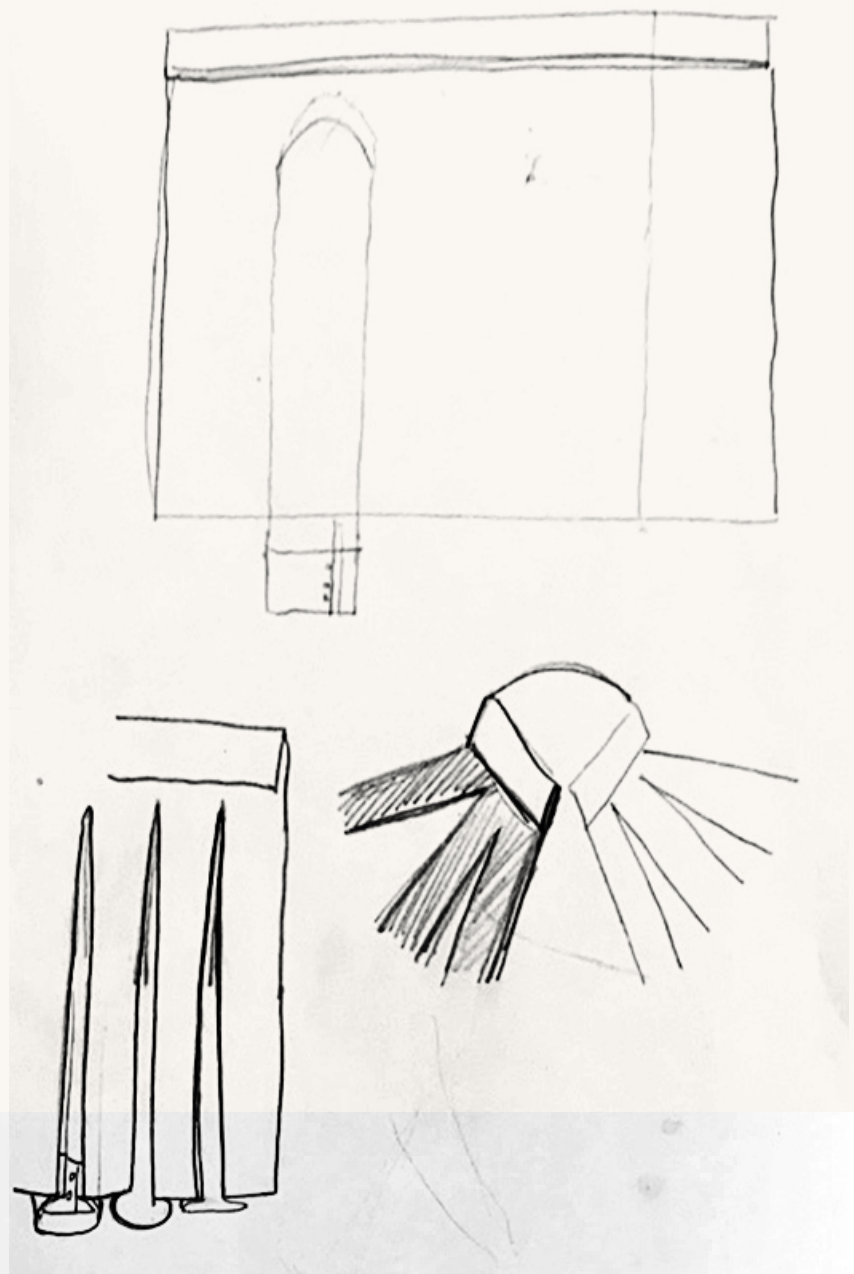
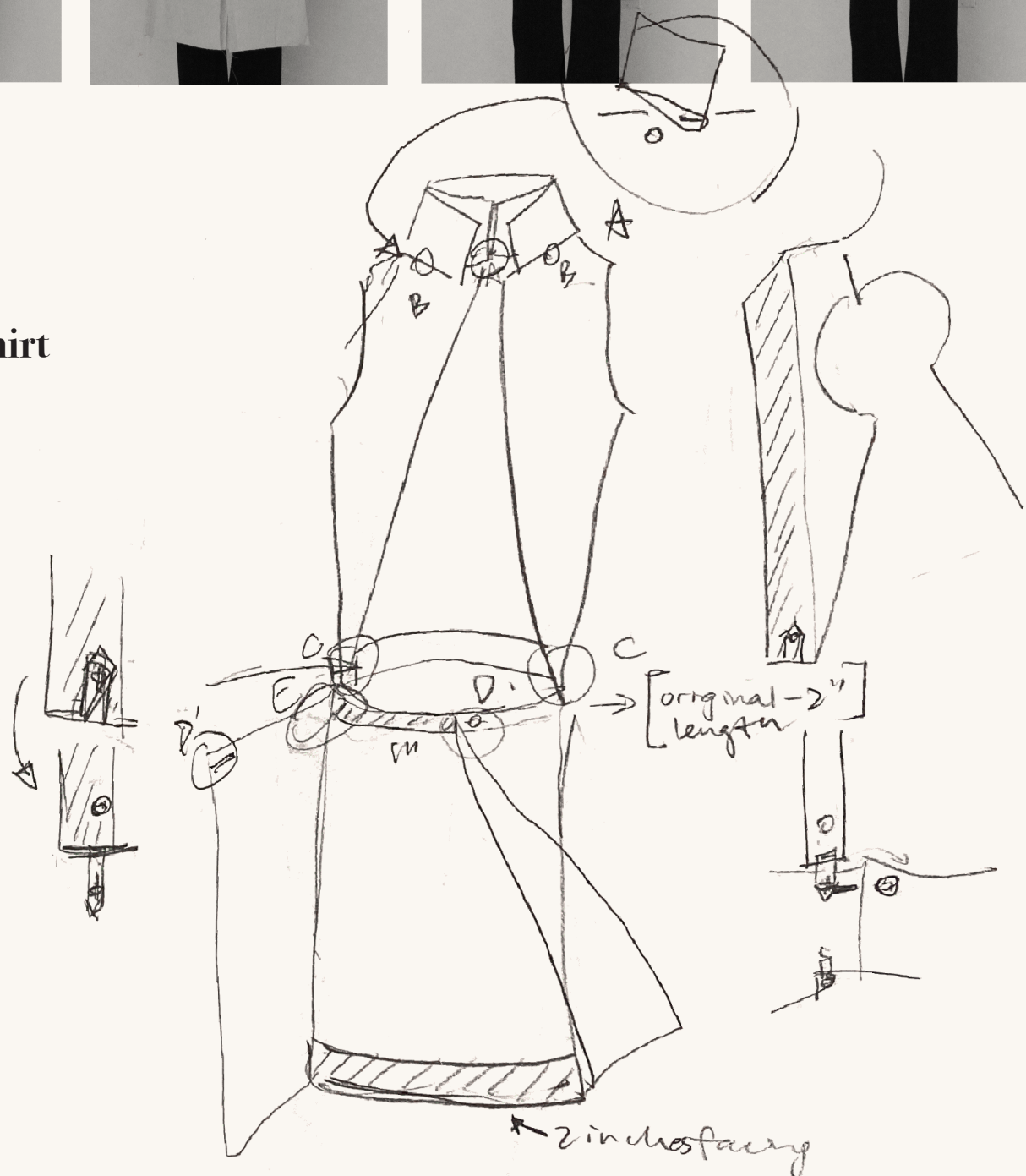


THE FOLDED PAPER
PATTERN PROCESS





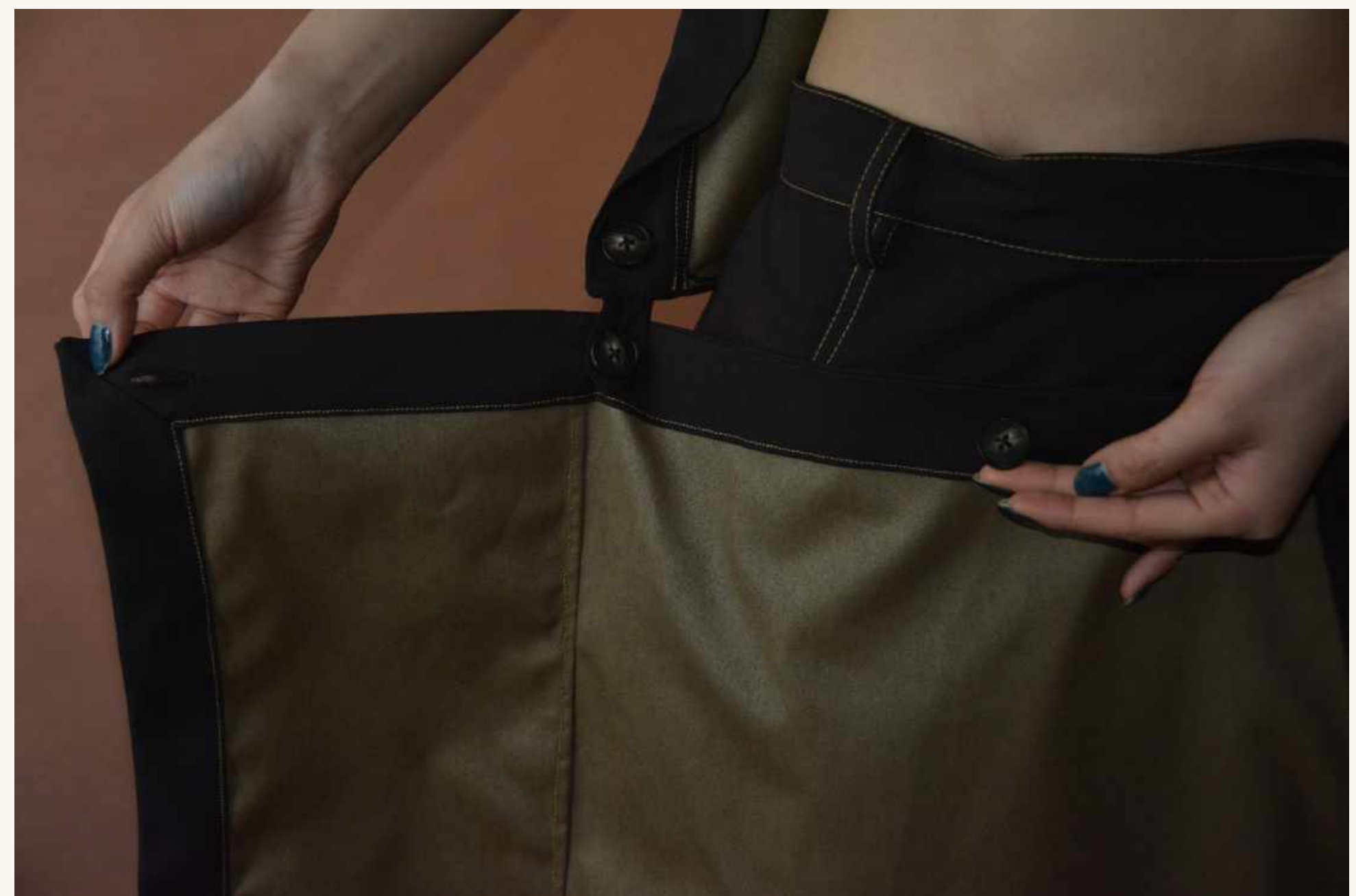
ABOVE:
 “The Folded Paper” Origami Shirt
 Wearing Process



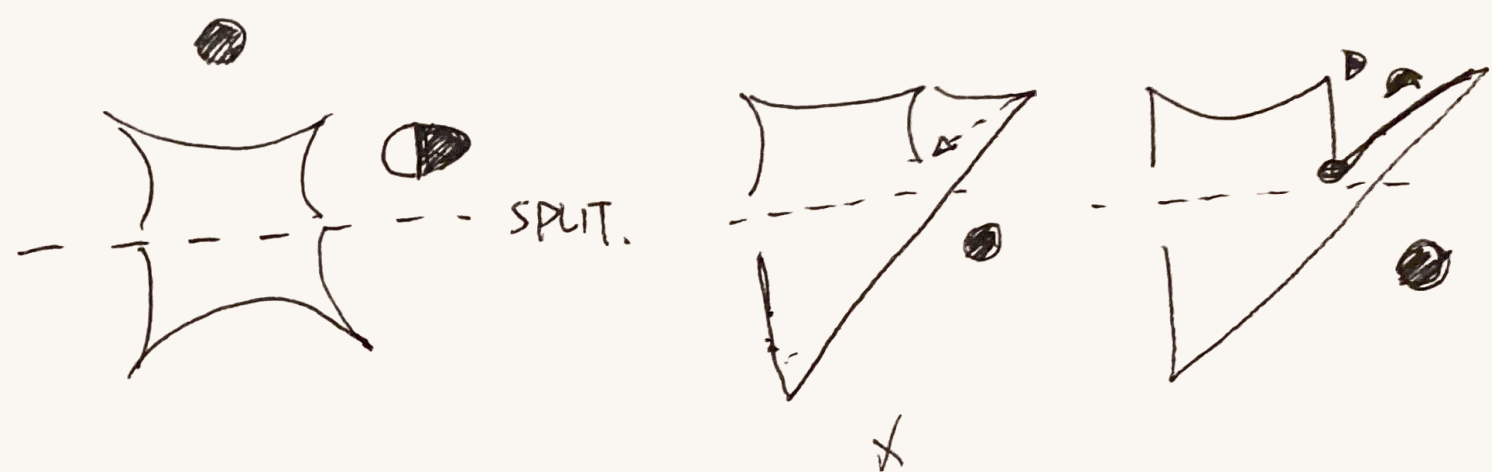
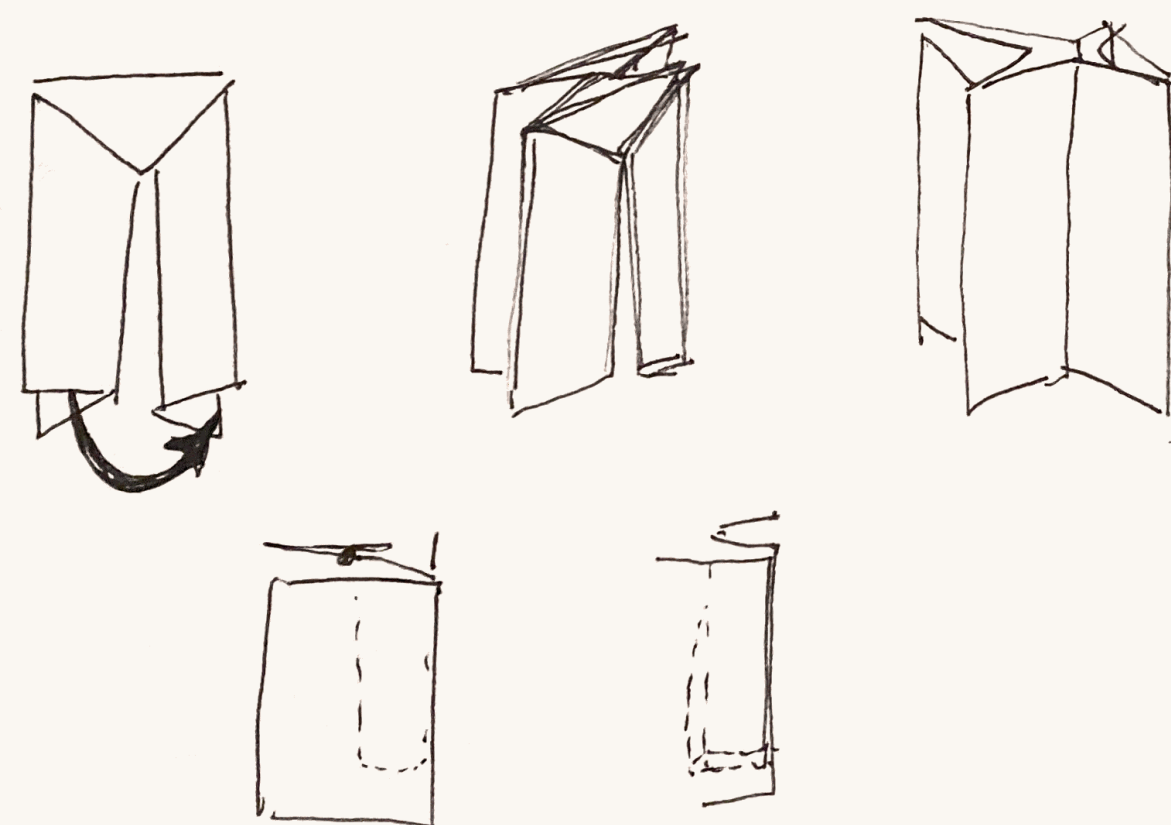


BELOW:

“The Folded Paper” Origami Shirt Detail
Final Product









Bella y Moshe Jabotzki, hermano de Kalman, junto a sus hijos Herta (izquierda) y Jacobo (derecha) en el Holocausto.

Kalman y Meri (1928).

