


Through the
Looking
Glass

THESIS COLLECTION

Yui Lee



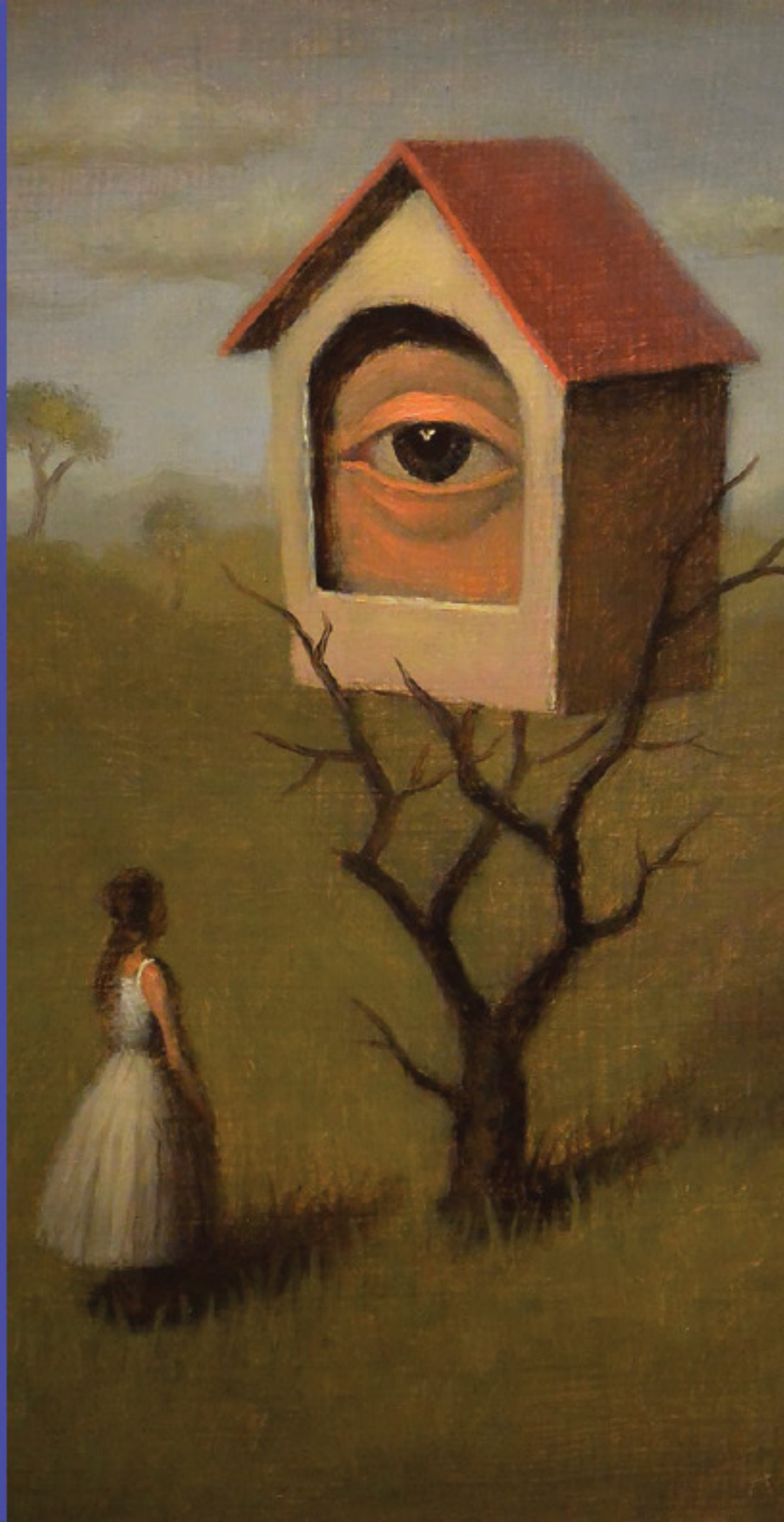


My project is about further analyzing my own personality and how other people see me from an external point of view. I always thought that my character is very intimidating and quiet, because I was often told I am reserved and seem to keep to myself. However, through the research about myself, I found out that to some people, I appear to them as friendly and bubbly and colorful. This contradicted my previous personal belief of what I thought I seemed to be and helped open my eyes.





social psychological concept called the Looking glass theory by Charles Cooley. It is described as, our reflection of how we think we appear to others. We develop ourselves through the judgement of others.



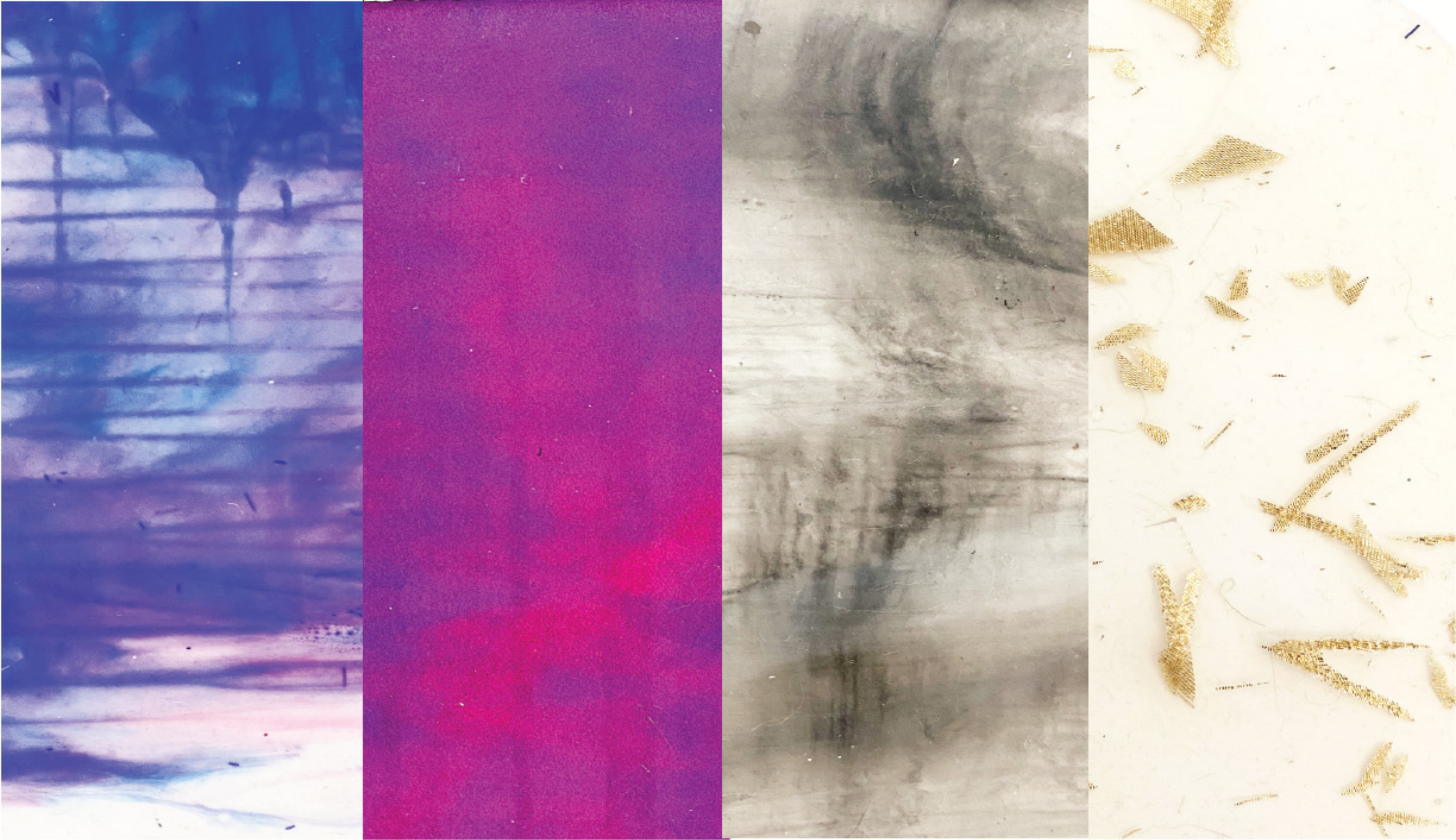




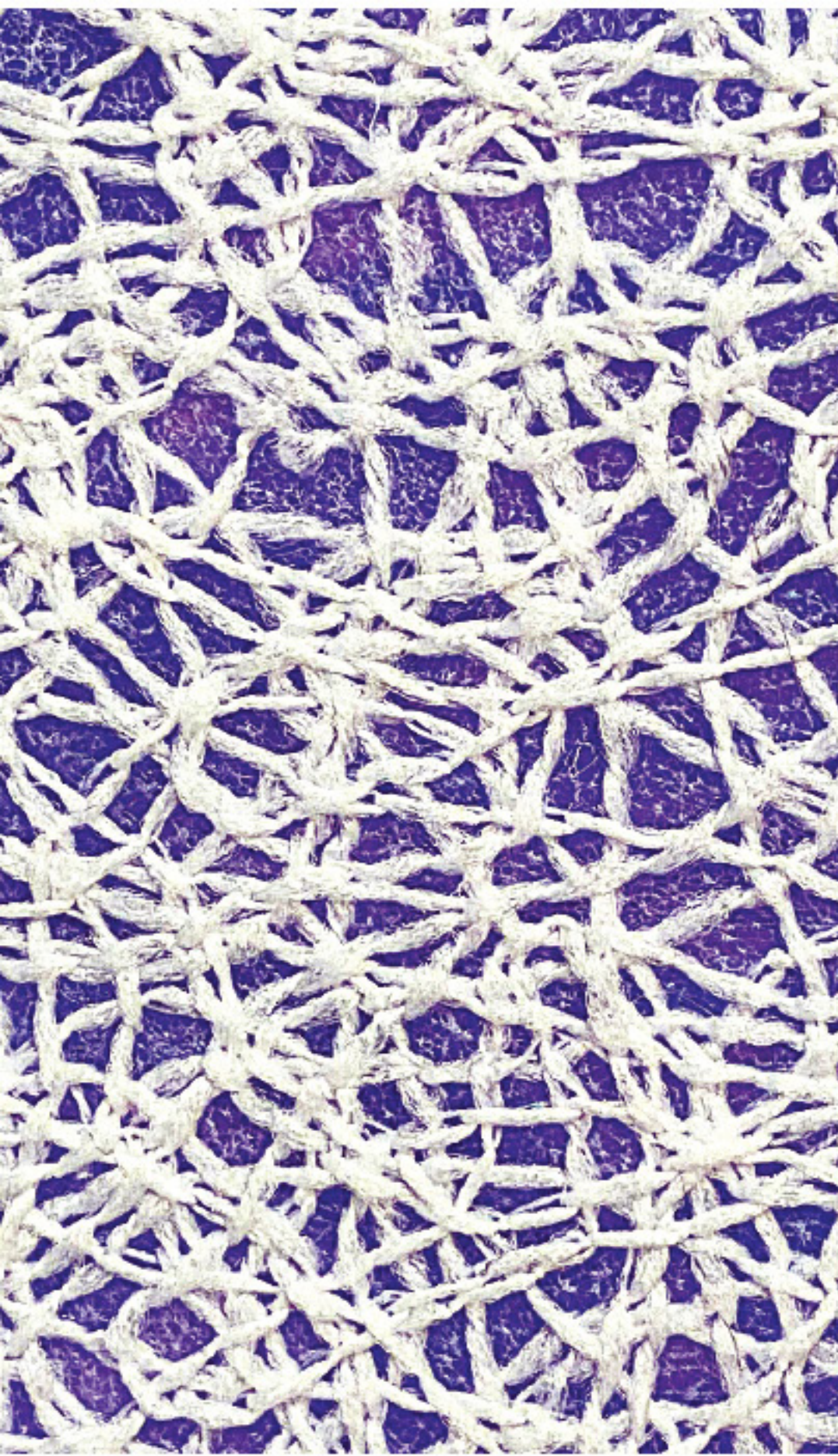
And **TEXTILE EXPLORATION**

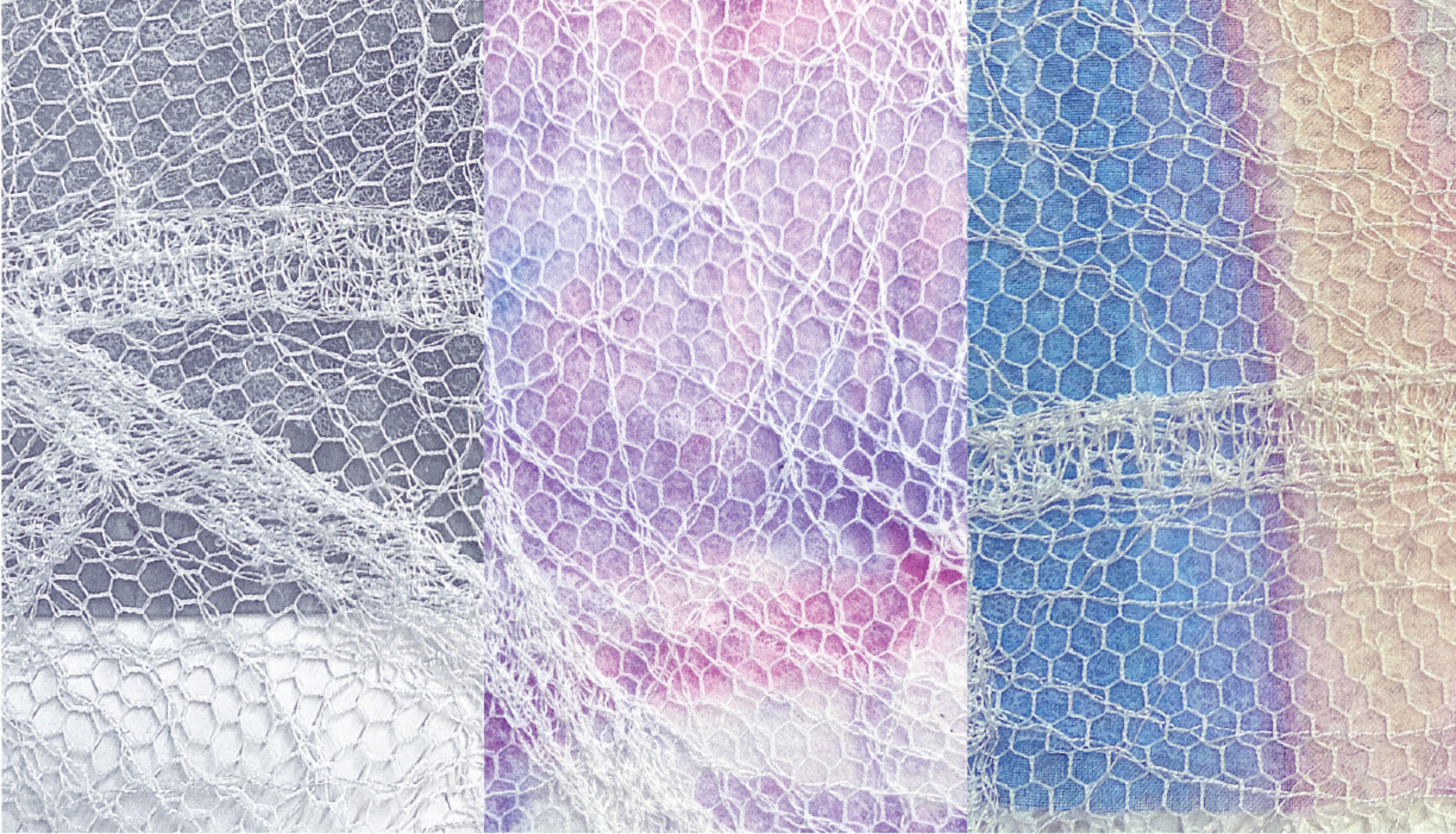
Slime adapts to the environment which is similar to how people viewed me as I am able to adapt to what's around me and get along with others well.

Their somewhat transparency with colors makes them more easily approachable which is how people viewed me.



Silicon with fabric colors

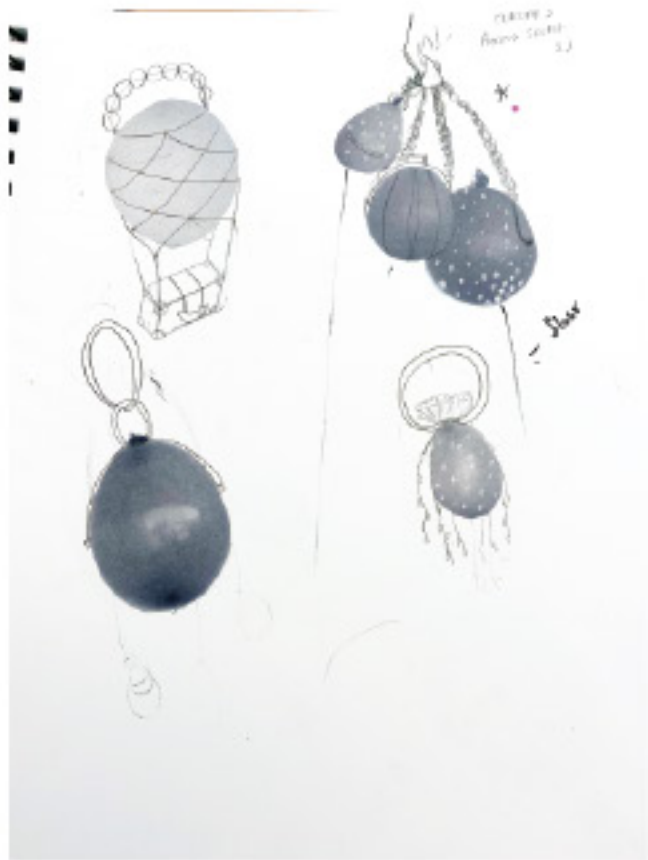
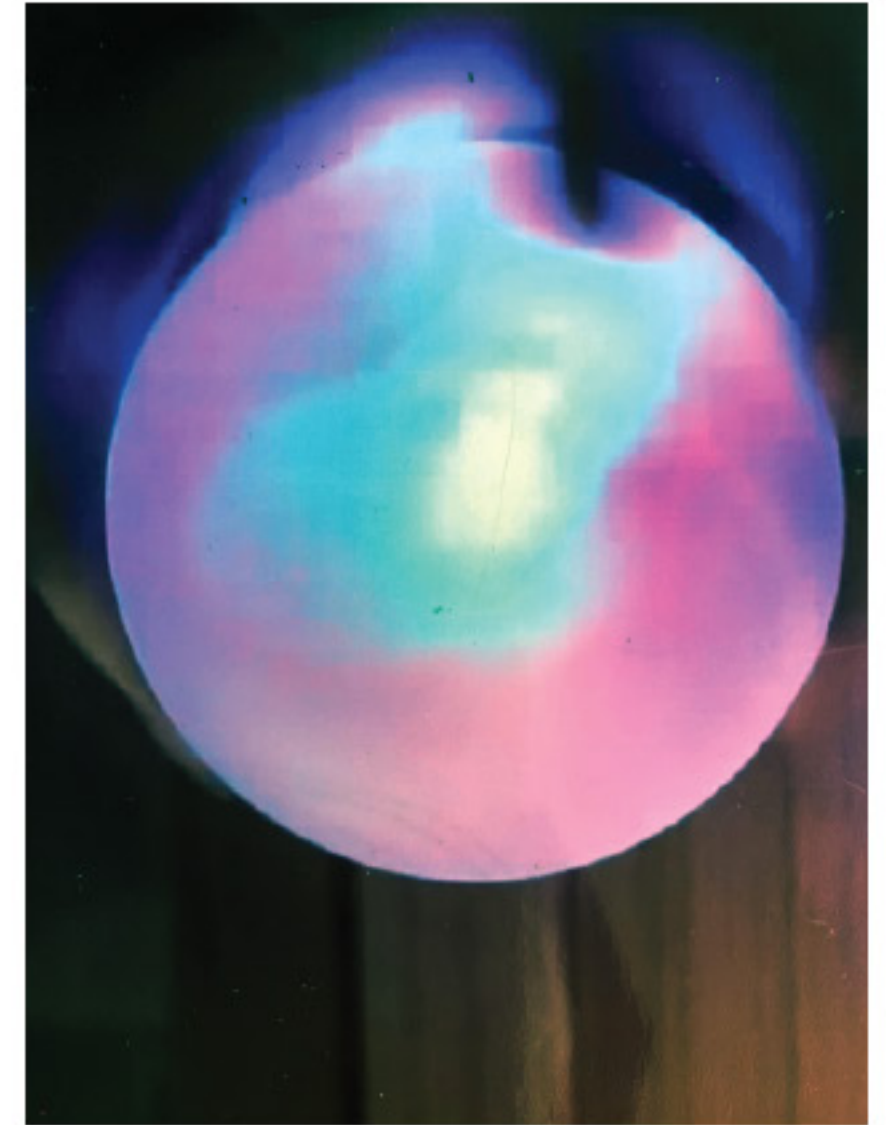
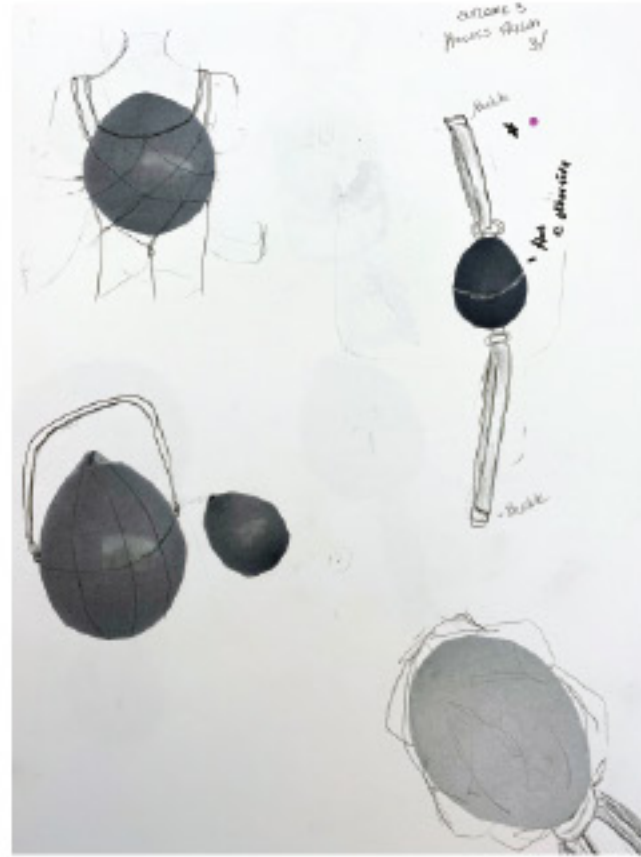
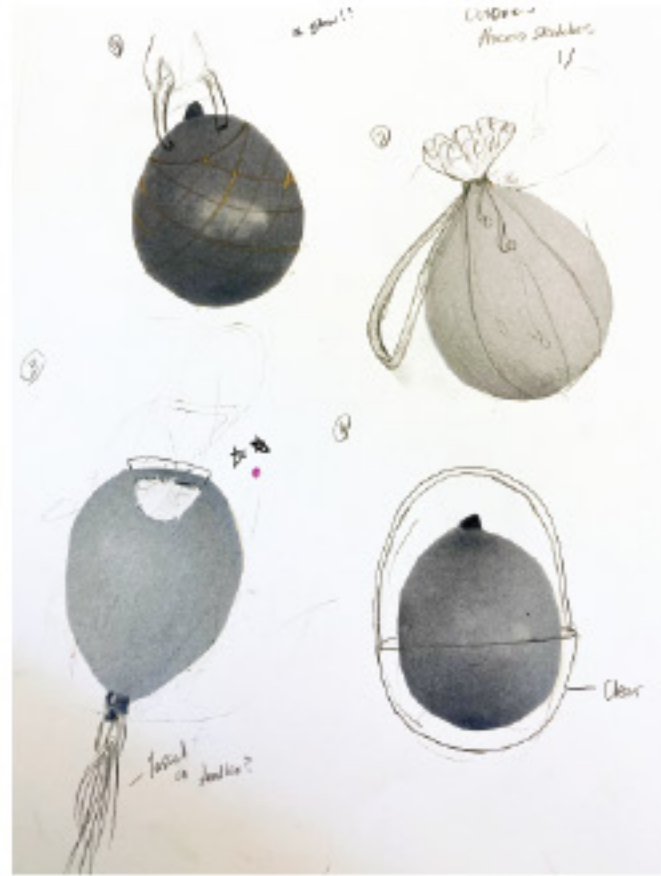




Silicon fushed with lace and printed fabric



Cherry Blossom Dream
BAG DESIGN



Light up ballon bag
 - LED lights
 - Battery
 - Organza lining
 - Vinyl / Thermal Plastic
 as base



First, we imagine how we must appear to others.



COLLAPSIBLE SHIRT



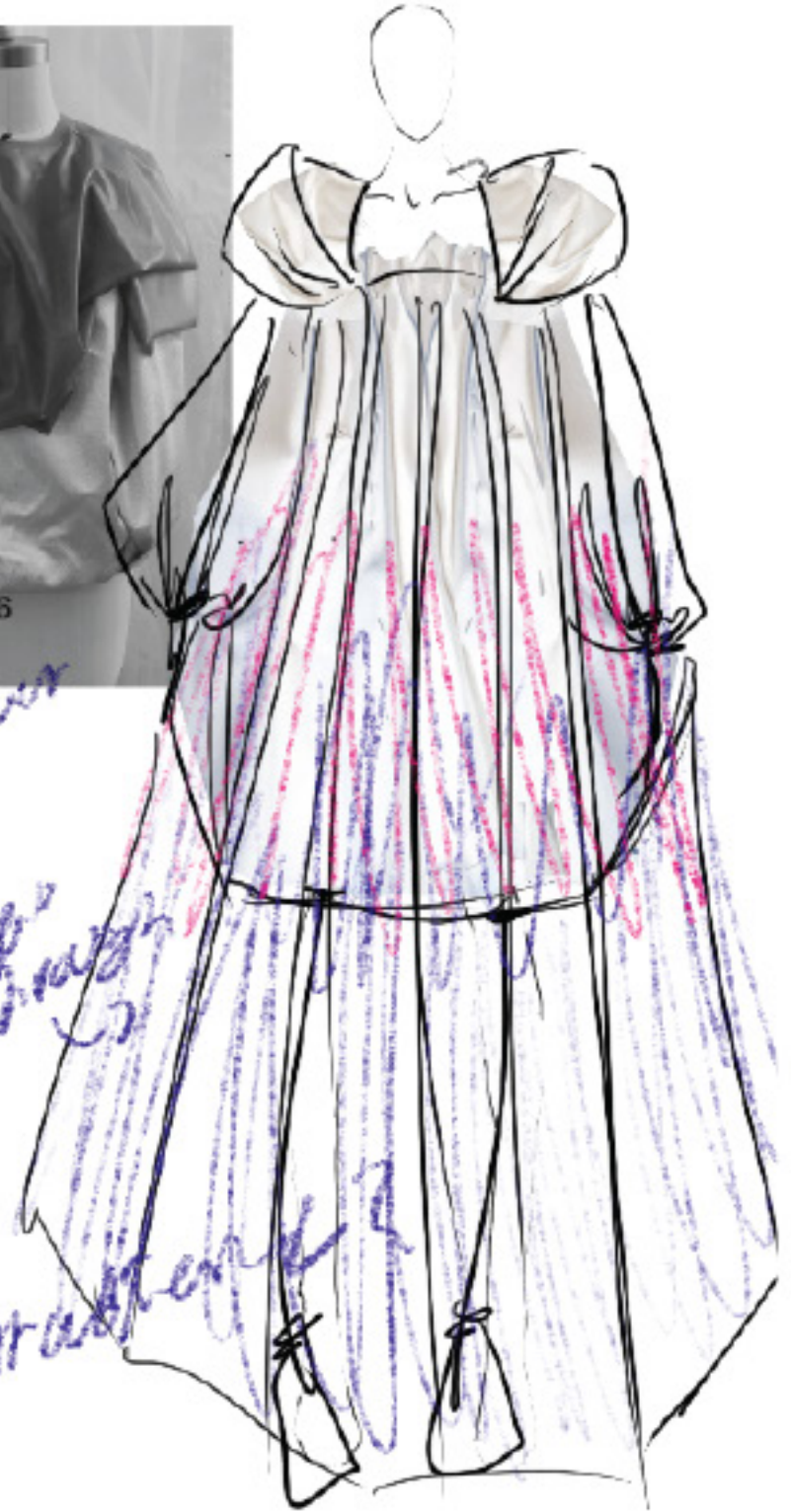
Optimizing
Separation



Case?

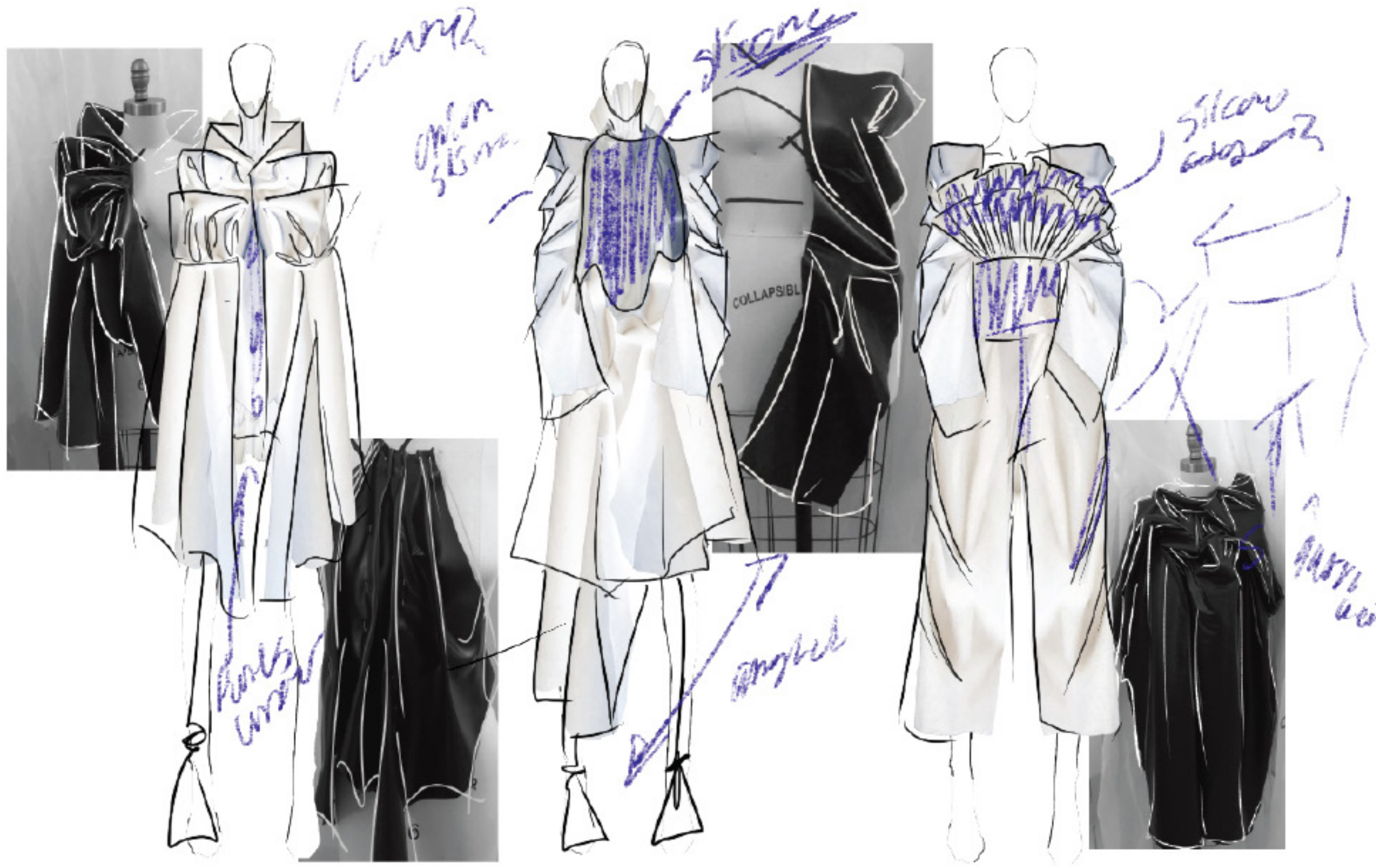


silver
to
the
throat



gradient?

or
stained?



curved
open
slit

slit

silicone
edges

hats
under

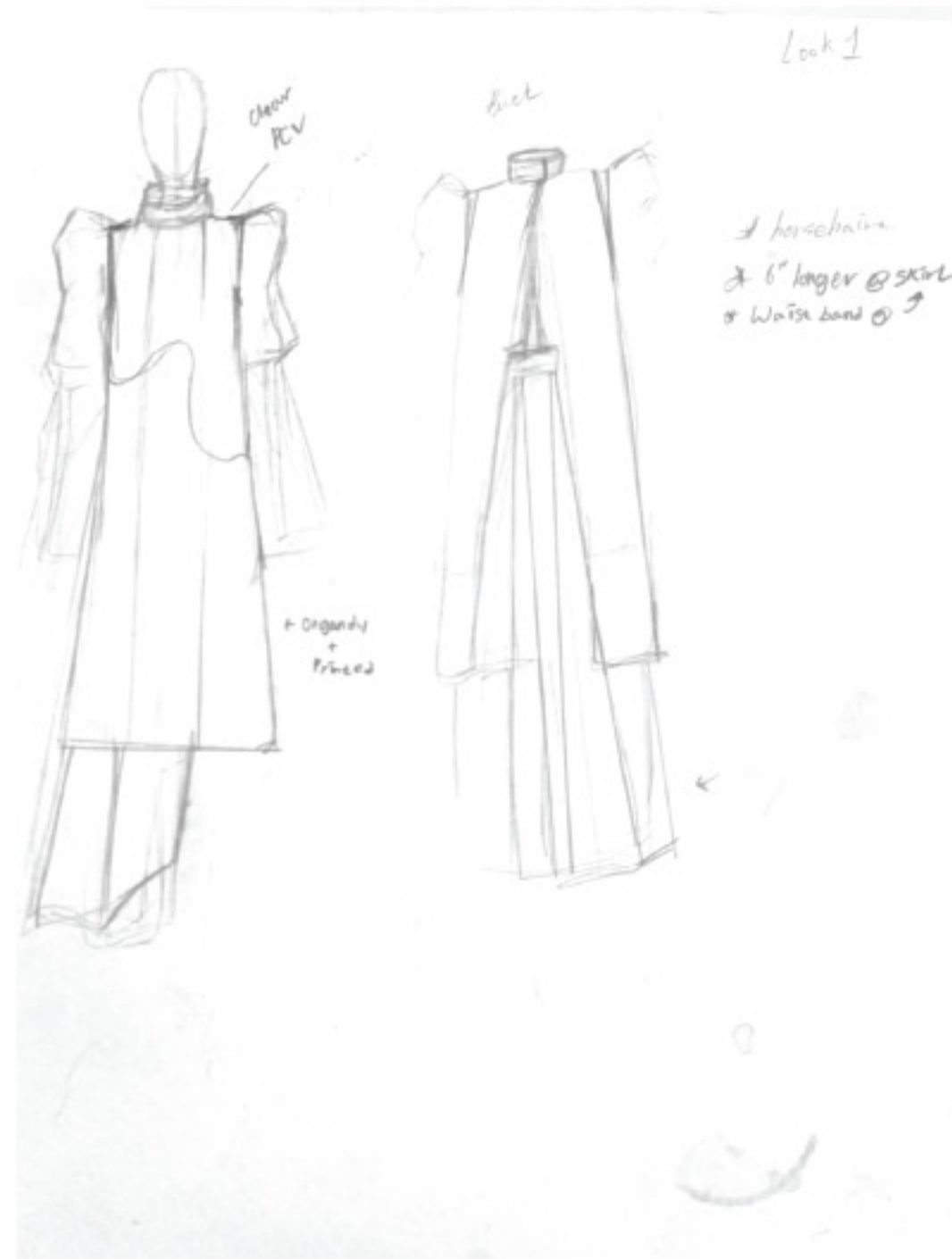
angled

easy
wear



Second, we imagine the judgment of that appearance.

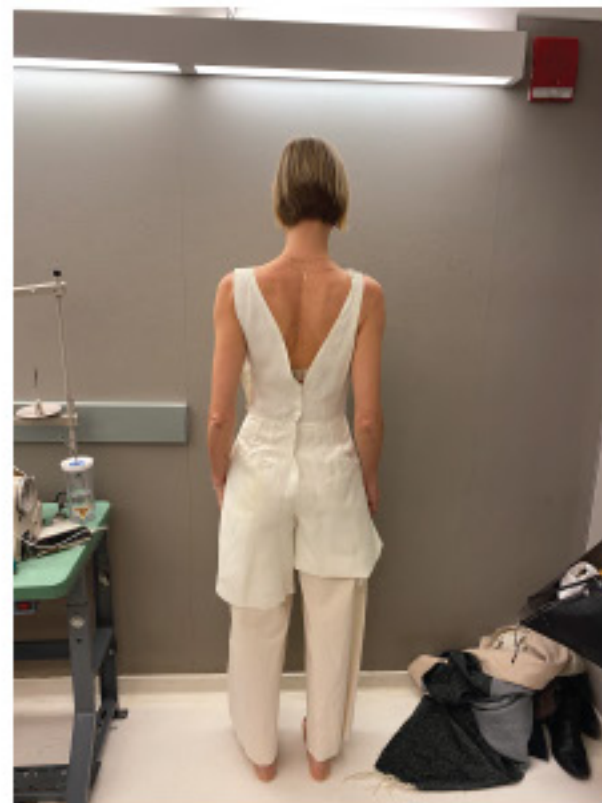
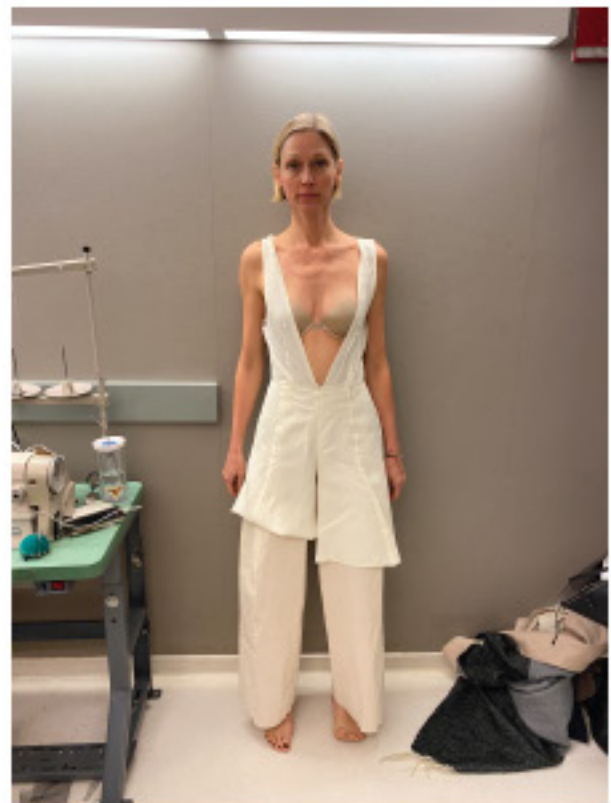
Look 1





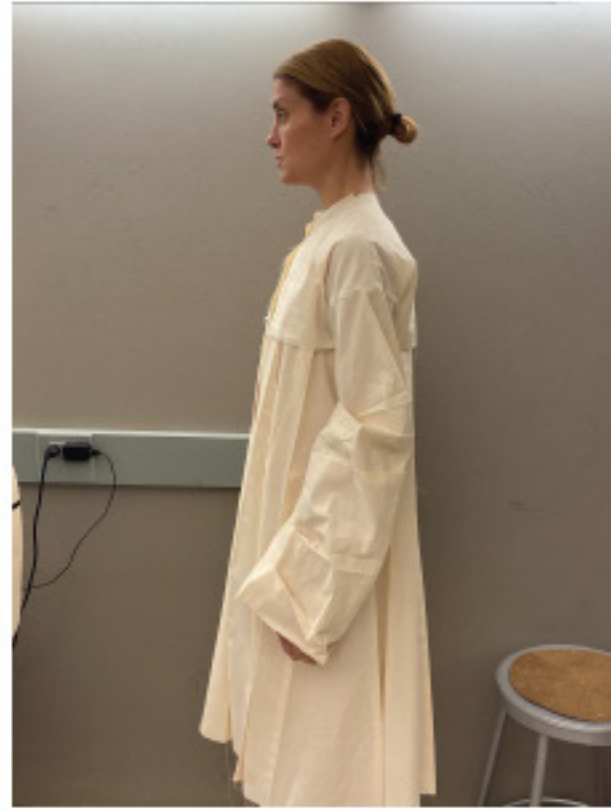
Look 2





Look 3





Look 7



Through the Looking Glass

Muslin Line Up

1

2

3

4

5

6

7



-Satin Back
crepe
-Silk Charmuse
-Onion Skin



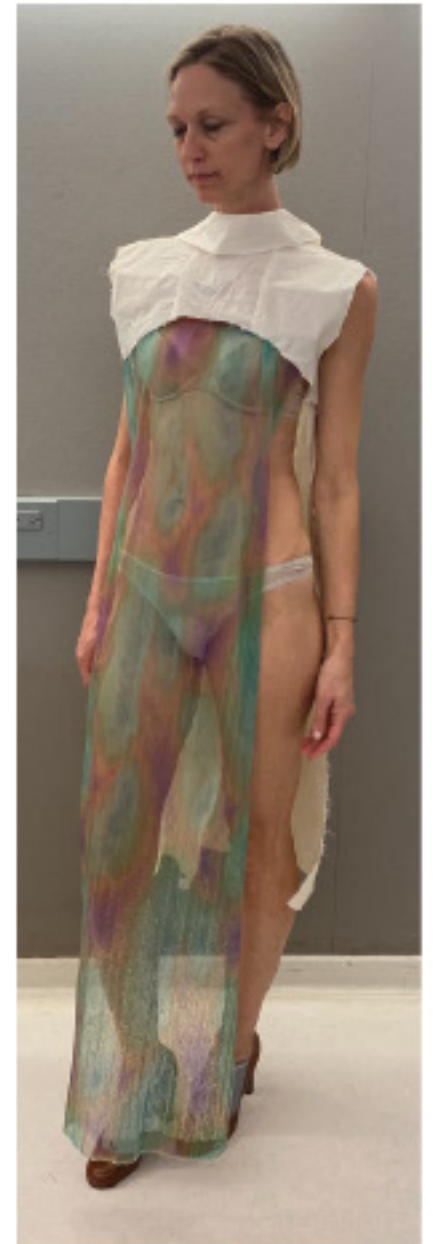
-Crinkled Chiffon
- Wool gabardine



-Silk Charmuse
-Onion Skin
-Poly Organza



-Crinkled Chiffon
- Wool Gabardine
- Poly Micro Back
Light



-Suiting Wool
- Custom Pleat-
ed Tulle



Finally, we develop our self through the judgments of others.





