

Before the virus:



1 billion people fly by plane each year,
30 people were on a plane every second

Tourism

Eco Tourism

Expensive
Sustainable

Mass Tourism

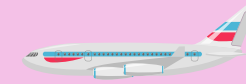
Not Sustainable



National and international arrivals and expenditure



Systems effects of mass tourism



planes

Air Pollution/Emissions



cars

Long-short-lived greenhouse gasses



boats

Air quality and health
Increased carbon footprint



Hotels

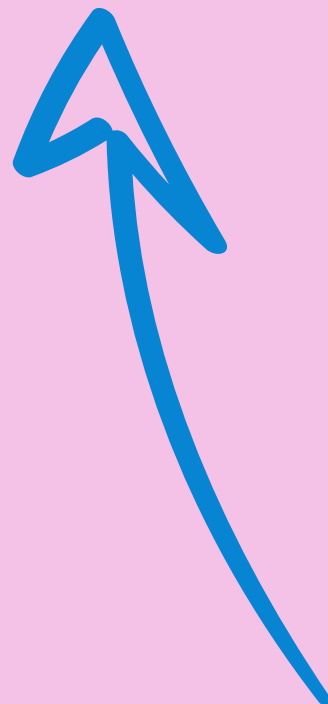
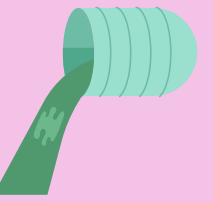
Dishes
plates
utensils



Laundry
towels
sheets
bathrobe

Water Pollution

Chemicals
Dead fishes
Water quality and health



Tourists

Litter/Pollution
Destruction of habitat
Increased traffic



cars



boats

Noise Pollution

