



*Material
Exploration &
Experimentation*



UNBALANCED COTTON SWABS ♻️ ♻️

This swatch is made with cotton swabs and merged with the wire.
Cotton swabs are lying down with an unbalanced pattern which creates rhythm.
The curved shape looks like a fan, but it is high raised and with the wire. Also, this swatch is flexible because the wire wraps the independent cotton swabs, not the whole structure.



COTTON SWAB NET ♻️ ♻️

Adding the cotton swabs swatch series, this is the most solid structure.
This swatch shape reminds me of rat, because of the 10 squares that were joined by the outstretched cotton swabs. It hardly moves and is not easily broken. Also, it is durable.



UPSIDE DOWN COTTON SWABS ♻️ ♻️

This swatch reminds of unique shapes, which is simple, but not boring.
I made two triangles shapes and connected one of them. Also, combined two triangles with the wire. This structure is not that much solid as a cotton swab net. However, it can not refer to a flexible structure.



FAN SHAPE TISSUE ♻️ ♻️

This swatch can be easily made. This position is easy to make because the shape is not really flat. Also, this structure is not complicated. Yes, it is flexible and it is not hard to combine with other swatches.



WORM-LIKE TISSUE ♻️ ♻️

This swatch is similar with fan shape tissue's properties. This swatch is made with 4 squares of folded tissue. The tissue was folded into a half but in an opposite way. Similar with the fan shape tissue, this structure is easily merge with other swatches. Also, this swatch shows the original texture of the tissue itself.



TINY TREE RING TISSUE ♻️ ♻️

This swatch consists of tiny rolled tissues.
Among the tissue swatch series, this swatch is unique high the only. Although, the structure is not strong but it can be made in an aesthetic way.
These tiny pieces could be combined together more to become a solid structure.



CANDY SPONGE ♻️ ♻️

Every sponge has a square. To emphasize the volume, I gathered each section of the sponge, and it became a circular shape. Also, it became denser when more of this piece gathered. It is not flexible but has resilience.



TILE SPONGE ♻️ ♻️

This swatch consists of 5 squares, which is similar down. It is connected with long wire. This structure is simple and flexible, because I just fixed the squares with one connector. However, it is easy to shape and easy to repair.

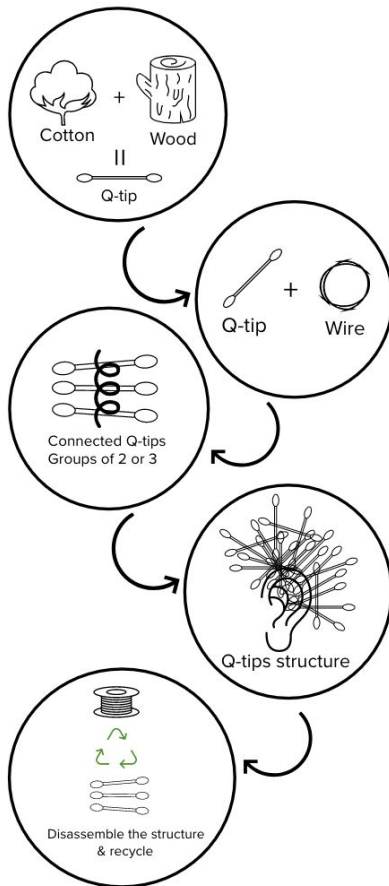


FLOWER SPONGE ♻️ ♻️

This swatch shows a great volume, which is an original proportion of the sponge. The shape itself looks soft, but it has a resistance of the volume range. Therefore, it is not the best option to combine with other pieces.

Material Exploration & Experimentation: Material Swatches

Life Cycle



Q-TIPS EAR-CUFF

STEP

BY

STEP

MERIEL SEO

SPACE & MATERIALITY

EVA PEREZ DE VEGA

PROJECT # 2

• MATERIALS •



Q-TIPS

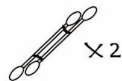


WIRE



MECHANICAL TOOL

• STEP 1: MAKE EAR HOLDER WITH Q-TIPS •



TIE TWO Q-TIPS WITH WIRE
AND MAKE TWO PAIRS OF
Q-TIP STRUCTURE



OVERLAP TWO PAIRS OF
Q-TIPS STRUCTURE AND
TIE TOGETHER WITH WIRE

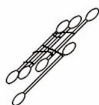


Q-TIPS STRUCTURE
IS FIXED TO THE EAR.

• STEP 2: ADD MORE Q-TIPS TO THE EAR HOLDER •



1



2



3



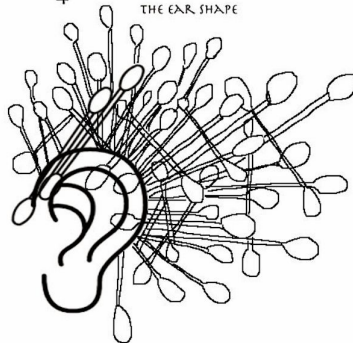
4

MAKE MULTIPLE KINDS OF Q-TIPS
STRUCTURE AND ADD THESE STRUCTURES
TO THE EAR HOLDER.

* ARRANGE THE STRUCTURES WITH
BALANCE THAT CAN ADEQUETLY FIT INTO
THE EAR SHAPE

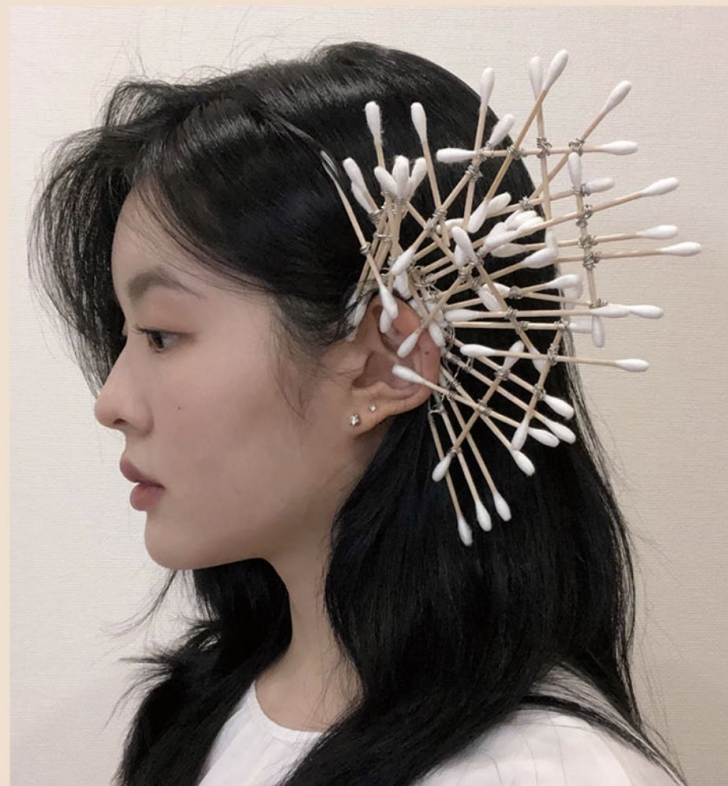
• STEP 3: FINAL STRUCTURE •

ASSEMBLE THE
Q-TIPS STRUCTURE
&
FINALIZE
THE EAR-CUFF



Q-TIPS EAR-CUFF

FINAL PRODUCT



MERIEL SEO

SPACE & MATERIALITY

EVA PEREZ DE VEGA

PROJECT # 2